



# KENAI PENINSULA BOROUGH

Capital Projects Department

47140 East Poppy Lane • Soldotna, Alaska 99669

Toll-free within the Borough: 1-800-478-4441

PHONE: (907) 262-9657 • FAX: (907) 262-6090

www.borough.kenai.ak.us

MIKE NAVARRE  
BOROUGH MAYOR

## MEMORANDUM

**TO:** Gary Knopp, Assembly President  
Members, Kenai Peninsula Borough Assembly

**THRU:** Mike Navarre, Borough Mayor *MN*

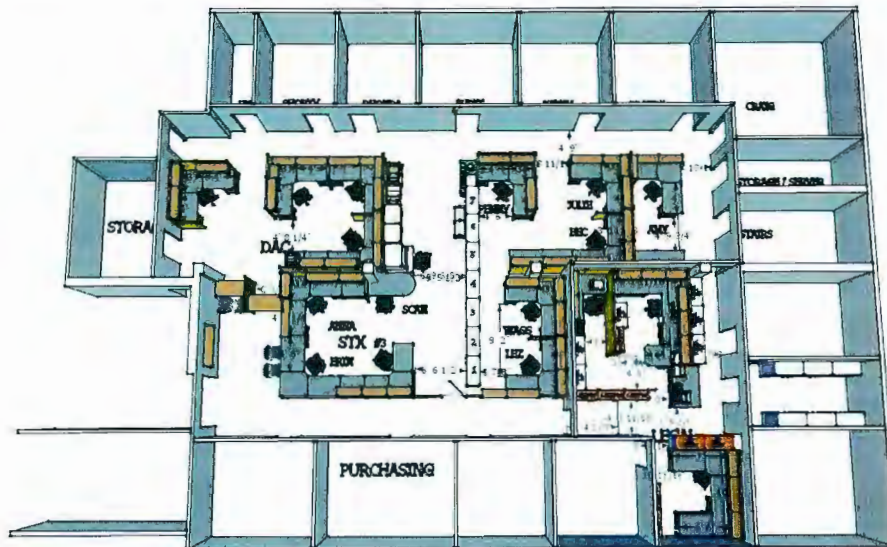
**FROM:** Kevin Lyon, Capital Projects Director *KL*

**DATE:** April 18, 2012

**SUBJECT:** Ordinance 2011-19-34 – Additional Information requested by Assembly

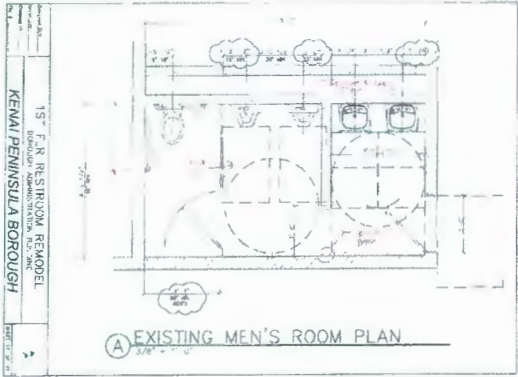
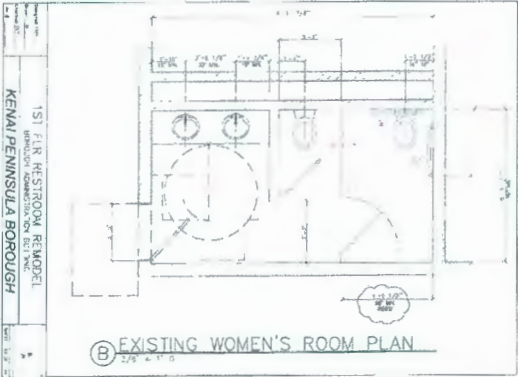
This memo is to provide additional information on the Scope of the remodel for the finance and legal department and identifies the scope of the ADA upgrades for the Borough Administration Building.

The finance and legal remodel consist of reconfiguration of the central area including wall relocations, and new: high density storage, network, electrical, new cubicles. Paint and carpet will be replaced in the entire departments. An overview of the improvements can be seen below in the attached sketch. Only the Finance and Legal Departments are impacted, as Purchasing has been recently remodeled.



The budget consists of approximately \$80,000 in fixtures and furnishings, \$22,000 in high density storage and the remainder in building construction.

The proposed ADA upgrades begin to address the 2010 ADA Standards that took effect March 15, 2012. The Standards require that if existing spaces are altered, the accessible route to and including the restrooms, telephones and drinking fountains for areas containing a primary function to be altered for use by individuals with disabilities or at least 20% of the project must be allocated to meeting these standards. Below are existing conditions.



In the past some alterations were made to the Public Restrooms for the Assembly Chambers, these alterations never met the 1991 ADA requirements and therefore do not meet exemption clause of the 2010 ADA Standard. To meet the standards these rooms will require substantial modification including relocation of in wall piping (block wall) to achieve required clearances. Due to the destructive nature of the required remodel, the budget includes new finishes and partitions. Below are sketches of the proposed modifications.

