

# Homer Construction Permitting

Homer 3rd Quarter Permit VALUES by Type - 1998-2004 - in \$								
	1998	1999	2000	2001	2002	2003	2004	Annual Change
Residential New	620,000	740,000	1,025,000	1,161,680	1,466,300	2,106,275	1,225,600	-41.8%
Residential Alter/Add	254,200	199,000	109,560	122,720	217,940	285,000	851,300	198.7%
Commercial New	41,019	4,800,000	805,000	340,000	3,912,740	628,800	6,225,000	890.0%
Commercial Alter/Add	175,000	6,000	207,410	1,371,950	180,350	0	1,230,000	NA
Total	1,090,219	5,745,000	2,146,970	2,996,350	5,777,330	3,020,075	9,531,900	215.6%
Annual Change		427.0%	-62.6%	39.6%	92.8%	-47.7%	215.6%	

Table 2.9

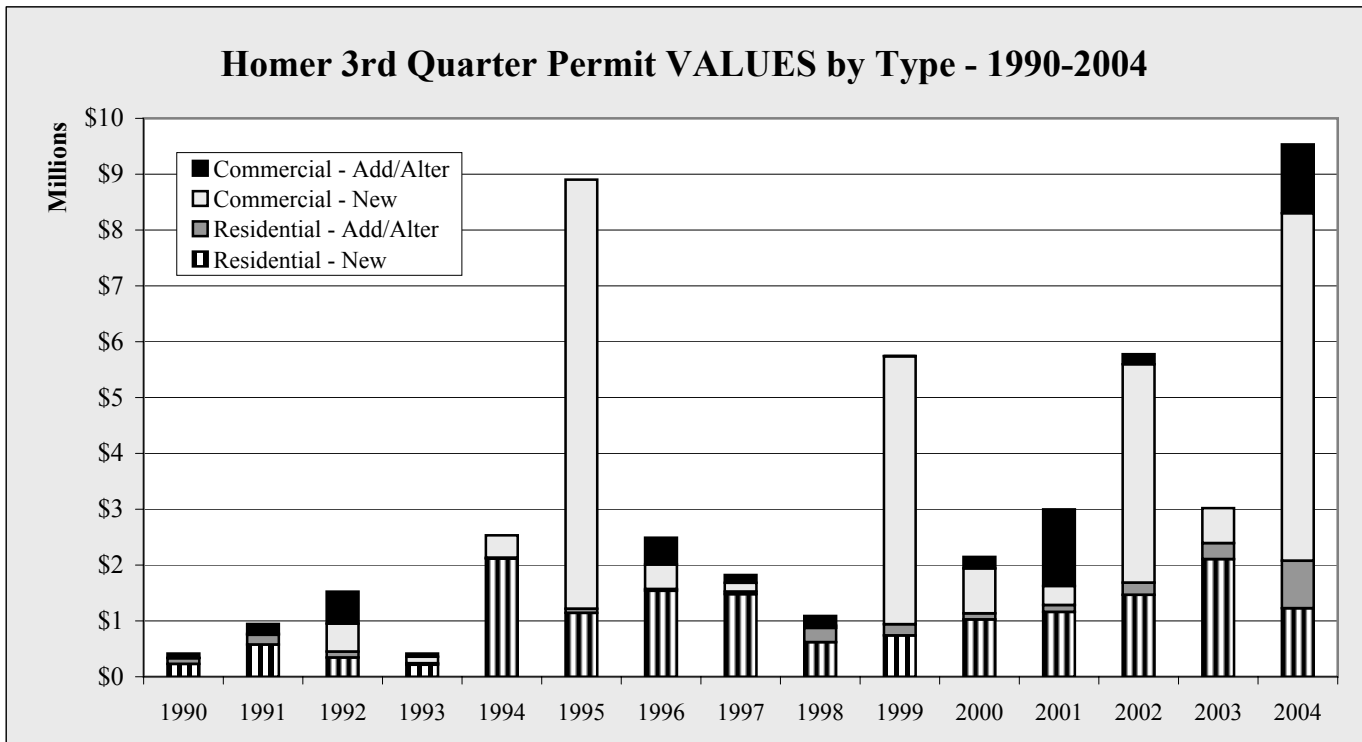


Chart 2.13

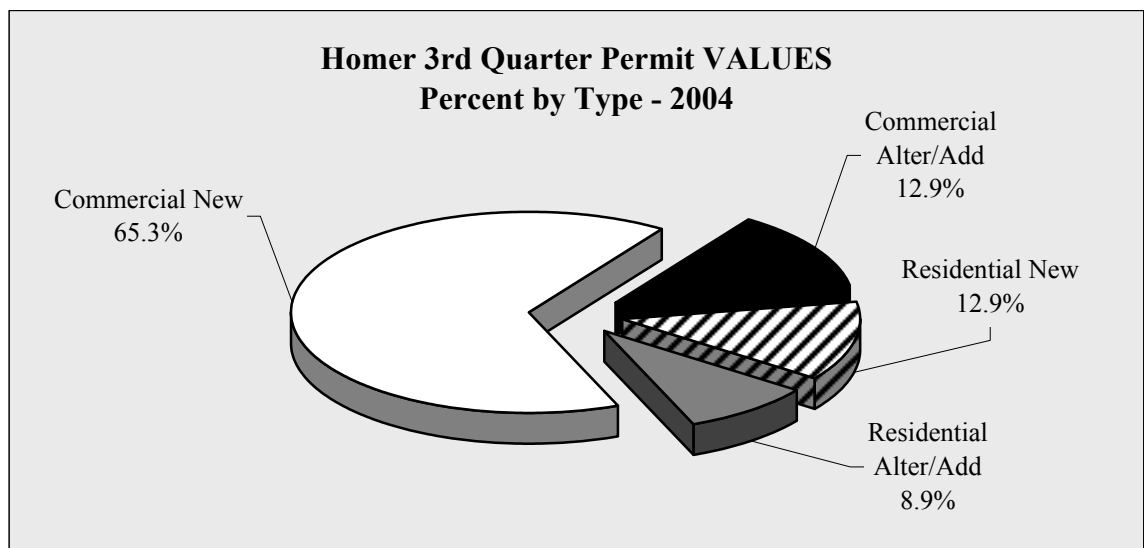


Chart 2.14

# Homer Construction Permitting

Homer 3rd Quarter Permit VOLUME by Type - 1998-2004								
	1998	1999	2000	2001	2002	2003	2004	Annual Change
Residential New	6	6	8	9	10	15	9	-40.0%
Residential Alter/Add	5	11	5	4	8	3	21	600.0%
Commercial New	2	2	2	2	6	3	4	33.3%
Commercial Alter/Add	1	1	6	7	3	0	8	NA
Total	14	20	21	22	27	21	42	100.0%
Annual Change		42.9%	5.0%	4.8%	22.7%	-22.2%	100.0%	

Table 2.10

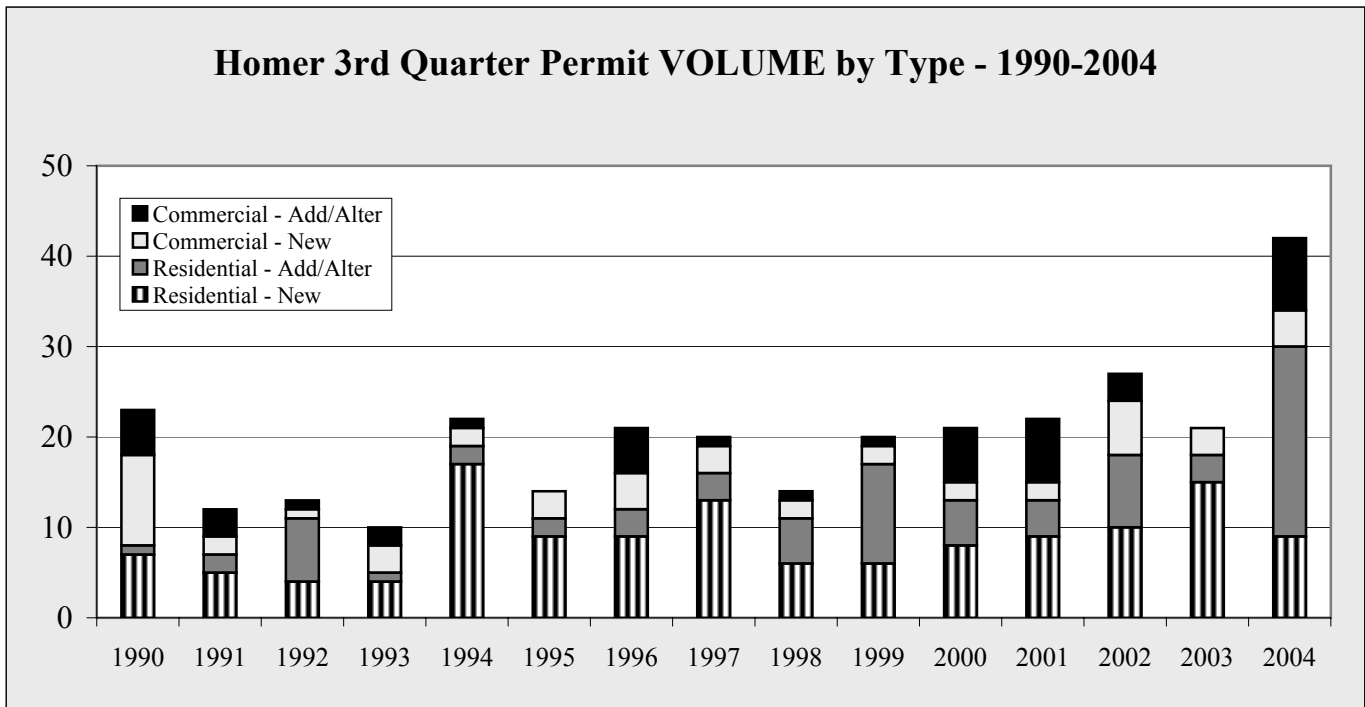


Chart 2.15

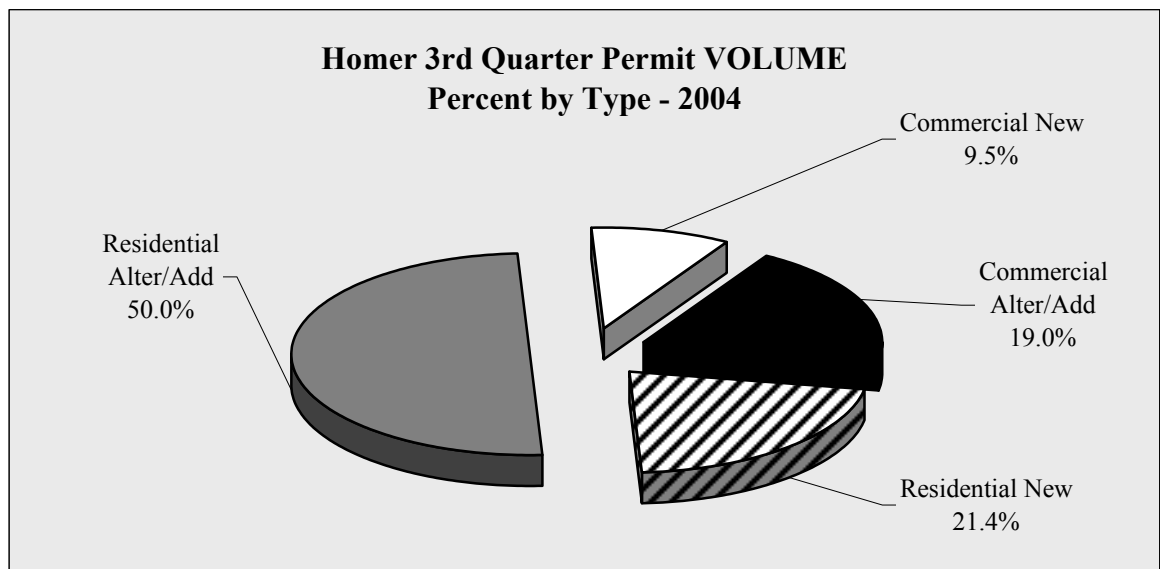


Chart 2.16

# Homer Construction Permitting

Homer YTD 9/30 Permit VALUES by Type - 1998-2004 - in \$								
	1998	1999	2000	2001	2002	2003	2004	Annual Change
Residential New	2,089,000	3,451,000	2,285,040	3,555,480	3,666,520	6,897,555	6,318,500	-8.4%
Residential Alter/Add	394,600	317,000	230,060	489,160	432,300	756,600	1,258,550	66.3%
Commercial New	1,269,025	6,590,000	1,615,480	2,110,800	4,912,740	4,164,520	11,840,518	184.3%
Commercial Alter/Add	241,500	21,000	2,080,410	1,632,950	222,699	465,240	1,262,063	171.3%
Total	3,994,125	10,379,000	6,210,990	7,788,390	9,234,259	12,283,915	20,679,631	68.3%
Annual Change		159.9%	-40.2%	25.4%	18.6%	33.0%	68.3%	

Table 2.11

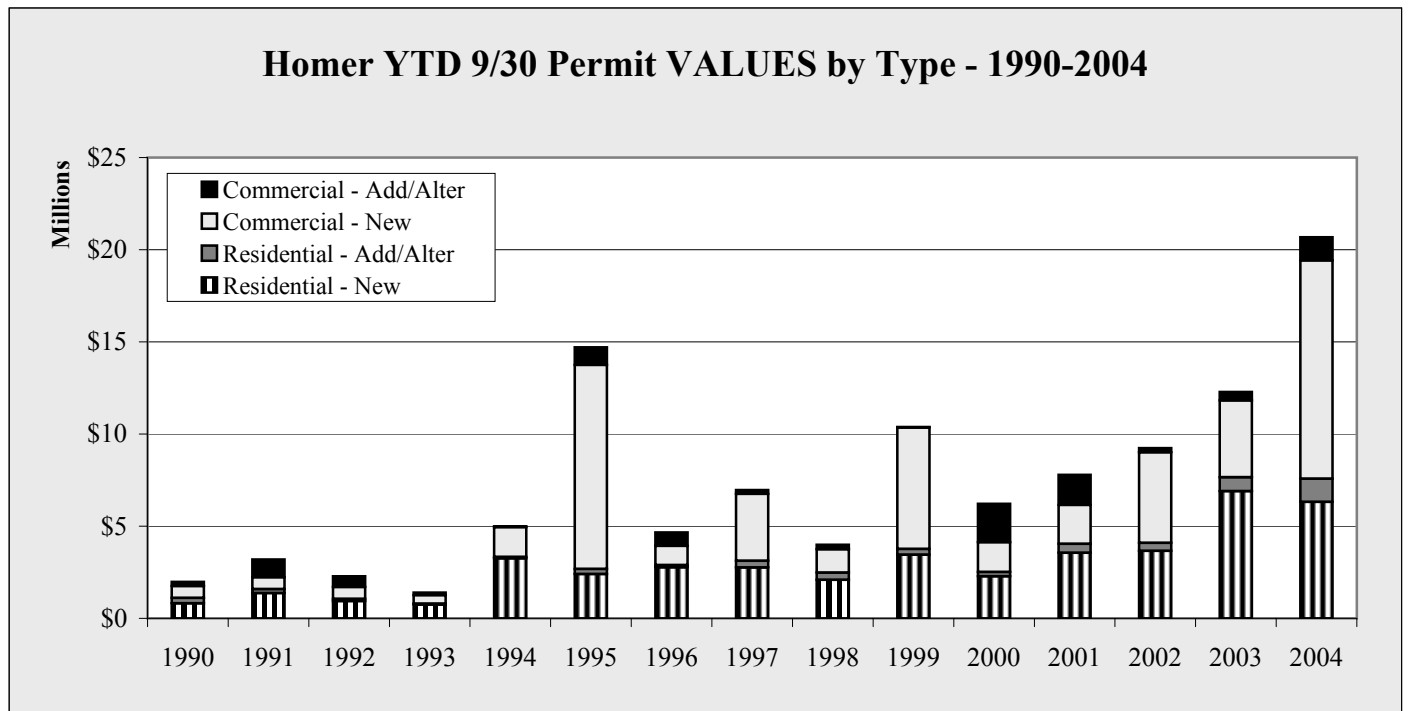


Chart 2.17

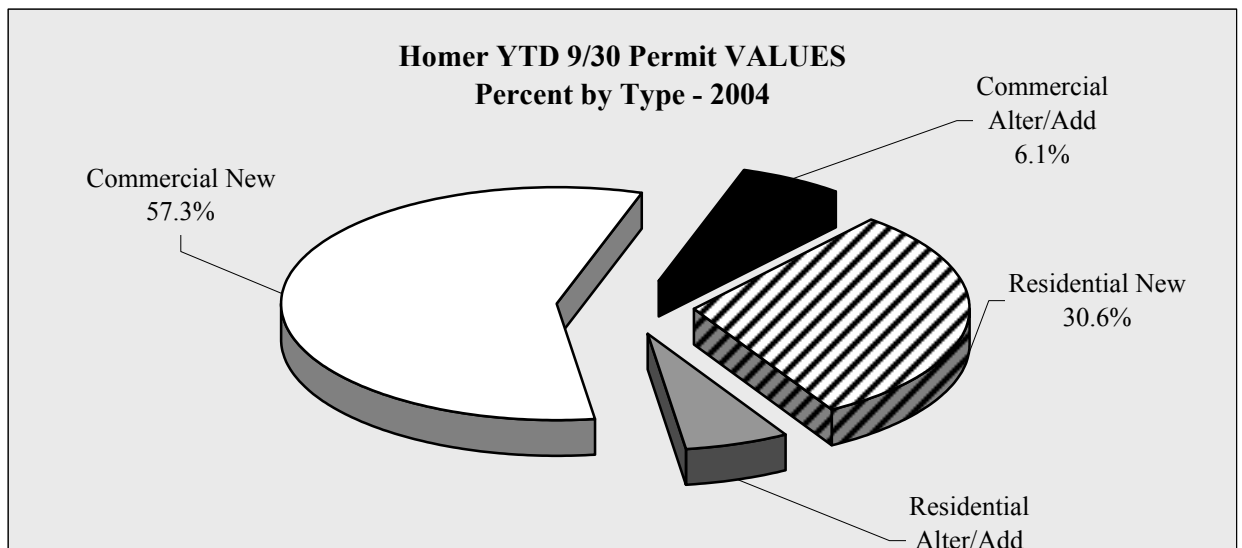


Chart 2.18

# Homer Construction Permitting

**Homer YTD 9/30 Permit VOLUME by Type - 1998-2004**

	1998	1999	2000	2001	2002	2003	2004	Annual Change
Residential New	17	18	19	26	27	38	35	-7.9%
Residential Alter/Add	9	15	8	17	14	17	28	64.7%
Commercial New	8	11	6	7	7	10	10	0.0%
Commercial Alter/Add	4	2	17	13	6	8	10	25.0%
Total	38	46	50	63	54	73	83	13.7%
Annual Change		21.1%	8.7%	26.0%	-14.3%	35.2%	13.7%	

Table 2.12

**Homer YTD 9/30 Permit VOLUME by Type - 1990-2004**

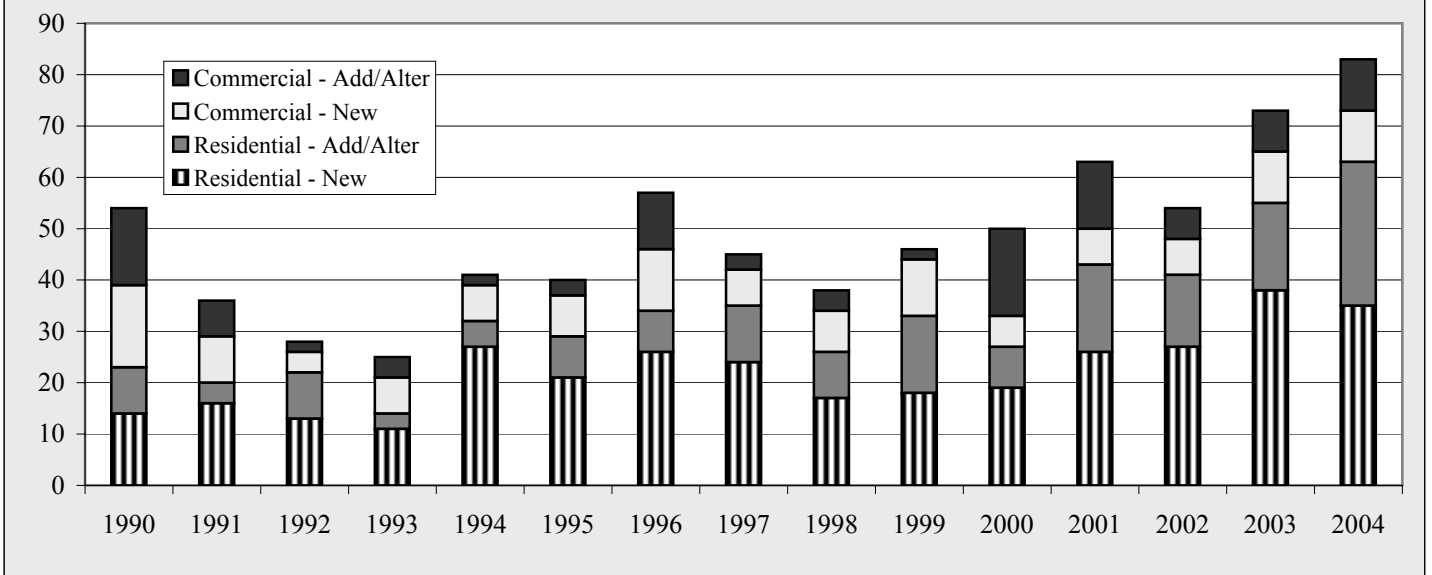


Chart 2.19

**Homer YTD 9/30 Permit VOLUME  
Percent by Type - 2004**

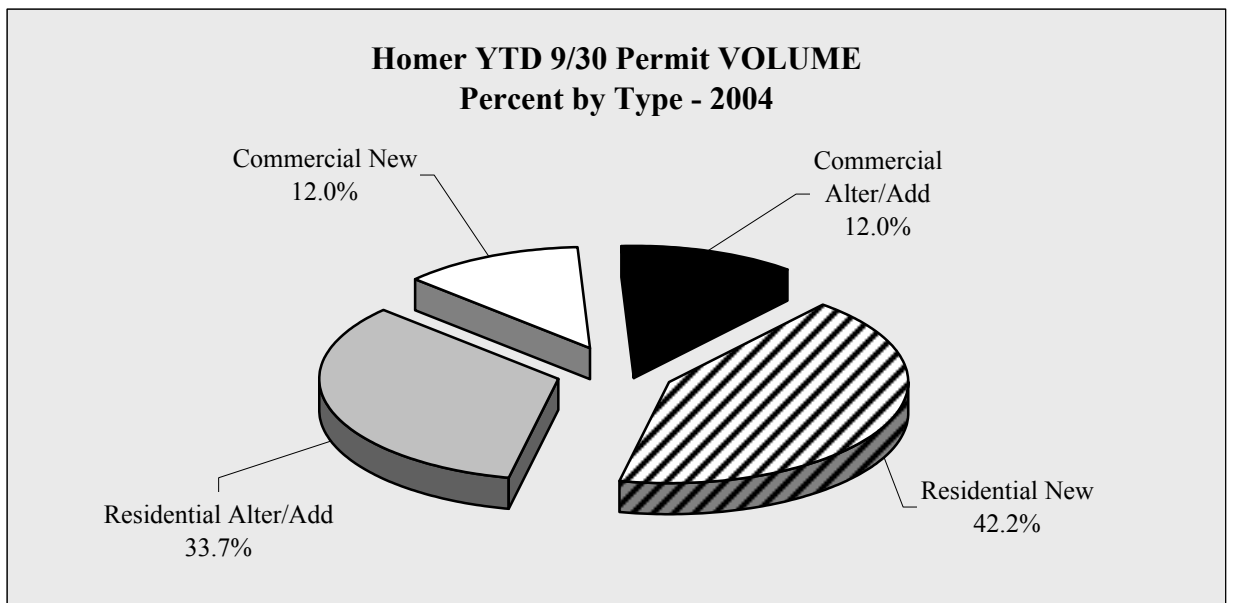


Chart 2.20

# Homer Construction Permitting

<b>Homer Annual Permit VALUES by Type by Quarter - 1997-2004 - in \$</b>					
	1st Quarter	2nd Quarter	3rd Quarter	4th Quarter	Total
<b>1997</b>					
Residential - New	435,000	842,500	1,478,900	480,000	3,236,400
Residential - Add/Alter	0	324,500	44,365	150,000	518,865
Commercial - New	2,150,000	1,321,000	159,000	0	3,630,000
Commercial - Add/Alter	45,000	20,000	139,000	100,000	304,000
<b>TOTAL</b>	<b>2,630,000</b>	<b>2,508,000</b>	<b>1,821,265</b>	<b>730,000</b>	<b>7,689,265</b>
<b>1998</b>					
Residential - New	594,000	875,000	620,000	761,750	2,850,750
Residential - Add/Alter	0	140,400	254,200	145,000	539,600
Commercial - New	35,970	1,192,036	41,019	1,259,000	2,528,025
Commercial - Add/Alter	0	66,500	175,000	40,000	281,500
<b>TOTAL</b>	<b>629,970</b>	<b>2,273,936</b>	<b>1,090,219</b>	<b>2,205,750</b>	<b>6,199,875</b>
<b>1999</b>					
Residential - New	1,673,000	1,038,000	740,000	195,000	3,646,000
Residential - Add/Alter	0	118,000	199,000	50,000	367,000
Commercial - New	270,000	1,520,000	4,800,000	316,000	6,906,000
Commercial - Add/Alter	0	15,000	6,000	0	21,000
<b>TOTAL</b>	<b>1,943,000</b>	<b>2,691,000</b>	<b>5,745,000</b>	<b>561,000</b>	<b>10,940,000</b>
<b>2000</b>					
Residential - New	392,600	867,440	1,025,000	326,000	2,611,040
Residential - Add/Alter	5,500	115,000	109,560	0	230,060
Commercial - New	85,000	725,480	805,000	48,000	1,663,480
Commercial - Add/Alter	1,315,000	558,000	207,410	543,982	2,624,392
<b>TOTAL</b>	<b>1,798,100</b>	<b>2,265,920</b>	<b>2,146,970</b>	<b>917,982</b>	<b>7,128,972</b>
<b>2001</b>					
Residential - New	300,000	2,093,800	1,161,680	492,300	4,047,780
Residential - Add/Alter	60,000	306,440	122,720	120,000	609,160
Commercial - New	285,000	1,485,800	340,000	300,000	2,410,800
Commercial - Add/Alter	45,000	216,000	1,371,950	11,100,000	12,732,950
<b>TOTAL</b>	<b>690,000</b>	<b>4,102,040</b>	<b>2,996,350</b>	<b>12,012,300</b>	<b>19,800,690</b>
<b>2002</b>					
Residential - New	891,760	1,308,460	1,466,300	560,200	4,226,720
Residential - Add/Alter	8,960	205,400	217,940	104,320	536,620
Commercial - New	0	1,000,000	3,912,740	78,000	4,990,740
Commercial - Add/Alter	28,000	14,349	180,350	72,000	294,699
<b>TOTAL</b>	<b>928,720</b>	<b>2,528,209</b>	<b>5,777,330</b>	<b>814,520</b>	<b>10,048,779</b>
<b>2003</b>					
Residential - New	979,800	3,811,480	2,106,275	1,222,900	8,120,455
Residential - Add/Alter	232,540	239,060	285,000	50,000	806,600
Commercial - New	0	3,535,720	628,800	1,600,000	5,764,520
Commercial - Add/Alter	122,000	343,240	0	170,000	635,240
<b>TOTAL</b>	<b>1,334,340</b>	<b>7,929,500</b>	<b>3,020,075</b>	<b>3,042,900</b>	<b>15,326,815</b>
<b>2004</b>					
Residential - New	2,597,500	2,495,400	1,225,600		6,318,500
Residential - Add/Alter	201,520	205,730	851,300		1,258,550
Commercial - New	915,000	4,700,518	6,225,000		11,840,518
Commercial - Add/Alter	0	32,063	1,230,000		1,262,063
<b>TOTAL</b>	<b>3,714,020</b>	<b>7,433,711</b>	<b>9,531,900</b>		<b>20,679,631</b>
					<b>Year to Date</b>

Table 2.13

# Homer Construction Permitting

<b>Homer Annual Permit VOLUME by Type by Quarter - 1997-2004</b>					
	1st Quarter	2nd Quarter	3rd Quarter	4th Quarter	Total
<b>1997</b>					
Residential - New	3	8	13	4	28
Residential - Add/Alter	0	8	3	4	15
Commercial - New	2	2	3	1	8
Commercial - Add/Alter	1	1	1	1	4
<b>TOTAL</b>	<b>6</b>	<b>19</b>	<b>20</b>	<b>10</b>	<b>55</b>
<b>1998</b>					
Residential - New	5	6	6	6	23
Residential - Add/Alter	0	4	5	2	11
Commercial - New	1	5	2	1	9
Commercial - Add/Alter	0	3	1	1	5
<b>TOTAL</b>	<b>6</b>	<b>18</b>	<b>14</b>	<b>10</b>	<b>48</b>
<b>1999</b>					
Residential - New	3	9	6	3	21
Residential - Add/Alter	0	4	11	2	17
Commercial - New	2	7	2	1	12
Commercial - Add/Alter	0	1	1	0	2
<b>TOTAL</b>	<b>5</b>	<b>21</b>	<b>20</b>	<b>6</b>	<b>52</b>
<b>2000</b>					
Residential - New	4	7	8	4	23
Residential - Add/Alter	1	2	5	0	8
Commercial - New	1	3	2	2	8
Commercial - Add/Alter	3	8	6	2	19
<b>TOTAL</b>	<b>9</b>	<b>20</b>	<b>21</b>	<b>8</b>	<b>58</b>
<b>2001</b>					
Residential - New	3	14	9	4	30
Residential - Add/Alter	1	12	4	2	19
Commercial - New	2	3	2	1	8
Commercial - Add/Alter	1	5	7	2	15
<b>TOTAL</b>	<b>7</b>	<b>34</b>	<b>22</b>	<b>9</b>	<b>72</b>
<b>2002</b>					
Residential - New	8	9	10	5	32
Residential - Add/Alter	1	5	8	6	20
Commercial - New	0	1	6	1	8
Commercial - Add/Alter	1	2	3	1	7
<b>TOTAL</b>	<b>10</b>	<b>17</b>	<b>27</b>	<b>13</b>	<b>67</b>
<b>2003</b>					
Residential - New	6	17	15	9	47
Residential - Add/Alter	8	6	3	2	19
Commercial - New	0	7	3	1	11
Commercial - Add/Alter	4	4	0	1	9
<b>TOTAL</b>	<b>18</b>	<b>34</b>	<b>21</b>	<b>13</b>	<b>86</b>
<b>2004</b>					<b>Year to Date</b>
Residential - New	11	15	9		35
Residential - Add/Alter	2	5	21		28
Commercial - New	2	4	4		10
Commercial - Add/Alter	1	1	8		10
<b>TOTAL</b>	<b>16</b>	<b>25</b>	<b>42</b>		<b>83</b>

Table 2.14