

KPB Employment

Employment data are acquired from the Alaska Department of Labor and Workforce Development (AK DOLWD) as reported by administrative personnel of each business. When administrative headquarters of a business is located in a specific area, all employees of that business are reported as being employed in that area, resulting in skewed employment data.

Government employees include federal, state, borough and local government as well as public school and state university employees. Employees of both Central Peninsula General Hospital in Soldotna and South Peninsula General Hospital in Homer are included in government data because they are managed by the KPB.

The AK DOLWD updates employment data regularly as information trickles in and adjustments are made. Data varies in quarterly reports as corrected reports are received or delinquent reports are filed and included in totals. Self-employed workers, fishers, domestics and unpaid family workers are excluded from these figures due to exemption from certain reporting requirements.

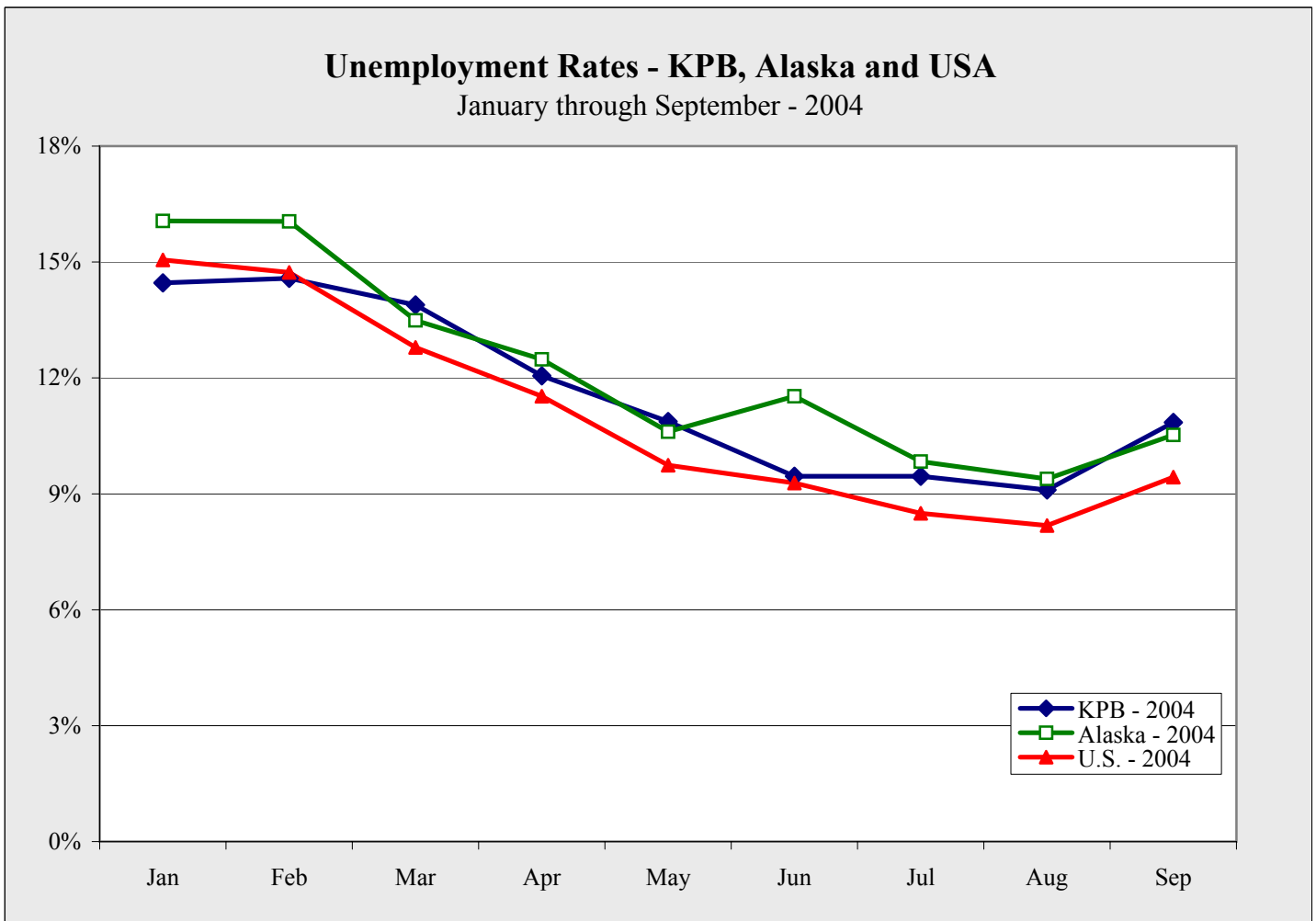


Chart 1.43

KPB Employment

KPB Labor Force by Month - 2002-2004

	Jan	Feb	Mar	Apr	May	Jun	Jul	Aug	Sep	Oct	Nov	Dec	Avg
2002	20,596	20,969	21,108	21,305	21,893	22,863	24,201	23,601	22,099	20,554	21,261	20,446	21,741
2003	21,352	21,664	21,497	21,572	22,197	21,986	25,029	24,314	22,432	21,628	20,935	20,637	22,104
2004	21,684	22,018	21,837	21,986	22,687	24,535	25,501	24,867	22,823				

Table 1.53

KPB Comparative Labor Force by Month - YTD 2002, 2003, 2004

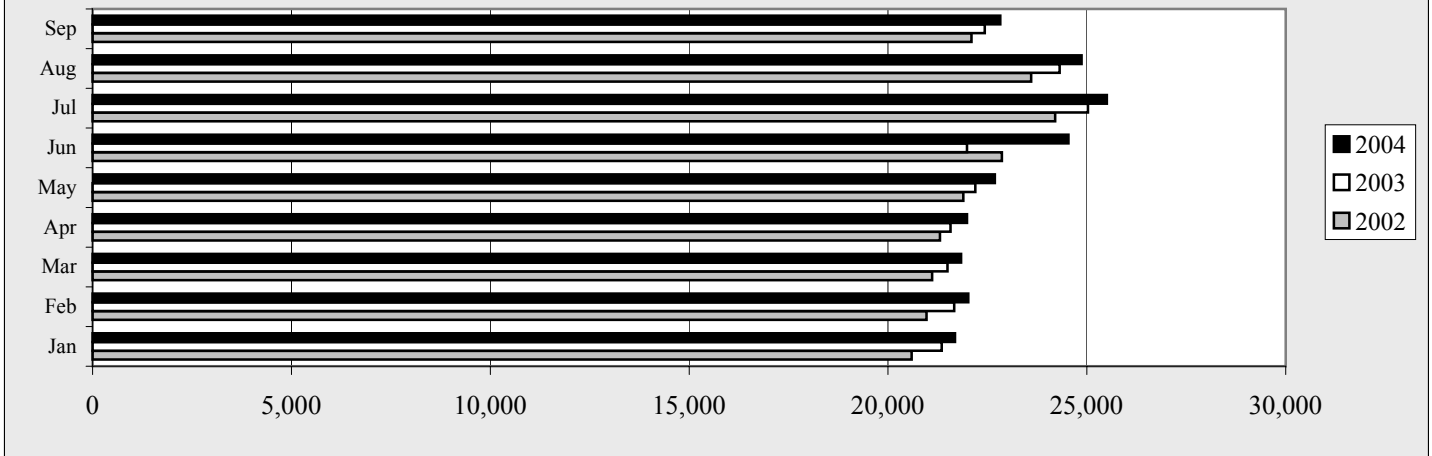


Chart 1.44

KPB Unemployment by Month - 2002-2004

	Jan	Feb	Mar	Apr	May	Jun	Jul	Aug	Sep	Oct	Nov	Dec	Avg
2002	2,978	3,057	2,932	2,568	2,380	2,162	2,288	2,148	2,397	2,735	2,614	3,001	2,605
2003	3,430	3,477	2,900	2,692	2,355	2,534	2,462	2,282	2,361	2,482	2,472	2,858	2,692
2004	3,264	3,243	2,793	2,534	2,210	2,277	2,166	2,034	2,160				

Table 1.54

KPB Comparative Unemployment by Month - YTD 2002, 2003, 2004

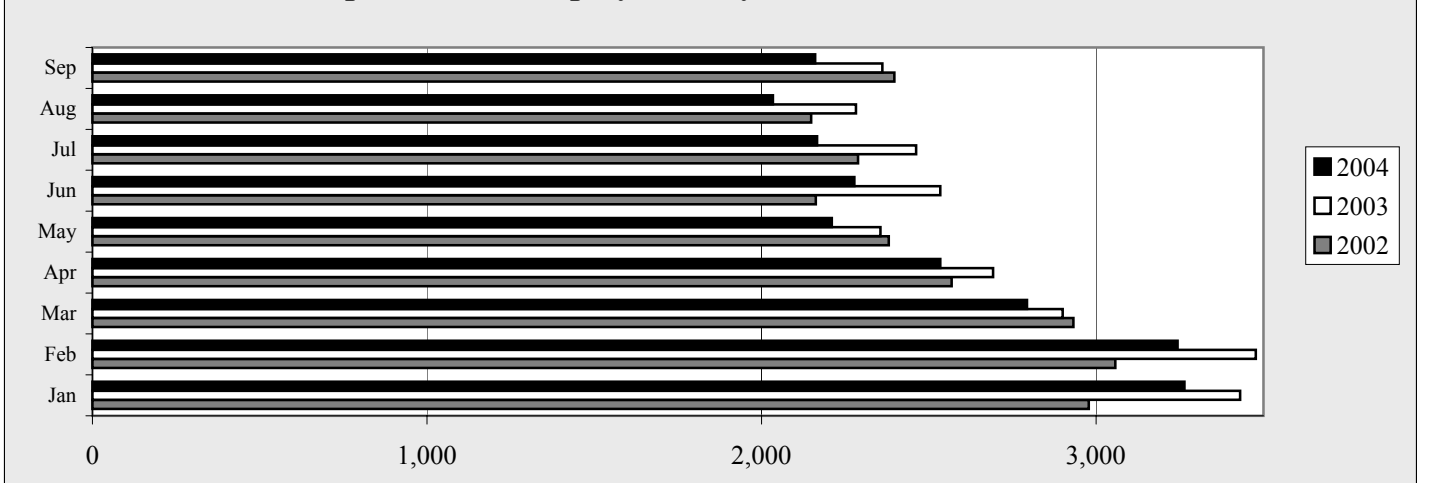


Chart 1.45

KPB Employment

Unemployment Rates by Month - 2002-2004

	<u>Jan</u>	<u>Feb</u>	<u>Mar</u>	<u>Apr</u>	<u>May</u>	<u>Jun</u>	<u>Jul</u>	<u>Aug</u>	<u>Sep</u>	<u>Oct</u>	<u>Nov</u>	<u>Dec</u>	<u>Avg</u>
2002	14.5%	14.6%	13.9%	12.1%	10.9%	9.5%	9.5%	9.1%	10.8%	13.3%	12.3%	14.7%	12.0%
2003	16.1%	16.0%	13.5%	12.5%	10.6%	11.5%	9.8%	9.4%	10.5%	11.5%	11.8%	13.8%	12.2%
2004	15.1%	14.7%	12.8%	11.5%	9.7%	9.3%	8.5%	8.2%	9.5%				

Table 1.55

KPB Comparative Unemployment Rates - 2002, 2003, 2004

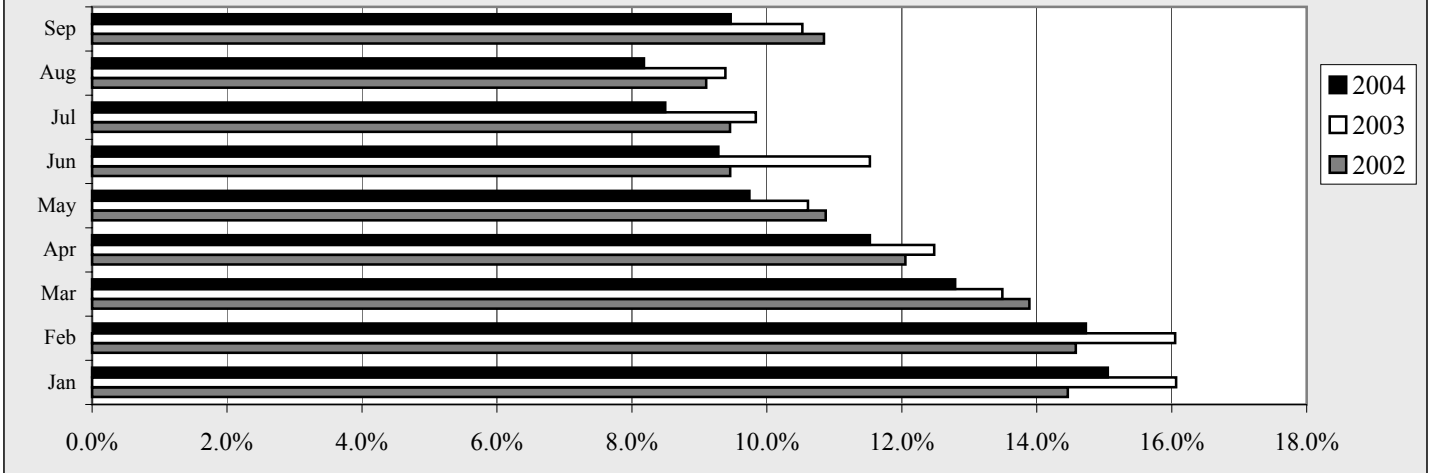


Chart 1.46

Employment by Month - 2002-2004

	<u>Jan</u>	<u>Feb</u>	<u>Mar</u>	<u>Apr</u>	<u>May</u>	<u>Jun</u>	<u>Jul</u>	<u>Aug</u>	<u>Sep</u>	<u>Oct</u>	<u>Nov</u>	<u>Dec</u>	<u>Avg</u>
2002	17,618	17,912	18,176	18,737	19,513	20,701	21,913	21,453	19,702	17,819	18,647	17,445	19,136
2003	17,922	18,187	18,597	18,880	19,842	19,452	22,567	22,032	20,071	19,146	18,463	17,779	19,412
2004	18,420	18,775	19,044	19,452	20,477	22,258	23,335	22,833	20,663				

Table 1.56

KPB Comparative Employment by Month - 2002, 2003, 2004

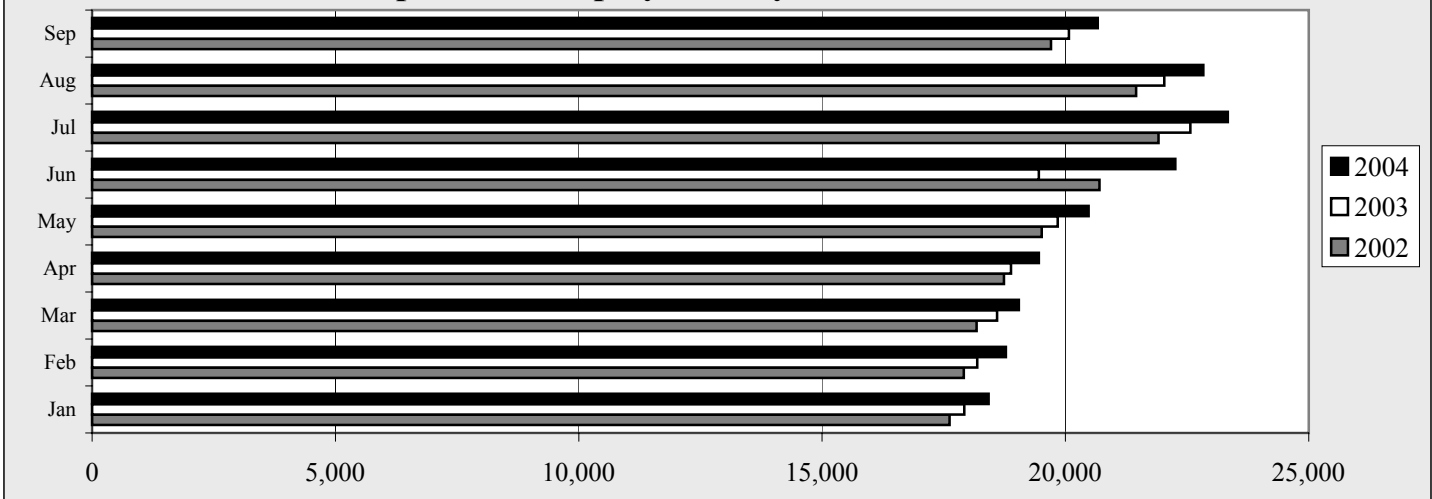


Chart 1.47