

Homer Sales

Homer 1st Quarter Gross Sales by Industry - 1999-2005 - in \$

	1999	2000	2001	2002	2003	2004	2005	Annual Change
AFF	94,065	174,500	160,466	134,712	249,333	229,352	264,446	15.3%
Min	195	0	9,137	1,363	0	256	0	NA
Const	6,011,769	7,295,167	8,123,440	8,430,924	9,795,523	4,325,965	4,253,028	-1.7%
Manu	3,510,592	1,753,833	1,325,393	1,253,834	1,317,636	1,116,143	725,931	-35.0%
TCPU	8,313,407	7,762,978	8,393,207	9,784,288	9,460,657	9,977,448	10,868,207	8.9%
Whole	4,137,168	3,177,603	3,500,654	3,358,010	4,044,595	4,122,172	3,928,233	-4.7%
Retail	11,284,262	12,205,397	12,926,124	13,767,872	17,108,705	18,227,417	19,595,441	7.5%
FIRE	1,957,019	1,447,561	1,405,203	1,527,725	1,989,925	2,247,358	1,996,686	-11.2%
Service	4,245,171	4,638,128	5,001,354	6,006,218	7,261,902	7,895,860	8,120,660	2.8%
Govt	0	0	0	0	0	394	0	-100.0%
Total	39,553,648	38,455,167	40,844,978	44,264,946	51,228,276	48,142,365	49,752,632	3.3%
Annual Change		-2.8%	6.2%	8.4%	15.7%	-6.0%	3.3%	

Table 2.1

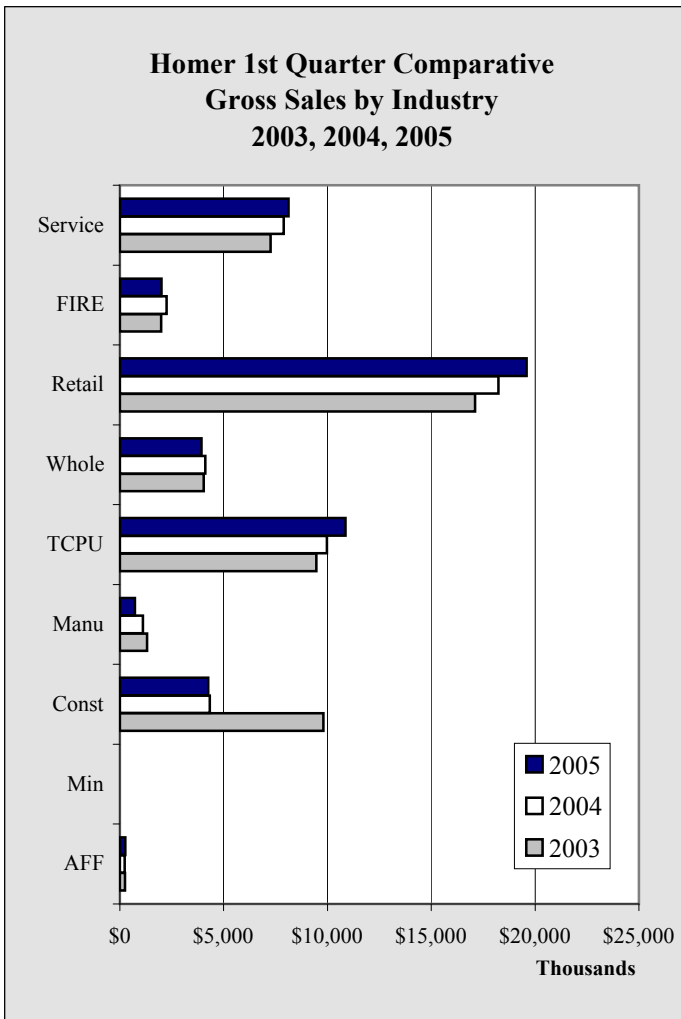


Chart 2.1

Homer's annexation became effective 4/1/2002

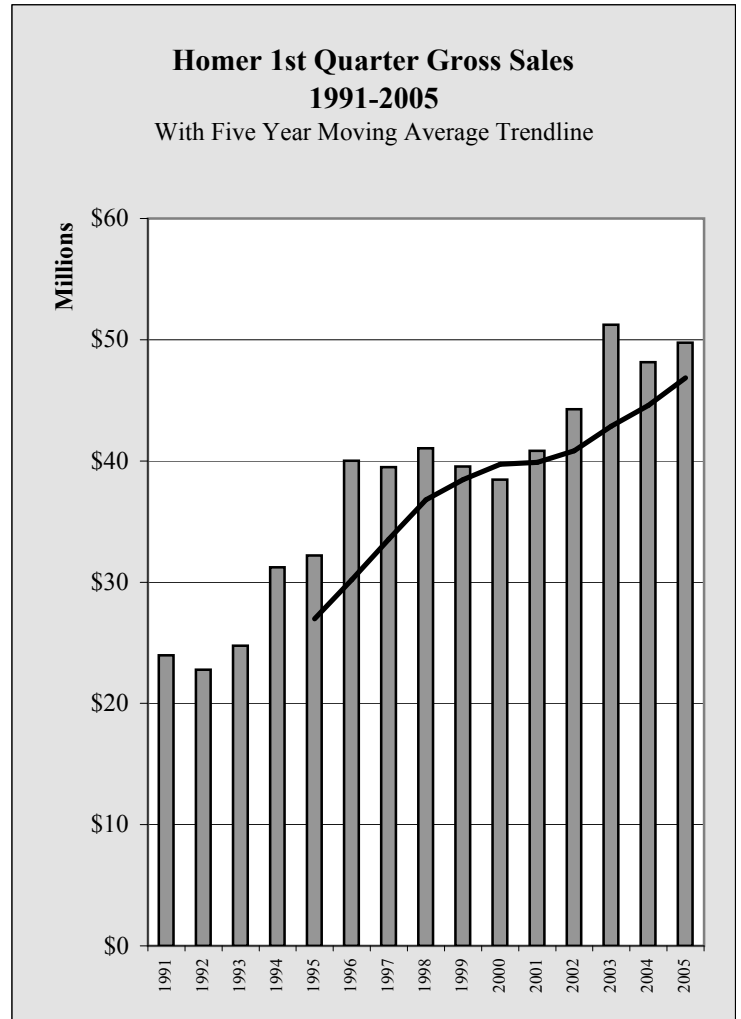


Chart 2.2

Homer Sales

Homer 1st Quarter Taxable Sales by Industry - 1999-2005 - in \$								
	1999	2000	2001	2002	2003	2004	2005	Annual Change
AFF	79,865	108,581	108,289	117,273	135,734	157,957	181,451	14.9%
Min	195	0	1,640	710	0	0	0	NA
Const	182,033	214,922	178,792	237,634	243,346	276,885	219,709	-20.6%
Manu	345,033	352,233	325,875	263,252	277,526	305,351	212,592	-30.4%
TCPU	2,300,797	2,182,015	2,129,650	2,225,122	2,890,615	2,806,506	2,836,081	1.1%
Whole	1,510,910	1,649,698	1,691,835	1,662,455	2,010,808	2,234,379	1,690,457	-24.3%
Retail	8,815,674	9,187,838	9,549,519	10,100,688	11,998,705	12,978,758	13,291,621	2.4%
FIRE	661,240	675,571	692,034	768,568	900,146	890,703	826,738	-7.2%
Service	2,742,720	2,957,002	3,087,570	3,321,402	3,993,060	4,175,189	4,185,920	0.3%
Govt	0	0	0	0	0	394	0	-100.0%
Total	16,638,467	17,327,860	17,765,204	18,697,104	22,449,940	23,826,122	23,444,569	-1.6%
Annual Change		4.1%	2.5%	5.2%	20.1%	6.1%	-1.6%	

Table 2.2

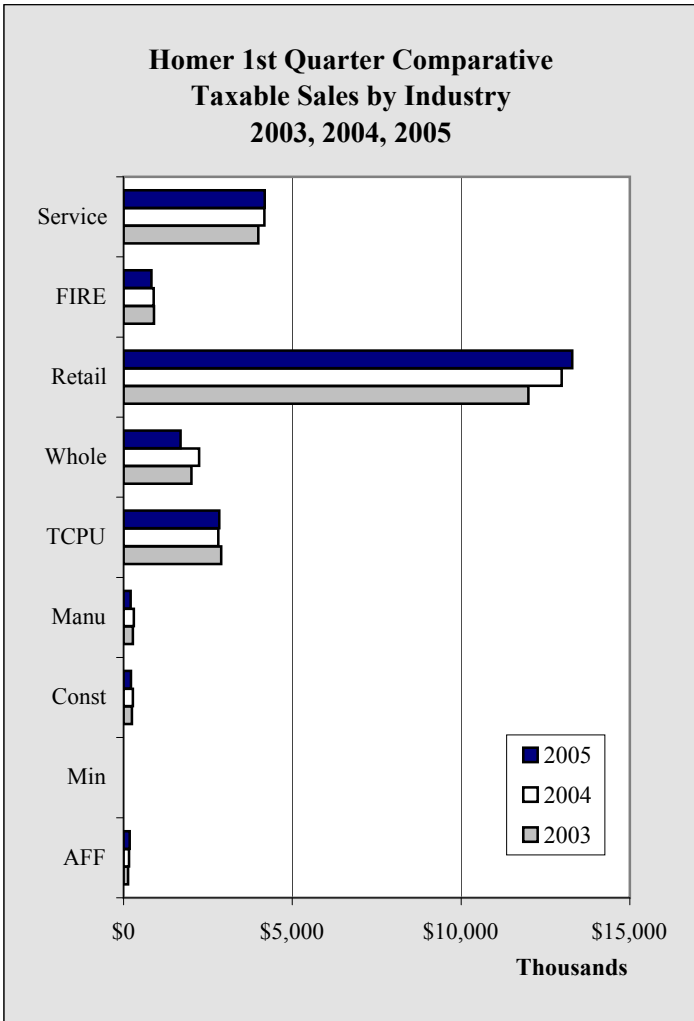


Chart 2.3

Homer's annexation became effective 4/1/2002

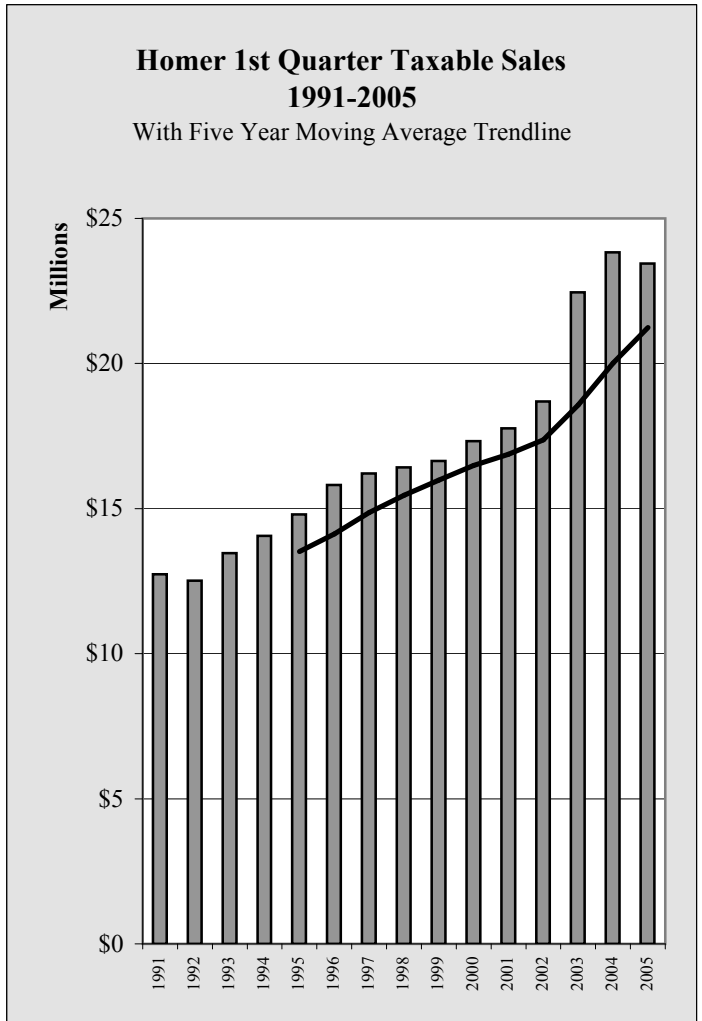


Chart 2.4

Homer Annual Gross Sales by Industry - 1998-2004 - in \$

	1998	1999	2000	2001	2002	2003	2004	Annual Change
AFF	1,231,758	1,132,289	1,763,891	931,926	1,013,352	1,592,413	1,520,013	-4.5%
Min	130	13,595	24,864	15,819	8,582	1,283	151,171	11682.6%
Const	37,787,332	27,642,104	42,378,954	40,149,696	45,829,436	41,984,440	32,449,476	-22.7%
Manu	19,649,701	16,450,883	6,761,789	6,482,895	6,590,594	6,755,907	5,657,729	-16.3%
TCPU	34,491,856	33,675,536	34,493,682	40,495,596	42,137,752	39,996,686	40,511,899	1.3%
Whole	14,672,913	17,513,809	16,999,389	18,602,483	19,915,750	22,075,685	26,528,880	20.2%
Retail	64,712,270	66,221,369	71,465,479	75,795,576	88,239,711	97,820,663	105,672,450	8.0%
FIRE	8,574,588	7,448,936	6,682,678	7,544,432	8,453,334	9,936,484	12,077,132	21.5%
Service	31,322,069	33,743,954	35,410,998	39,685,084	51,007,289	53,867,042	59,092,037	9.7%
Govt	0	0	0	0	0	263	394	49.8%
Total	212,442,617	203,842,475	215,981,724	229,703,507	263,195,800	274,030,603	283,660,787	3.5%
Annual Change		-4.0%	6.0%	6.4%	14.6%	4.1%	3.5%	

Table 2.3

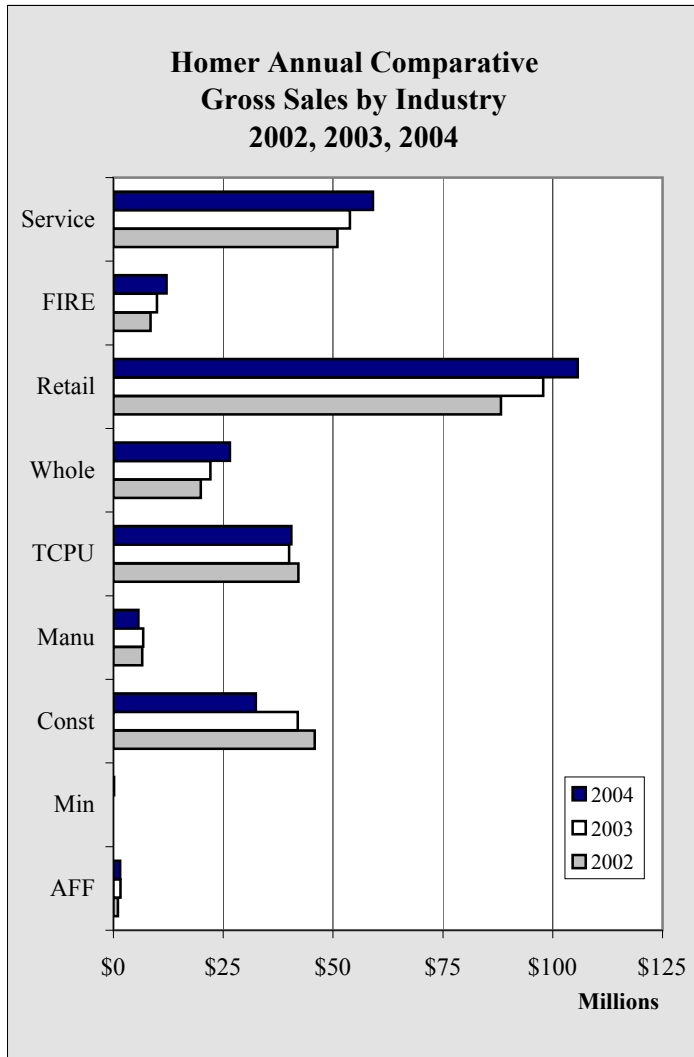


Chart 2.5

Homer's annexation became effective 4/1/2002

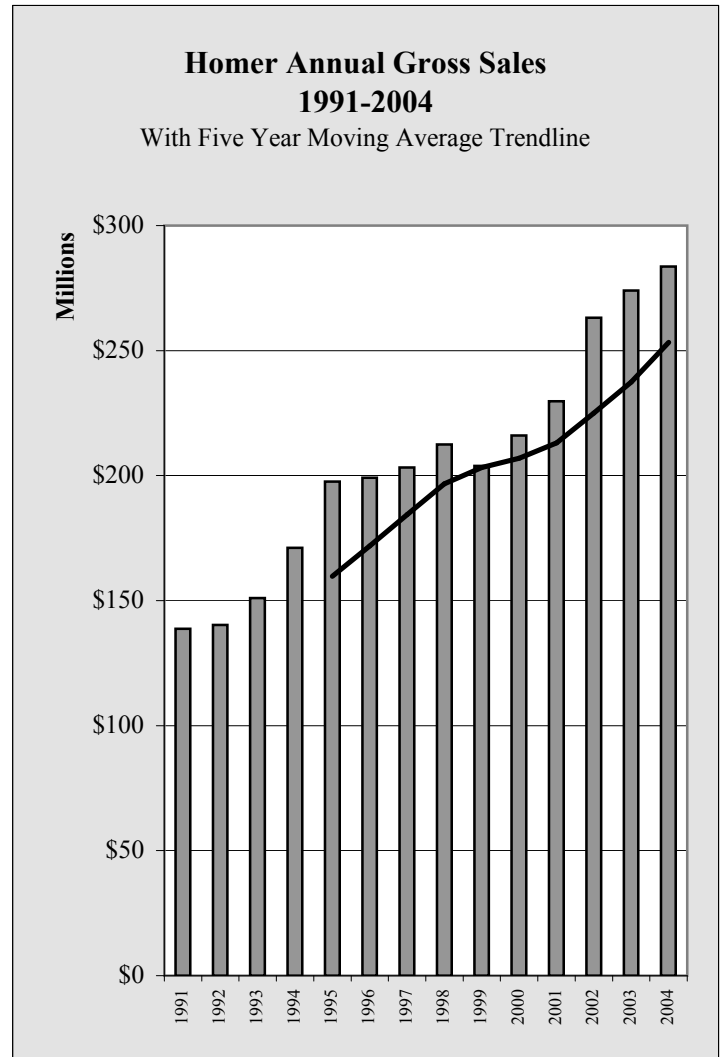


Chart 2.6

Homer Annual Taxable Sales by Industry - 1998-2004 - in \$								
	1998	1999	2000	2001	2002	2003	2004	Annual Change
AFF	626,058	461,892	519,595	577,360	641,294	773,421	912,356	18.0%
Min	130	195	1,104	5,993	2,665	347	104	-70.0%
Const	820,655	891,101	891,188	940,211	1,125,715	1,208,909	1,182,169	-2.2%
Manu	2,087,103	2,084,079	2,045,894	1,769,534	1,822,345	1,848,166	1,857,314	0.5%
TCPU	9,578,082	10,137,988	10,110,454	10,200,922	11,698,087	12,717,059	12,827,427	0.9%
Whole	7,485,103	8,034,552	8,633,107	8,953,325	8,876,648	10,611,085	11,429,493	7.7%
Retail	48,994,370	50,357,048	53,206,860	56,027,806	63,864,887	69,823,667	74,187,604	6.2%
FIRE	2,814,367	2,949,461	3,147,793	3,460,712	3,890,685	4,074,657	4,984,716	22.3%
Service	22,035,474	23,232,422	24,634,121	25,375,676	29,345,792	30,574,151	32,675,985	6.9%
Govt	0	0	0	0	0	263	394	49.8%
Total	94,441,342	98,148,738	103,190,116	107,311,539	121,268,118	131,631,462	140,057,168	6.4%
Annual Change		3.9%	5.1%	4.0%	13.0%	8.5%	6.4%	

Table 2.4

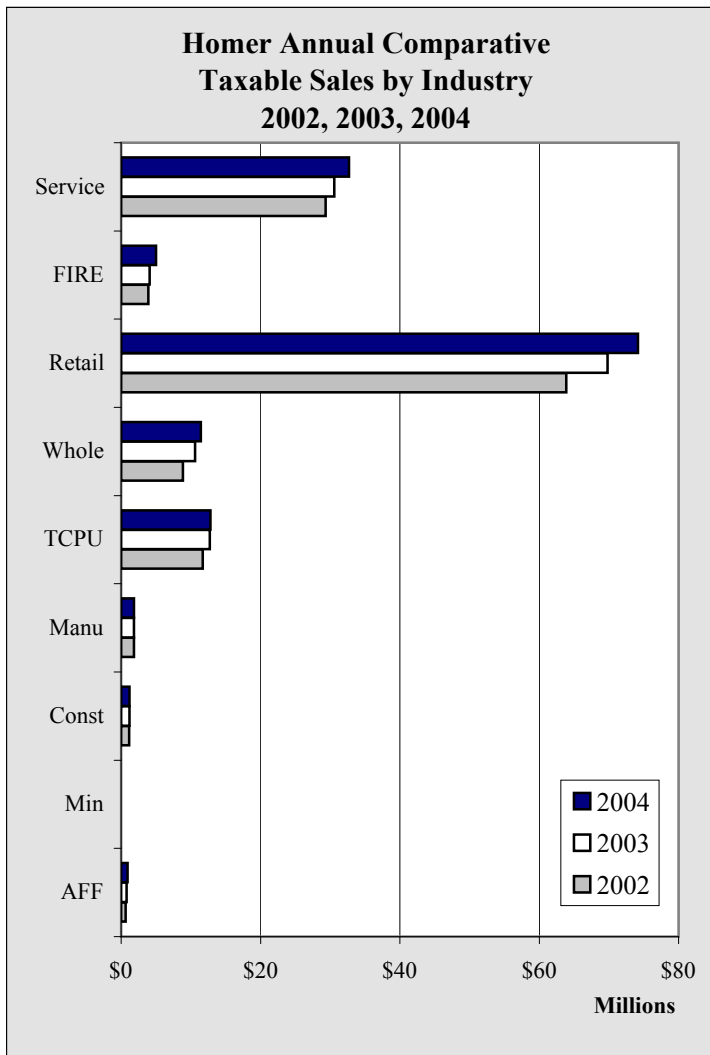


Chart 2.7

Homer's annexation became effective 4/1/2002

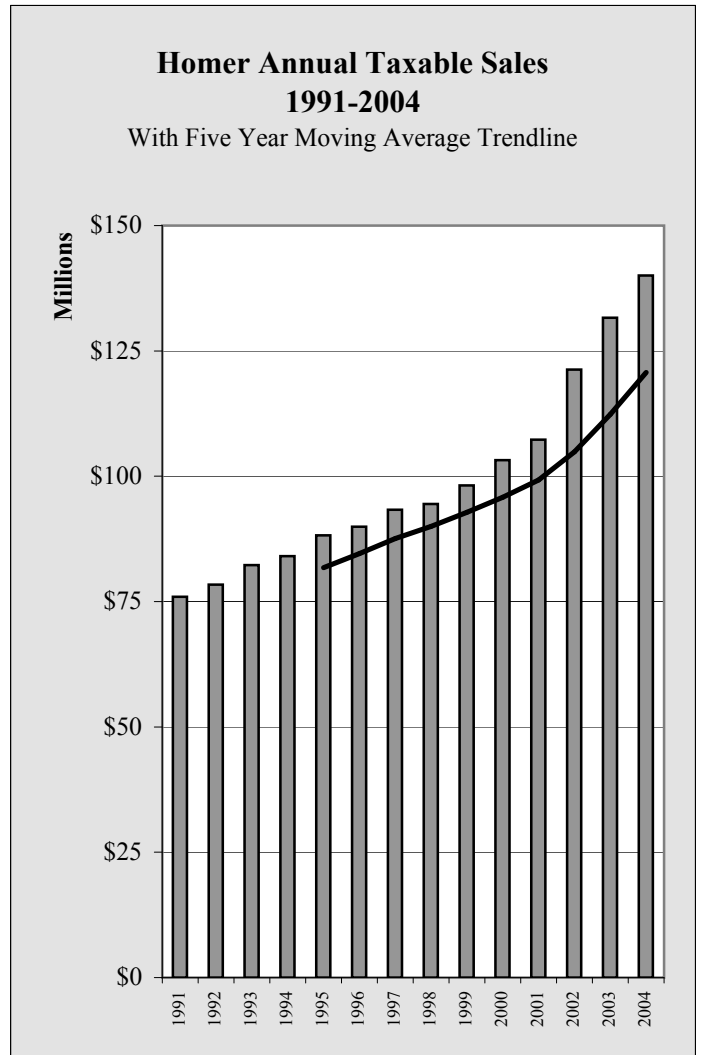


Chart 2.8

Homer Gross Sales by Industry by Quarter - 2001-2005 - in \$					
	1st Quarter	2nd Quarter	3rd Quarter	4th Quarter	Total
2001					
AFF	160,466	221,357	369,625	180,478	931,926
Min	9,137	1,844	4,209	629	15,819
Const	8,123,440	6,727,125	13,713,481	11,585,650	40,149,696
Manu	1,325,393	1,455,193	1,967,400	1,734,909	6,482,895
TCPU	8,393,207	8,926,617	12,698,696	10,477,076	40,495,596
Whole	3,500,654	5,204,028	6,252,096	3,645,705	18,602,483
Retail	12,926,124	20,975,149	24,152,918	17,741,385	75,795,576
FIRE	1,405,203	1,982,111	2,278,077	1,879,041	7,544,432
Service	5,001,354	11,364,051	16,017,454	7,302,225	39,685,084
Govt	0	0	0	0	0
Total	40,844,978	56,857,475	77,453,956	54,547,098	229,703,507
2002					
AFF	134,712	250,389	358,911	269,340	1,013,352
Min	1,363	3,836	3,383	0	8,582
Const	8,430,924	7,437,731	15,972,357	13,988,424	45,829,436
Manu	1,253,834	1,790,421	2,153,455	1,392,884	6,590,594
TCPU	9,784,288	10,982,097	11,525,181	9,846,186	42,137,752
Whole	3,358,010	5,360,132	6,595,619	4,601,989	19,915,750
Retail	13,767,872	24,997,009	28,967,558	20,507,272	88,239,711
FIRE	1,527,725	2,046,589	2,696,231	2,182,789	8,453,334
Service	6,006,218	15,803,541	21,417,906	7,779,624	51,007,289
Govt	0	0	0	0	0
Total	44,264,946	68,671,745	89,690,601	60,568,508	263,195,800
2003					
AFF	249,333	420,146	485,712	437,222	1,592,413
Min	0	0	448	835	1,283
Const	9,795,523	11,071,038	11,629,038	9,488,841	41,984,440
Manu	1,317,636	1,899,935	2,019,280	1,519,056	6,755,907
TCPU	9,460,657	9,778,534	11,335,988	9,421,507	39,996,686
Whole	4,044,595	6,092,813	6,629,440	5,308,837	22,075,685
Retail	17,108,705	27,557,784	31,205,896	21,948,278	97,820,663
FIRE	1,989,925	2,547,744	2,825,493	2,573,322	9,936,484
Service	7,261,902	15,919,950	21,057,005	9,628,185	53,867,042
Govt	0	0	0	263	263
Total	51,228,276	75,287,944	87,188,300	60,326,346	274,030,866
2004					
AFF	229,352	430,095	512,372	348,194	1,520,013
Min	256	104	695	150,116	151,171
Const	4,325,965	5,685,550	9,736,168	12,701,793	32,449,476
Manu	1,116,143	1,807,647	1,752,124	981,815	5,657,729
TCPU	9,977,448	5,034,111	13,967,425	11,532,915	40,511,899
Whole	4,122,172	6,421,737	7,325,763	8,659,208	26,528,880
Retail	18,227,417	30,021,416	34,477,697	22,945,920	105,672,450
FIRE	2,247,358	2,619,310	3,341,741	3,868,723	12,077,132
Service	7,895,860	16,947,718	22,804,715	11,443,744	59,092,037
Govt	394	0	0	0	394
Total	48,142,365	68,967,688	93,918,700	72,632,428	283,661,181
2005					
AFF	264,446				264,446
Min	0				0
Const	4,253,028				4,253,028
Manu	725,931				725,931
TCPU	10,868,207				10,868,207
Whole	3,928,233				3,928,233
Retail	19,595,441				19,595,441
FIRE	1,996,686				1,996,686
Service	8,120,660				8,120,660
Govt	0				0
Total	49,752,632				49,752,632
Year to Date					

Table 2.5

Homer Taxable Sales by Industry by Quarter - 2001-2005 - in \$					
	1st Quarter	2nd Quarter	3rd Quarter	4th Quarter	Total
2001					
AFF	108,289	146,035	177,823	145,213	577,360
Min	1,640	1,549	2,175	629	5,993
Const	178,792	217,384	280,862	263,173	940,211
Manu	325,875	528,377	525,720	389,562	1,769,534
TCPU	2,129,650	2,581,062	3,245,406	2,244,804	10,200,922
Whole	1,691,835	2,538,512	2,883,405	1,839,573	8,953,325
Retail	9,549,519	15,861,254	18,278,875	12,338,158	56,027,806
FIRE	692,034	923,819	1,006,507	838,352	3,460,712
Service	3,087,570	7,393,485	11,173,929	3,720,692	25,375,676
Govt	0	0	0	0	0
Total	17,765,204	30,191,477	37,574,702	21,780,156	107,311,539
2002					
AFF	117,273	166,982	195,905	161,134	641,294
Min	710	1,955	0	0	2,665
Const	237,634	266,994	324,412	296,675	1,125,715
Manu	263,252	557,095	597,126	404,872	1,822,345
TCPU	2,225,122	2,873,043	3,752,729	2,847,193	11,698,087
Whole	1,662,455	2,518,226	2,928,198	1,767,769	8,876,648
Retail	10,100,688	18,247,283	21,308,629	14,208,287	63,864,887
FIRE	768,568	1,005,737	1,165,651	950,729	3,890,685
Service	3,321,402	8,630,174	12,978,461	4,415,755	29,345,792
Govt	0	0	0	0	0
Total	18,697,104	34,267,489	43,251,111	25,052,414	121,268,118
2003					
AFF	135,734	212,539	250,473	174,675	773,421
Min	0	0	0	347	347
Const	243,346	312,650	335,295	317,618	1,208,909
Manu	277,526	532,466	618,081	420,093	1,848,166
TCPU	2,890,615	3,212,975	3,752,532	2,860,937	12,717,059
Whole	2,010,808	2,966,252	3,370,701	2,263,324	10,611,085
Retail	11,998,705	19,762,887	22,642,061	15,420,014	69,823,667
FIRE	900,146	1,062,609	1,146,791	965,111	4,074,657
Service	3,993,060	8,965,906	12,965,331	4,649,854	30,574,151
Govt	0	0	0	263	263
Total	22,449,940	37,028,284	45,081,265	27,072,236	131,631,725
2004					
AFF	157,957	247,630	305,982	200,787	912,356
Min	0	104	0	0	104
Const	276,885	319,319	300,979	284,986	1,182,169
Manu	305,351	608,034	632,048	311,881	1,857,314
TCPU	2,806,506	3,248,197	3,909,932	2,862,792	12,827,427
Whole	2,234,379	3,320,836	3,998,096	1,876,182	11,429,493
Retail	12,978,758	21,267,878	24,233,534	15,707,434	74,187,604
FIRE	890,703	1,153,472	1,453,305	1,487,236	4,984,716
Service	4,175,189	9,501,560	14,224,768	4,774,468	32,675,985
Govt	394	0	0	0	394
Total	23,826,122	39,667,030	49,058,644	27,505,766	140,057,562
2005					
					Year to Date
AFF	181,451				181,451
Min	0				0
Const	219,709				219,709
Manu	212,592				212,592
TCPU	2,836,081				2,836,081
Whole	1,690,457				1,690,457
Retail	13,291,621				13,291,621
FIRE	826,738				826,738
Service	4,185,920				4,185,920
Govt	0				0
Total	23,444,569				23,444,569

Table 2.6