

KPB Sales

KPB 1st Quarter Taxable Sales by Area - 1999-2005 - in \$								
	1999	2000	2001	2002	2003	2004	2005	Annual Change
Homer	16,638,467	17,327,860	17,765,204	18,697,104	22,449,940	23,826,122	23,444,569	-1.6%
Kenai	25,183,897	25,521,513	27,889,241	28,938,342	31,093,476	29,545,991	29,236,679	-1.0%
Seldovia	569,438	569,093	583,555	573,624	598,970	566,726	563,760	-0.5%
Seward	9,218,678	9,374,360	9,073,493	9,051,044	9,289,341	9,493,481	9,943,549	4.7%
Soldotna	28,439,928	29,664,420	32,492,377	33,736,608	34,463,622	37,383,328	38,071,634	1.8%
KPB Unincorporated	34,348,468	35,696,361	38,055,259	41,804,884	38,385,673	39,081,187	39,575,966	1.3%
Total	114,398,876	118,153,607	125,859,129	132,801,606	136,281,022	139,896,835	140,836,157	0.7%
Annual Change		3.3%	6.5%	5.5%	2.6%	2.7%	0.7%	

Table 1.10

KPB 1st Quarter Taxable Sales Ten Year Change by Area - 1995 v 2005 - in \$				
	10 Year Change			
	1995	2005	Percentage	Numerical
Homer	14,797,530	23,444,569	58.4%	8,647,039
Kenai	22,811,754	29,236,679	28.2%	6,424,925
Seldovia	602,805	563,760	-6.5%	-39,045
Seward	7,674,012	9,943,549	29.6%	2,269,537
Soldotna	23,569,520	38,071,634	61.5%	14,502,114
KPB Unincorporated	29,644,424	39,575,966	33.5%	9,931,542
Total	99,100,045	140,836,157	42.1%	41,736,112

Table 1.11

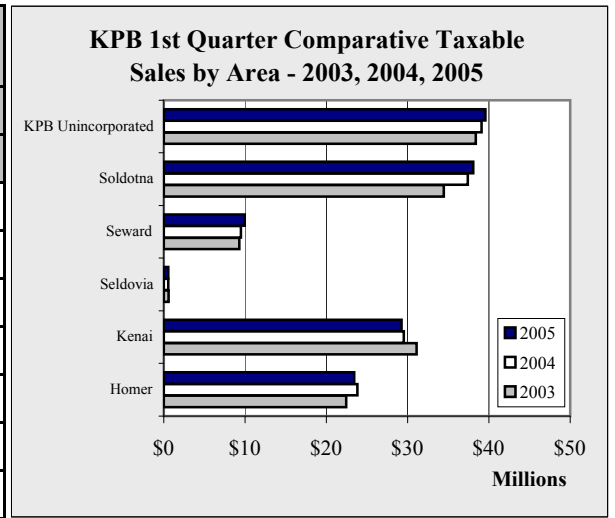


Chart 1.9

KPB 1st Quarter Taxable Sales One Year Change by Area - 2004 v 2005 - in \$				
	1 Year Change			
	2004	2005	Percentage	Numerical
Homer	23,826,122	23,444,569	-1.6%	-381,553
Kenai	29,545,991	29,236,679	-1.0%	-309,312
Seldovia	566,726	563,760	-0.5%	-2,966
Seward	9,493,481	9,943,549	4.7%	450,068
Soldotna	37,383,328	38,071,634	1.8%	688,306
KPB Unincorporated	39,081,187	39,575,966	1.3%	494,779
Total	139,896,835	140,836,157	0.7%	939,322

Table 1.12

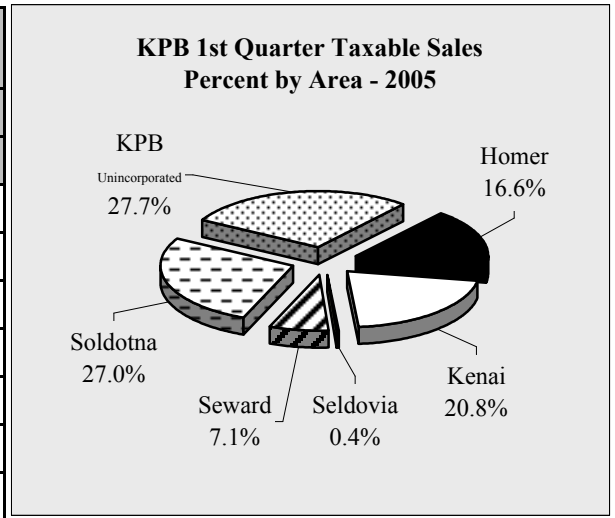


Chart 1.10

KPB Sales

KPB Annual Gross Sales by Industry - 1998-2004 - in \$

	1998	1999	2000	2001	2002	2003	2004	Annual Change
AFF	30,373,442	32,347,943	24,816,872	17,584,763	16,750,059	22,009,310	27,631,235	25.5%
Min	190,689,442	115,241,075	121,868,065	126,250,792	113,521,181	106,561,739	165,354,111	55.2%
Const	187,102,648	166,008,223	185,994,582	241,706,588	229,399,098	258,447,580	237,476,277	-8.1%
Manu	147,360,433	165,066,528	117,856,947	287,725,053	201,047,383	199,442,339	170,708,311	-14.4%
TCPU	159,766,641	169,321,042	156,272,089	173,246,581	172,554,610	158,372,166	181,051,679	14.3%
Whole	149,117,372	155,121,630	171,235,874	177,036,125	188,223,387	194,212,922	366,072,552	88.5%
Retail	547,202,550	545,752,691	580,370,933	633,597,773	625,008,358	644,695,462	699,834,751	8.6%
FIRE	50,782,517	51,186,806	50,390,903	54,153,772	54,924,793	58,011,247	64,843,380	11.8%
Service	211,144,805	220,251,298	235,820,173	256,185,223	276,510,185	278,240,792	308,996,885	11.1%
Govt	26,751	28,814	17,350	20,316	22,579	41,980	35,105	-16.4%
Total	1,673,566,601	1,620,326,050	1,644,643,788	1,967,506,986	1,877,961,633	1,920,035,537	2,222,004,286	15.7%
Annual Change		-3.2%	1.5%	19.6%	-4.6%	2.2%	15.7%	

Table 1.13

KPB Annual Gross Sales Ten Year Change by Industry - 1994 v 2004 - in \$

			10 Year Change	
	1994	2004	Percentage	Numerical
AFF	55,520,292	27,631,235	-50.2%	-27,889,057
Min	124,428,885	165,354,111	32.9%	40,925,226
Const	144,672,165	237,476,277	64.1%	92,804,112
Manu	125,684,092	170,708,311	35.8%	45,024,219
TCPU	216,882,266	181,051,679	-16.5%	-35,830,587
Whole	88,960,238	366,072,552	311.5%	277,112,314
Retail	406,692,795	699,834,751	72.1%	293,141,956
FIRE	55,375,125	64,843,380	17.1%	9,468,255
Service	165,995,597	308,996,885	86.1%	143,001,288
Govt	10,251	35,105	242.5%	24,854
Total	1,384,221,706	2,222,004,286	60.5%	837,782,580

Table 1.14

KPB Annual Gross Sales One Year Change by Industry - 2003 v 2004 - in \$

			1 Year Change	
	2003	2004	Percentage	Numerical
AFF	22,009,310	27,631,235	25.5%	5,621,925
Min	106,561,739	165,354,111	55.2%	58,792,372
Const	258,447,580	237,476,277	-8.1%	-20,971,303
Manu	199,442,339	170,708,311	-14.4%	-28,734,028
TCPU	158,372,166	181,051,679	14.3%	22,679,513
Whole	194,212,922	366,072,552	88.5%	171,859,630
Retail	644,695,462	699,834,751	8.6%	55,139,289
FIRE	58,011,247	64,843,380	11.8%	6,832,133
Service	278,240,792	308,996,885	11.1%	30,756,093
Govt	41,980	35,105	-16.4%	-6,875
Total	1,920,035,537	2,222,004,286	15.7%	301,968,749

Table 1.15

KPB Annual Comparative Gross Sales by Industry - 2002, 2003, 2004

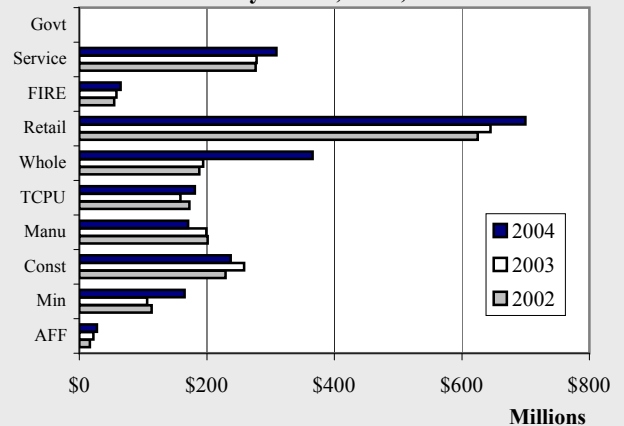


Chart 1.11

KPB Annual Gross Sales Percent by Industry - 2004

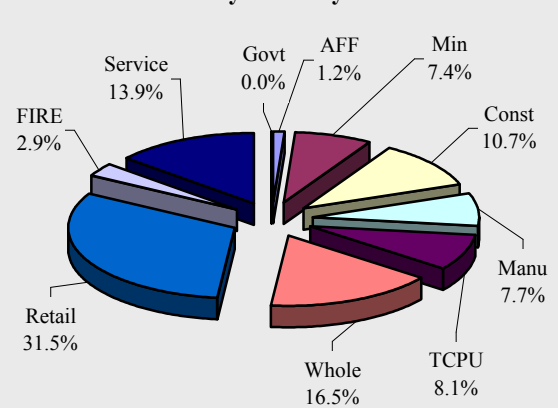


Chart 1.12

KPBR

KPBR Annual Taxable Sales by Industry - 1998-2004 - in \$

	1998	1999	2000	2001	2002	2003	2004	Annual Change
AFF	3,458,989	3,539,802	4,148,862	4,391,790	4,461,252	5,010,961	5,525,243	10.3%
Min	5,202,698	3,828,650	4,613,878	5,863,223	5,848,904	4,885,262	5,502,300	12.6%
Const	9,821,330	9,921,434	9,658,671	10,002,648	10,709,485	11,283,352	11,294,391	0.1%
Manu	9,578,020	9,251,298	9,792,611	9,654,663	9,616,559	9,239,486	9,859,796	6.7%
TCPU	72,108,745	79,282,344	77,420,153	79,415,747	83,947,088	81,373,510	82,707,524	1.6%
Whole	18,357,305	19,290,256	21,493,691	22,282,063	21,690,782	24,282,313	25,769,380	6.1%
Retail	353,131,302	367,123,730	383,777,809	411,721,005	419,549,532	429,266,128	461,616,411	7.5%
FIRE	18,576,711	18,862,816	20,702,551	23,486,072	24,084,827	22,751,829	22,880,826	0.6%
Service	122,225,757	129,434,976	135,510,623	139,066,219	144,301,953	144,717,518	154,902,802	7.0%
Govt	26,744	28,814	17,350	20,316	22,579	41,980	35,040	-16.5%
Total	612,487,601	640,564,120	667,136,199	705,903,746	724,232,961	732,852,339	780,093,713	6.4%
Annual Change		4.6%	4.1%	5.8%	2.6%	1.2%	6.4%	

Table 1.16

KPBR Annual Taxable Sales Ten Year Change by Industry - 1994 v 2004 - in \$

	1994	2004	10 Year Change	
			Percentage	Numerical
AFF	3,454,687	5,525,243	59.9%	2,070,556
Min	6,132,287	5,502,300	-10.3%	-629,987
Const	8,077,694	11,294,391	39.8%	3,216,697
Manu	7,808,695	9,859,796	26.3%	2,051,101
TCPU	64,017,267	82,707,524	29.2%	18,690,257
Whole	19,542,465	25,769,380	31.9%	6,226,915
Retail	299,416,591	461,616,411	54.2%	162,199,820
FIRE	18,378,264	22,880,826	24.5%	4,502,562
Service	100,262,803	154,902,802	54.5%	54,639,999
Govt	10,251	35,040	241.8%	24,789
Total	527,101,004	780,093,713	48.0%	252,992,709

Table 1.17

KPBR Annual Comparative Taxable Sales by Industry - 2002, 2003, 2004

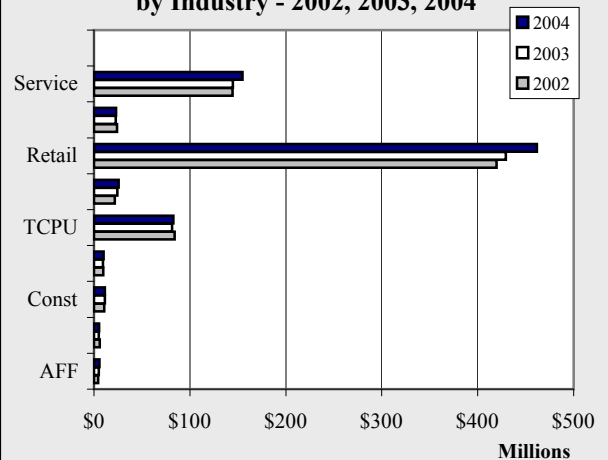


Chart 1.13

KPBR Annual Taxable Sales One Year Change by Industry - 2003 v 2004 - in \$

	2003	2004	1 Year Change	
			Percentage	Numerical
AFF	5,010,961	5,525,243	10.3%	514,282
Min	4,885,262	5,502,300	12.6%	617,038
Const	11,283,352	11,294,391	0.1%	11,039
Manu	9,239,486	9,859,796	6.7%	620,310
TCPU	81,373,510	82,707,524	1.6%	1,334,014
Whole	24,282,313	25,769,380	6.1%	1,487,067
Retail	429,266,128	461,616,411	7.5%	32,350,283
FIRE	22,751,829	22,880,826	0.6%	128,997
Service	144,717,518	154,902,802	7.0%	10,185,284
Govt	41,980	35,040	-16.5%	-6,940
Total	732,852,339	780,093,713	6.4%	47,241,374

Table 1.18

KPBR Annual Taxable Sales Percent by Industry - 2004

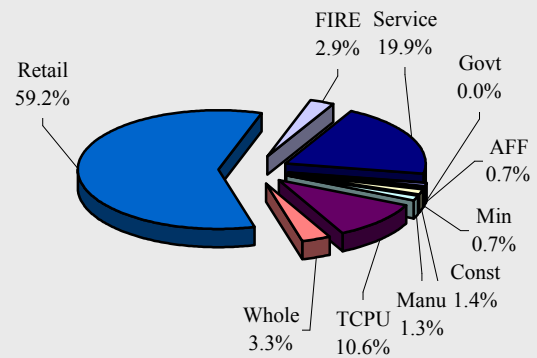


Chart 1.14

KPB Sales

KPB Annual Gross Sales by Area - 1998-2004 - in \$								
	1998	1999	2000	2001	2002	2003	2004	Annual Change
Homer	212,442,617	203,842,475	215,981,724	229,703,507	263,195,800	274,030,866	283,661,181	3.5%
Kenai	280,079,940	270,746,118	283,682,464	310,426,425	279,745,403	283,340,242	469,300,234	65.6%
Seldovia	4,723,739	4,844,770	5,267,325	5,249,471	4,817,877	7,259,554	8,325,201	14.7%
Seward	132,506,248	130,155,521	142,152,279	148,360,553	142,367,126	156,959,598	166,135,648	5.8%
Soldotna	250,793,664	277,588,737	289,255,311	309,118,231	325,899,019	337,772,973	361,104,164	6.9%
KPB Unincorporated	793,020,393	733,148,429	708,304,685	964,648,799	861,936,408	860,672,304	933,477,858	8.5%
Total	1,673,566,601	1,620,326,050	1,644,643,788	1,967,506,986	1,877,961,633	1,920,035,537	2,222,004,286	15.7%
Annual Change		-3.2%	1.5%	19.6%	-4.6%	2.2%	15.7%	

Table 1.19

KPB Annual Gross Sales Ten Year Change by Area - 1994 v 2004				
	10 Year Change			
	1994	2004	Percentage	Numerical
Homer	171,092,369	283,661,181	65.8%	112,568,812
Kenai	249,216,590	469,300,234	88.3%	220,083,644
Seldovia	5,275,307	8,325,201	57.8%	3,049,894
Seward	99,875,014	166,135,648	66.3%	66,260,634
Soldotna	194,609,544	361,104,164	85.6%	166,494,620
KPB Unincorporated	664,152,882	933,477,858	40.6%	269,324,976
Total	1,384,221,706	2,222,004,286	60.5%	837,782,580

Table 1.20

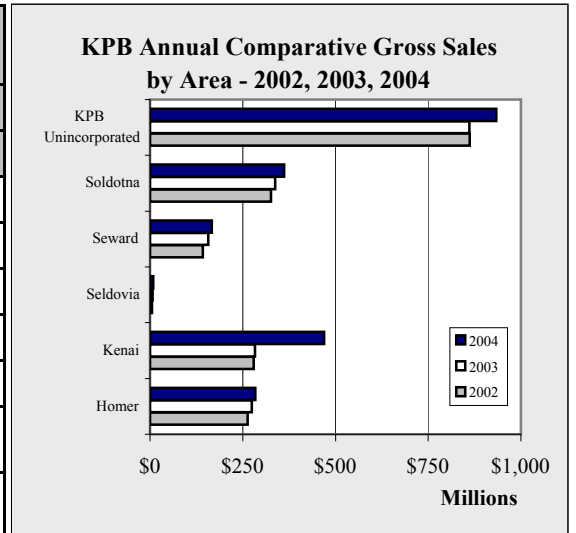


Chart 1.15

KPB Annual Gross Sales One Year Change by Area - 2003 v 2004				
	1 Year Change			
	2003	2004	Percentage	Numerical
Homer	274,030,866	283,661,181	3.5%	9,630,315
Kenai	283,340,242	469,300,234	65.6%	185,959,992
Seldovia	7,259,554	8,325,201	14.7%	1,065,647
Seward	156,959,598	166,135,648	5.8%	9,176,050
Soldotna	337,772,973	361,104,164	6.9%	23,331,191
KPB Unincorporated	860,672,304	933,477,858	8.5%	72,805,554
Total	1,920,035,537	2,222,004,286	15.7%	301,968,749

Table 1.21

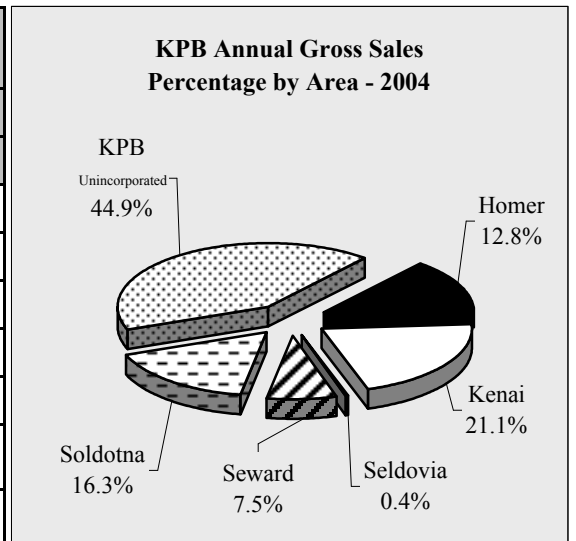


Chart 1.16

KPB Sales

KPB Annual Taxable Sales by Area - 1998-2004 - in \$

	1998	1999	2000	2001	2002	2003	2004	Annual Change
Homer	94,441,342	98,148,738	103,190,116	107,311,539	121,268,118	131,631,725	140,057,562	6.4%
Kenai	120,030,707	124,367,091	127,766,126	137,043,924	136,769,610	121,312,219	138,627,446	14.3%
Seldovia	3,398,293	3,229,249	3,418,123	3,359,279	3,272,389	3,376,944	3,381,682	0.1%
Seward	67,278,264	71,472,199	73,983,426	74,225,591	75,598,696	76,375,738	79,929,511	4.7%
Soldotna	147,789,661	155,952,764	159,436,128	172,418,438	176,977,868	190,616,882	200,050,269	4.9%
KPB Unincorporated	179,549,334	187,394,079	199,342,280	211,544,975	210,346,280	209,538,831	218,047,243	4.1%
Total	612,487,601	640,564,120	667,136,199	705,903,746	724,232,961	732,852,339	780,093,713	6.4%
Annual Change		4.6%	4.1%	5.8%	2.6%	1.2%	6.4%	

Table 1.22

KPB Annual Taxable Sales Ten Year Change by Area - 1994 v 2004 - in \$

	10 Year Change			
	1994	2004	Percentage	Numerical
Homer	84,045,458	140,057,562	66.6%	56,012,104
Kenai	114,402,035	138,627,446	21.2%	24,225,411
Seldovia	3,117,185	3,381,682	8.5%	264,497
Seward	53,259,177	79,929,511	50.1%	26,670,334
Soldotna	119,702,481	200,050,269	67.1%	80,347,788
KPB Unincorporated	152,574,668	218,047,243	42.9%	65,472,575
Total	527,101,004	780,093,713	48.0%	252,992,709

Table 1.23

KPB Annual Comparative Taxable Sales by Area - 2002, 2003, 2004

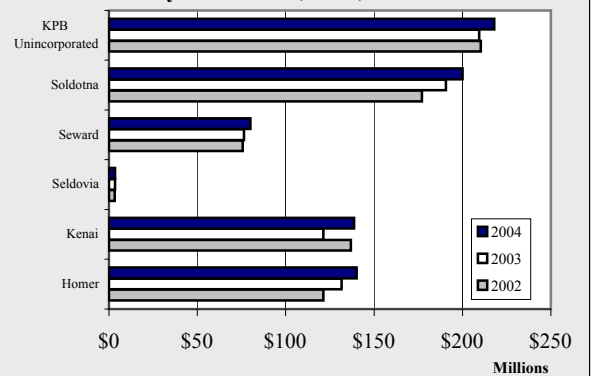


Chart 1.17

KPB Annual Taxable Sales One Year Change by Area - 2003 v 2004 - in \$

	1 Year Change			
	2003	2004	Percentage	Numerical
Homer	131,631,725	140,057,562	6.4%	8,425,837
Kenai	121,312,219	138,627,446	14.3%	17,315,227
Seldovia	3,376,944	3,381,682	0.1%	4,738
Seward	76,375,738	79,929,511	4.7%	3,553,773
Soldotna	190,616,882	200,050,269	4.9%	9,433,387
KPB Unincorporated	209,538,831	218,047,243	4.1%	8,508,412
Total	732,852,339	780,093,713	6.4%	47,241,374

Table 1.24

KPB Annual Taxable Sales Percent by Area - 2004

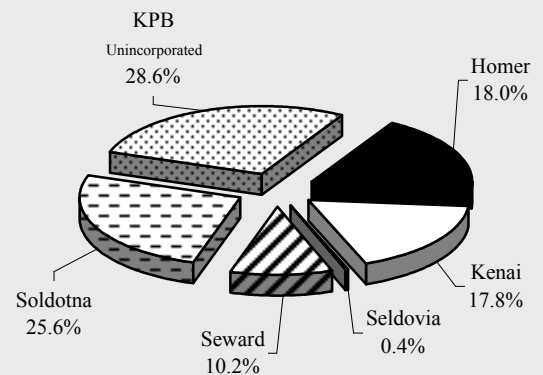


Chart 1.18

KPB Sales

KPB Annual Gross Sales by Industry by Quarter - 2002-2005 - in \$					
	1st Quarter	2nd Quarter	3rd Quarter	4th Quarter	Total
0					
AFF	2,004,841	2,856,503	9,835,705	2,053,010	16,750,059
Min	34,662,385	29,861,507	26,316,221	22,681,068	113,521,181
Const	43,149,133	49,852,546	72,113,003	64,284,416	229,399,098
Manu	21,341,761	44,663,448	56,768,859	78,273,315	201,047,383
TCPU	40,723,392	42,378,179	51,457,523	37,995,516	172,554,610
Whole	37,128,746	46,538,996	57,145,760	47,409,885	188,223,387
Retail	115,899,097	165,285,986	198,420,434	145,402,841	625,008,358
FIRE	12,389,238	14,756,677	15,233,449	12,545,429	54,924,793
Service	43,234,458	77,421,202	109,778,499	46,076,026	276,510,185
Govt	6,700	7,859	4,290	3,730	22,579
Total	350,539,751	473,622,903	597,073,743	456,725,236	1,877,961,633
2003					
AFF	2,019,939	4,045,723	13,491,140	2,452,508	22,009,310
Min	19,260,142	25,083,685	30,366,980	31,850,932	106,561,739
Const	43,362,431	67,758,953	81,935,651	65,390,545	258,447,580
Manu	38,576,448	34,259,747	66,216,357	60,389,787	199,442,339
TCPU	38,217,073	38,841,966	43,819,198	37,493,929	158,372,166
Whole	35,918,425	50,841,751	60,869,241	46,583,505	194,212,922
Retail	123,118,509	170,711,911	201,816,813	149,048,229	644,695,462
FIRE	11,704,586	15,275,186	16,074,854	14,956,621	58,011,247
Service	41,556,541	77,645,713	108,482,303	50,556,235	278,240,792
Govt	12,319	8,680	12,192	8,789	41,980
Total	353,746,413	484,473,315	623,084,729	458,731,080	1,920,035,537
2004					
AFF	2,340,926	3,911,032	15,695,017	5,684,260	27,631,235
Min	39,801,394	32,098,347	39,000,757	54,453,613	165,354,111
Const	28,642,511	42,389,136	67,076,832	99,367,798	237,476,277
Manu	26,107,055	15,540,229	97,207,179	31,853,848	170,708,311
TCPU	38,967,049	35,418,629	55,432,460	51,233,541	181,051,679
Whole	41,782,771	50,630,515	55,365,704	218,293,562	366,072,552
Retail	126,831,904	187,714,938	224,413,635	160,874,274	699,834,751
FIRE	13,304,735	14,402,330	16,956,161	20,180,154	64,843,380
Service	43,080,435	82,270,855	119,932,470	63,713,125	308,996,885
Govt	13,663	8,521	9,184	3,737	35,105
Total	360,872,443	464,384,532	691,089,399	705,657,912	2,222,004,286
2005					
Year to Date					
AFF	2,951,383				2,951,383
Min	39,831,609				39,831,609
Const	38,194,463				38,194,463
Manu	9,120,078				9,120,078
TCPU	58,281,566				58,281,566
Whole	36,667,868				36,667,868
Retail	129,130,943				129,130,943
FIRE	11,269,988				11,269,988
Service	43,629,834				43,629,834
Govt	15,214				15,214
Total	369,092,946				369,092,946

Table 1.25

KPB Sales

KPB Annual Taxable Sales by Industry by Quarter - 2002-2005 - in \$					
	1st Quarter	2nd Quarter	3rd Quarter	4th Quarter	Total
0					
AFF	796,380	1,423,988	1,400,008	840,876	4,461,252
Min	1,482,601	1,484,251	1,550,583	1,331,469	5,848,904
Const	2,037,148	2,677,823	3,288,688	2,705,826	10,709,485
Manu	1,307,744	2,791,765	3,717,020	1,800,030	9,616,559
TCPU	21,573,935	21,477,202	21,106,028	19,789,923	83,947,088
Whole	4,783,261	5,679,123	6,316,722	4,911,676	21,690,782
Retail	76,421,463	109,883,510	136,536,484	96,708,075	419,549,532
FIRE	5,453,086	6,078,006	6,917,181	5,636,554	24,084,827
Service	18,939,288	41,353,274	62,644,991	21,364,400	144,301,953
Govt	6,700	7,859	4,290	3,730	22,579
Total	132,801,606	192,856,801	243,481,995	155,092,559	724,232,961
2003					
AFF	763,045	1,577,278	1,697,754	972,884	5,010,961
Min	1,233,618	1,170,493	1,313,871	1,167,280	4,885,262
Const	2,059,743	3,128,868	3,321,173	2,773,568	11,283,352
Manu	1,438,887	2,607,213	3,333,206	1,860,180	9,239,486
TCPU	21,650,525	20,321,138	19,718,329	19,683,518	81,373,510
Whole	5,052,561	6,337,983	7,103,240	5,788,529	24,282,313
Retail	79,981,563	112,417,564	139,063,076	97,803,925	429,266,128
FIRE	5,309,694	5,975,269	6,458,624	5,008,242	22,751,829
Service	18,779,067	41,517,128	62,826,689	21,594,634	144,717,518
Govt	12,319	8,680	12,192	8,789	41,980
Total	136,281,022	195,061,614	244,848,154	156,661,549	732,852,339
2004					
AFF	889,277	1,674,503	1,979,566	981,897	5,525,243
Min	1,047,668	1,082,504	1,908,215	1,463,913	5,502,300
Const	2,217,009	2,933,623	3,291,595	2,852,164	11,294,391
Manu	1,512,130	2,737,701	3,843,780	1,766,185	9,859,796
TCPU	21,021,541	19,473,926	21,221,357	20,990,700	82,707,524
Whole	5,892,430	6,600,388	7,644,161	5,632,401	25,769,380
Retail	83,151,986	122,379,113	153,285,306	102,800,006	461,616,411
FIRE	4,891,080	5,713,200	6,620,051	5,656,495	22,880,826
Service	19,260,116	44,465,495	69,132,092	22,045,099	154,902,802
Govt	13,598	8,521	9,184	3,737	35,040
Total	139,896,835	207,068,974	268,935,307	164,192,597	780,093,713
2005					
Year to Date					
AFF	930,189				930,189
Min	1,087,830				1,087,830
Const	2,016,842				2,016,842
Manu	1,309,950				1,309,950
TCPU	23,066,441				23,066,441
Whole	5,126,430				5,126,430
Retail	84,027,746				84,027,746
FIRE	4,496,343				4,496,343
Service	18,759,172				18,759,172
Govt	15,214				15,214
Total	140,836,157				140,836,157

Table 1.26

KPB Sales

KPB Annual Gross Sales by Area by Quarter - 2000-2005 - in \$					
	1st Qtr	2nd Qtr	3rd Qtr	4th Qtr	Total
0					
Homer	38,455,167	59,287,582	70,009,668	48,229,307	215,981,724
Kenai	55,609,576	66,158,563	89,505,566	72,408,759	283,682,464
Seldovia	1,150,692	1,526,900	1,693,636	896,097	5,267,325
Seward	19,087,797	38,014,037	57,260,079	27,790,366	142,152,279
Soldotna	55,201,896	72,515,215	89,530,301	72,007,899	289,255,311
KPB Unincorporated	126,664,981	183,977,517	225,474,396	172,187,791	708,304,685
Total	296,170,109	421,479,814	533,473,646	393,520,219	1,644,643,788
2001					
Homer	40,844,978	56,857,475	77,453,956	54,547,098	229,703,507
Kenai	62,418,286	76,673,936	94,911,501	76,422,702	310,426,425
Seldovia	898,811	1,473,305	1,957,554	919,801	5,249,471
Seward	20,531,272	44,452,278	62,873,649	20,503,354	148,360,553
Soldotna	60,802,277	75,042,511	95,670,432	77,603,011	309,118,231
KPB Unincorporated	170,550,210	217,647,967	286,388,798	290,061,824	964,648,799
Total	356,045,834	472,147,472	619,255,890	520,057,790	1,967,506,986
2002					
Homer	44,264,946	68,671,745	89,690,601	60,568,508	263,195,800
Kenai	60,596,369	67,929,291	82,601,639	68,618,104	279,745,403
Seldovia	1,011,712	1,155,055	1,694,174	956,936	4,817,877
Seward	22,954,013	40,385,376	56,721,649	22,306,088	142,367,126
Soldotna	62,331,750	79,761,648	103,624,839	80,180,782	325,899,019
KPB Unincorporated	159,380,961	215,719,788	262,740,841	224,094,818	861,936,408
Total	350,539,751	473,622,903	597,073,743	456,725,236	1,877,961,633
2003					
Homer	51,228,276	75,287,944	87,188,300	60,326,346	274,030,866
Kenai	62,140,357	67,424,299	81,229,776	72,545,810	283,340,242
Seldovia	847,005	1,629,455	2,833,785	1,949,309	7,259,554
Seward	20,933,260	46,984,153	61,707,771	27,334,414	156,959,598
Soldotna	64,233,718	85,179,197	106,204,940	82,155,118	337,772,973
KPB Unincorporated	154,363,797	207,968,267	283,920,157	214,420,083	860,672,304
Total	353,746,413	484,473,315	623,084,729	458,731,080	1,920,035,537
2004					
Homer	48,142,365	68,967,688	93,918,700	72,632,428	283,661,181
Kenai	61,072,504	74,277,836	97,840,299	236,109,595	469,300,234
Seldovia	1,405,047	1,971,670	1,809,067	3,139,417	8,325,201
Seward	21,166,698	42,746,053	63,920,125	38,302,772	166,135,648
Soldotna	69,911,488	89,308,815	107,178,796	94,705,065	361,104,164
KPB Unincorporated	159,174,341	187,112,470	326,422,412	260,768,635	933,477,858
Total	360,872,443	464,384,532	691,089,399	705,657,912	2,222,004,286
2005					
Year to Date					
Homer	49,752,632				49,752,632
Kenai	74,587,278				74,587,278
Seldovia	1,235,684				1,235,684
Seward	24,087,155				24,087,155
Soldotna	64,359,653				64,359,653
KPB Unincorporated	155,070,544				155,070,544
Total	369,092,946				369,092,946

Table 1.27

KPB Sales

KPB Annual Taxable Sales by Area by Quarter - 2000-2005 - in \$

	1st Qtr	2nd Qtr	3rd Qtr	4th Qtr	Total
0					
Homer	17,327,860	28,797,872	35,677,211	21,387,173	103,190,116
Kenai	25,521,513	31,547,905	36,634,363	34,062,345	127,766,126
Seldovia	569,093	1,018,255	1,241,108	589,667	3,418,123
Seward	9,374,360	21,160,898	32,903,473	10,544,695	73,983,426
Soldotna	29,664,420	38,766,616	50,523,183	40,481,909	159,436,128
KPB Unincorporated	35,696,361	55,205,057	66,472,925	41,967,937	199,342,280
Total	118,153,607	176,496,603	223,452,263	149,033,726	667,136,199
2001					
Homer	17,765,204	30,191,477	37,574,702	21,780,156	107,311,539
Kenai	27,889,241	34,988,669	38,162,815	36,003,199	137,043,924
Seldovia	583,555	956,033	1,207,525	612,166	3,359,279
Seward	9,073,493	21,553,264	33,591,333	10,007,501	74,225,591
Soldotna	32,492,377	42,914,074	54,143,248	42,868,739	172,418,438
KPB Unincorporated	38,055,259	57,871,082	68,857,364	46,761,270	211,544,975
Total	125,859,129	188,474,599	233,536,987	158,033,031	705,903,746
2002					
Homer	18,697,104	34,267,489	43,251,111	25,052,414	121,268,118
Kenai	28,938,342	34,649,565	38,192,980	34,988,723	136,769,610
Seldovia	573,624	898,830	1,191,989	607,946	3,272,389
Seward	9,051,044	22,176,474	34,338,060	10,033,118	75,598,696
Soldotna	33,736,608	43,503,934	57,488,623	42,248,703	176,977,868
KPB Unincorporated	41,804,884	57,360,509	69,019,232	42,161,655	210,346,280
Total	132,801,606	192,856,801	243,481,995	155,092,559	724,232,961
2003					
Homer	22,449,940	37,028,284	45,081,265	27,072,236	131,631,725
Kenai	31,093,476	29,801,554	31,351,738	29,065,451	121,312,219
Seldovia	598,970	962,966	1,140,319	674,689	3,376,944
Seward	9,289,341	22,079,581	34,709,882	10,296,934	76,375,738
Soldotna	34,463,622	47,018,649	62,576,271	46,558,340	190,616,882
KPB Unincorporated	38,385,673	58,170,580	69,988,679	42,993,899	209,538,831
Total	136,281,022	195,061,614	244,848,154	156,661,549	732,852,339
2004					
Homer	23,826,122	39,667,030	49,058,644	27,505,766	140,057,562
Kenai	29,545,991	36,254,870	40,032,554	32,794,031	138,627,446
Seldovia	566,726	939,589	1,182,138	693,229	3,381,682
Seward	9,493,481	22,986,031	37,075,050	10,374,949	79,929,511
Soldotna	37,383,328	49,010,429	66,182,951	47,473,561	200,050,269
KPB Unincorporated	39,081,187	58,211,025	75,403,970	45,351,061	218,047,243
Total	139,896,835	207,068,974	268,935,307	164,192,597	780,093,713
2005					
	Year to Date				
Homer	23,444,569				23,444,569
Kenai	29,236,679				29,236,679
Seldovia	563,760				563,760
Seward	9,943,549				9,943,549
Soldotna	38,071,634				38,071,634
KPB Unincorporated	39,575,966				39,575,966
Total	140,836,157				140,836,157

Table 1.28