

Kenai 1st Quarter Gross Sales by Industry - 1999-2005 - in \$								
	1999	2000	2001	2002	2003	2004	2005	Annual Change
AFF	629,110	1,289,933	633,357	1,170,314	1,002,650	1,061,786	1,613,553	52.0%
Min	37,476	1,537,438	852,594	2,214,717	942,570	2,011,733	2,243,621	11.5%
Const	3,055,890	3,678,541	1,914,204	3,777,071	4,115,296	2,314,222	1,901,453	-17.8%
Manu	1,475,182	2,268,724	2,808,918	2,256,153	2,997,006	1,610,022	1,676,345	4.1%
TCPU	6,364,713	6,312,579	6,078,860	6,416,059	7,714,369	6,489,016	20,301,148	212.9%
Whole	1,912,703	2,723,434	4,987,946	3,364,888	3,221,739	5,349,782	4,968,831	-7.1%
Retail	27,061,077	27,945,524	34,150,036	28,474,145	30,107,230	29,814,280	30,440,005	2.1%
FIRE	2,650,247	2,518,820	2,962,348	3,439,155	3,050,602	2,864,673	2,536,399	-11.5%
Service	6,123,394	7,334,383	8,030,023	9,483,867	8,988,895	9,556,990	8,905,923	-6.8%
Govt	105	200	0	0	0	0	0	NA
Total	49,309,897	55,609,576	62,418,286	60,596,369	62,140,357	61,072,504	74,587,278	22.1%
Annual Change		12.8%	12.2%	-2.9%	2.5%	-1.7%	22.1%	

Table 3.1

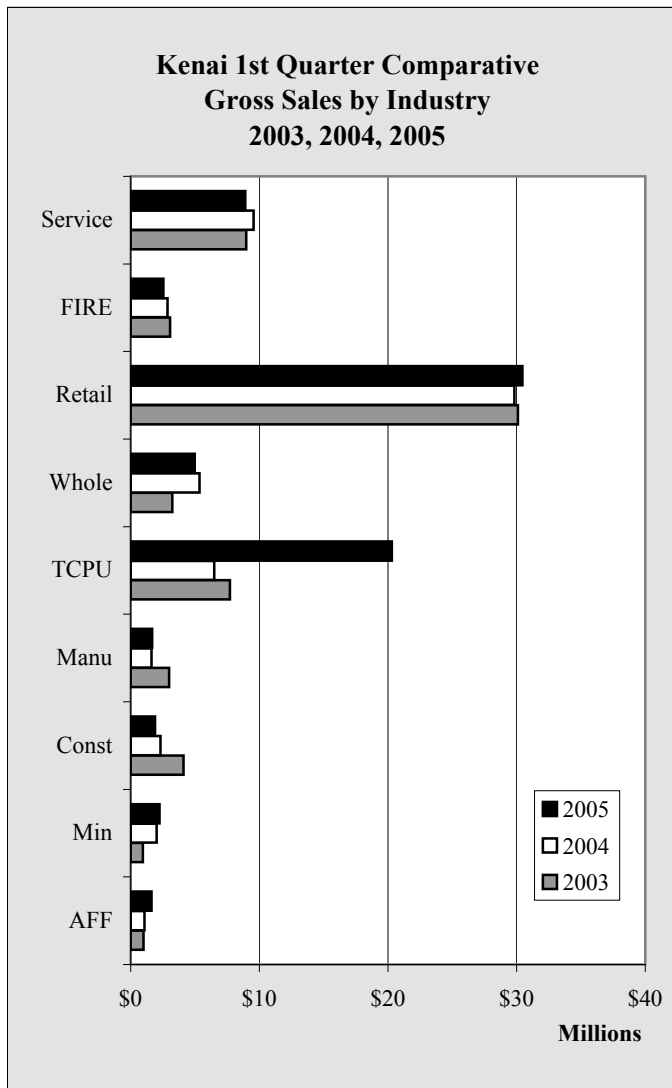


Chart 3.1

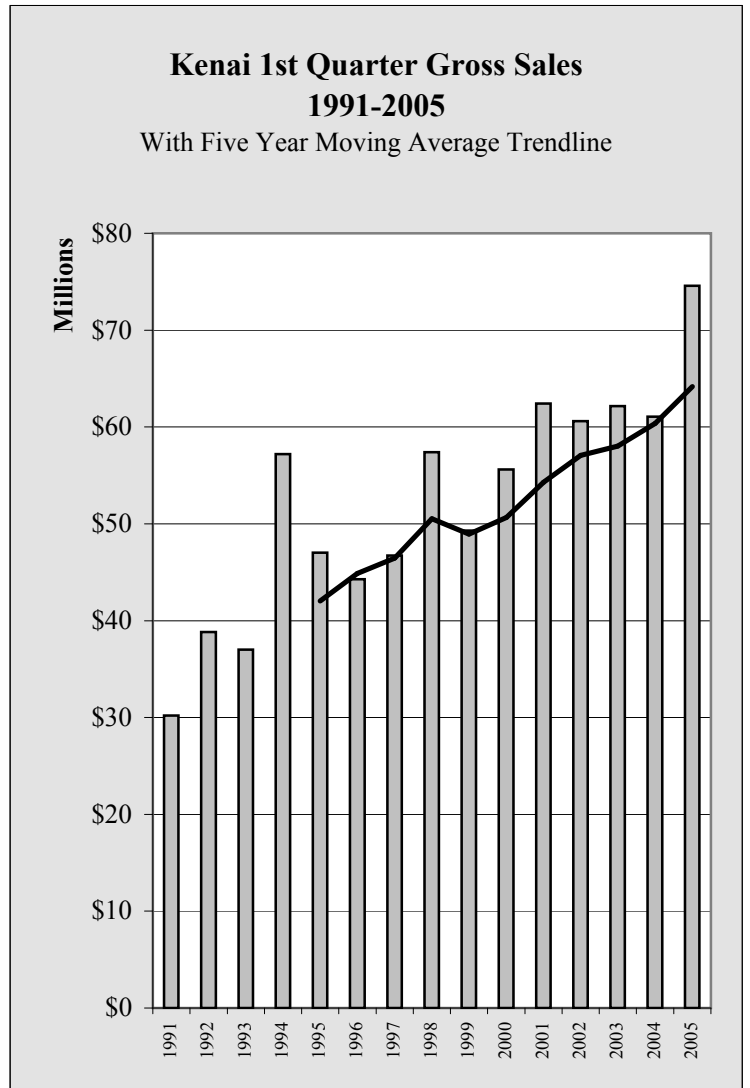


Chart 3.2

Kenai 1st Quarter Taxable Sales by Industry - 1999-2005 - in \$								
	1999	2000	2001	2002	2003	2004	2005	Annual Change
AFF	99,230	79,672	88,262	90,609	87,894	97,275	141,622	45.6%
Min	7,264	30,513	58,812	51,370	34,119	63,827	70,218	10.0%
Const	257,031	234,824	237,187	248,573	242,193	270,414	192,533	-28.8%
Manu	356,148	436,177	437,740	349,360	441,292	508,762	434,079	-14.7%
TCPU	3,587,280	3,661,405	3,398,397	3,779,839	4,932,006	3,939,435	3,890,462	-1.2%
Whole	168,481	182,229	179,452	107,790	79,538	152,309	90,018	-40.9%
Retail	16,109,907	16,163,284	18,137,349	18,685,738	20,062,767	19,316,910	19,538,827	1.1%
FIRE	1,204,578	1,230,731	1,527,679	1,645,401	1,480,683	1,256,343	1,107,224	-11.9%
Service	3,393,873	3,502,478	3,824,363	3,979,662	3,732,984	3,940,716	3,771,696	-4.3%
Govt	105	200	0	0	0	0	0	NA
Total	25,183,897	25,521,513	27,889,241	28,938,342	31,093,476	29,545,991	29,236,679	-1.0%
Annual Change		1.3%	9.3%	3.8%	7.4%	-5.0%	-1.0%	

Table 3.2

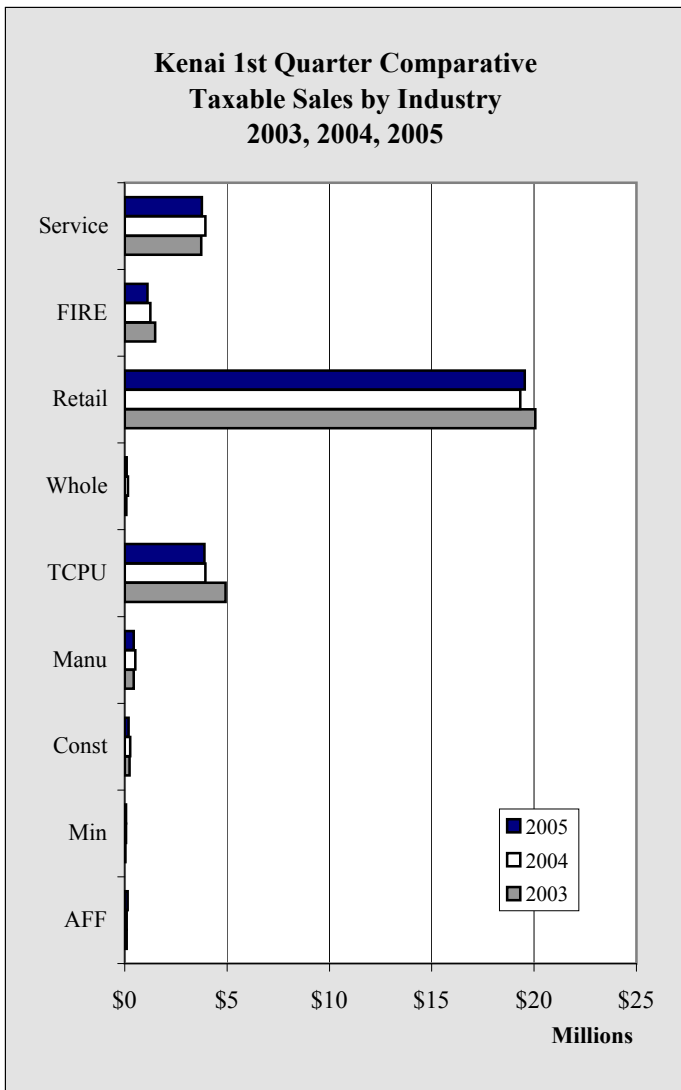


Chart 3.3

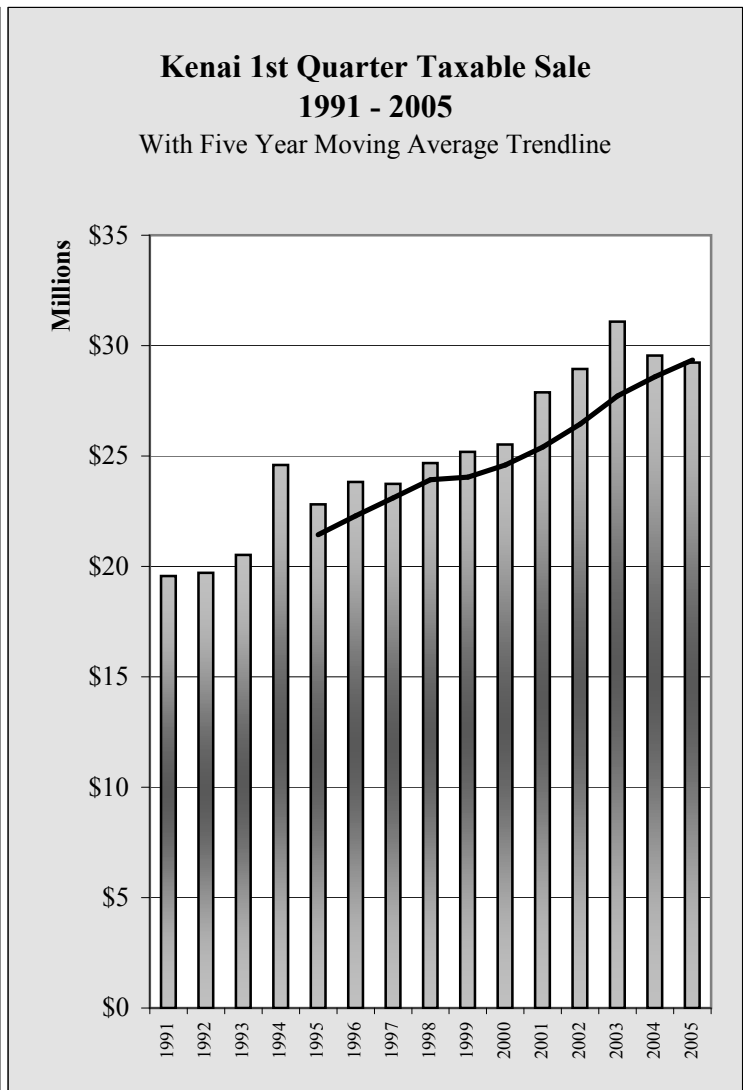


Chart 3.4

Kenai Sales

Kenai Annual Gross Sales by Industry - 1998-2004 - in \$

	1998	1999	2000	2001	2002	2003	2004	Annual Change
AFF	21,856,770	27,031,481	17,757,626	11,304,090	9,488,174	12,584,181	16,349,894	29.9%
Min	208,531	1,424,691	5,507,130	2,507,234	3,916,074	4,915,930	8,727,840	77.5%
Const	21,481,466	20,692,714	17,177,398	24,151,985	18,522,782	30,636,346	12,902,345	-57.9%
Manu	7,526,545	7,854,159	10,445,806	12,646,047	12,496,147	14,994,862	9,506,441	-36.6%
TCPU	23,017,785	26,815,943	23,883,929	24,107,421	27,762,814	24,667,417	29,890,326	21.2%
Whole	10,194,981	10,520,958	17,902,155	19,965,613	17,521,629	19,037,117	187,702,003	886.0%
Retail	149,397,570	133,272,201	145,306,370	164,046,542	134,565,667	119,219,213	146,045,543	22.5%
FIRE	10,300,066	10,463,600	11,935,000	13,853,920	13,529,801	12,784,912	12,915,093	1.0%
Service	36,094,281	32,669,956	33,766,762	37,842,360	41,942,315	44,500,264	45,260,749	1.7%
Govt	1,945	415	288	1,213	0	0	0	NA
Total	280,079,940	270,746,118	283,682,464	310,426,425	279,745,403	283,340,242	469,300,234	65.6%
Annual Change		-3.3%	4.8%	9.4%	-9.9%	1.3%	65.6%	

Table 3.3

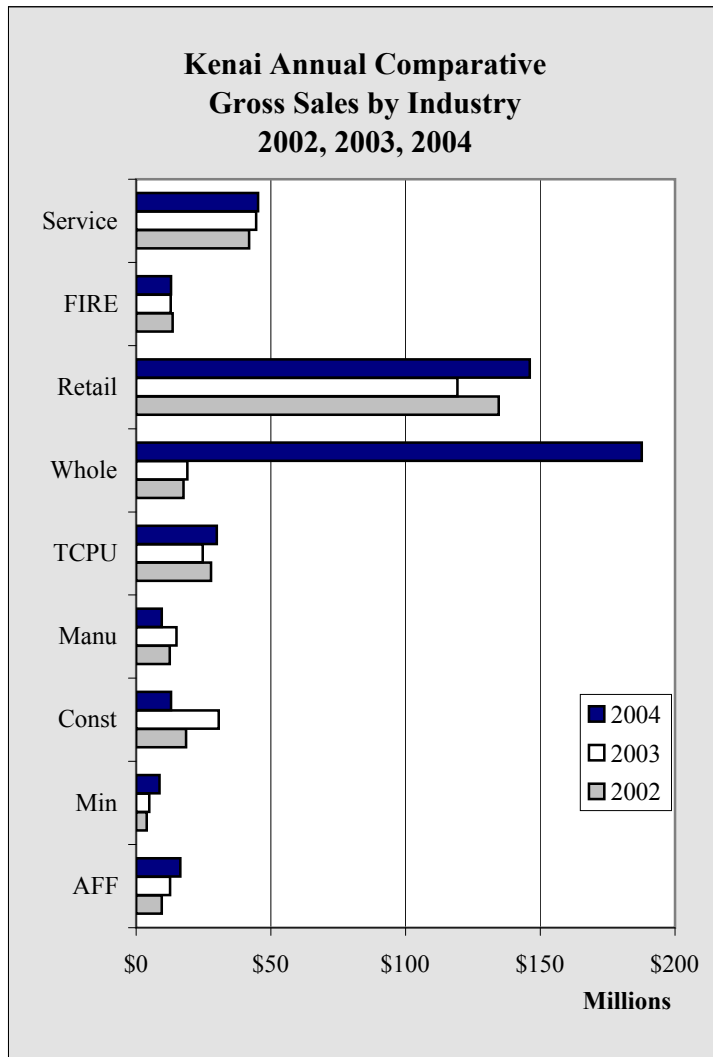


Chart 3.5

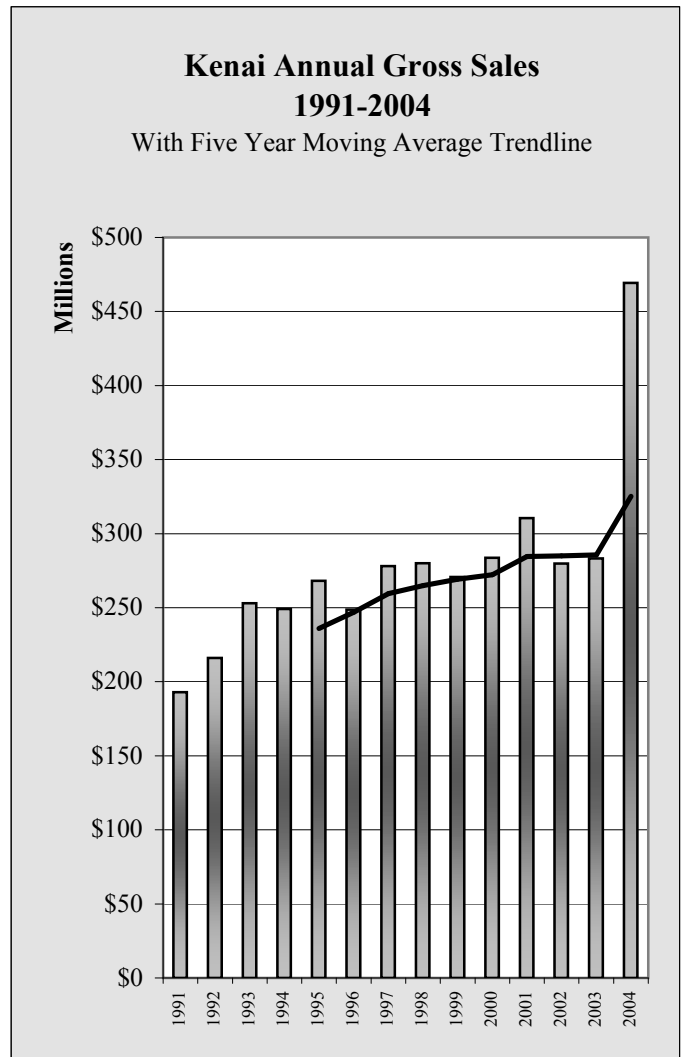


Chart 3.6

Kenai Sales

Kenai Annual Taxable Sales by Industry - 1998-2004 - in \$

	1998	1999	2000	2001	2002	2003	2004	Annual Change
AFF	448,689	513,026	518,603	505,615	505,614	559,313	718,415	28.4%
Min	49,522	96,651	166,846	223,196	213,971	192,718	262,963	36.4%
Const	1,200,303	1,180,607	1,085,964	1,171,924	1,111,101	1,172,308	1,146,165	-2.2%
Manu	2,140,912	2,085,657	2,450,721	2,238,645	2,218,515	2,451,929	2,853,082	16.4%
TCPU	12,899,378	15,330,911	13,458,834	13,192,948	16,120,066	15,890,944	14,094,256	-11.3%
Whole	877,088	829,682	898,759	727,784	517,025	494,254	473,716	-4.2%
Retail	80,814,442	81,828,974	85,347,467	93,226,651	90,195,938	76,153,080	94,195,956	23.7%
FIRE	4,918,254	4,824,067	5,718,387	6,757,340	6,600,246	5,601,342	5,209,124	-7.0%
Service	16,680,181	17,677,101	18,120,257	18,998,608	19,287,134	18,796,331	19,673,769	4.7%
Govt	1,938	415	288	1,213	0	0	0	NA
Total	120,030,707	124,367,091	127,766,126	137,043,924	136,769,610	121,312,219	138,627,446	14.3%
Annual Change		3.6%	2.7%	7.3%	-0.2%	-11.3%	14.3%	

Table 3.4

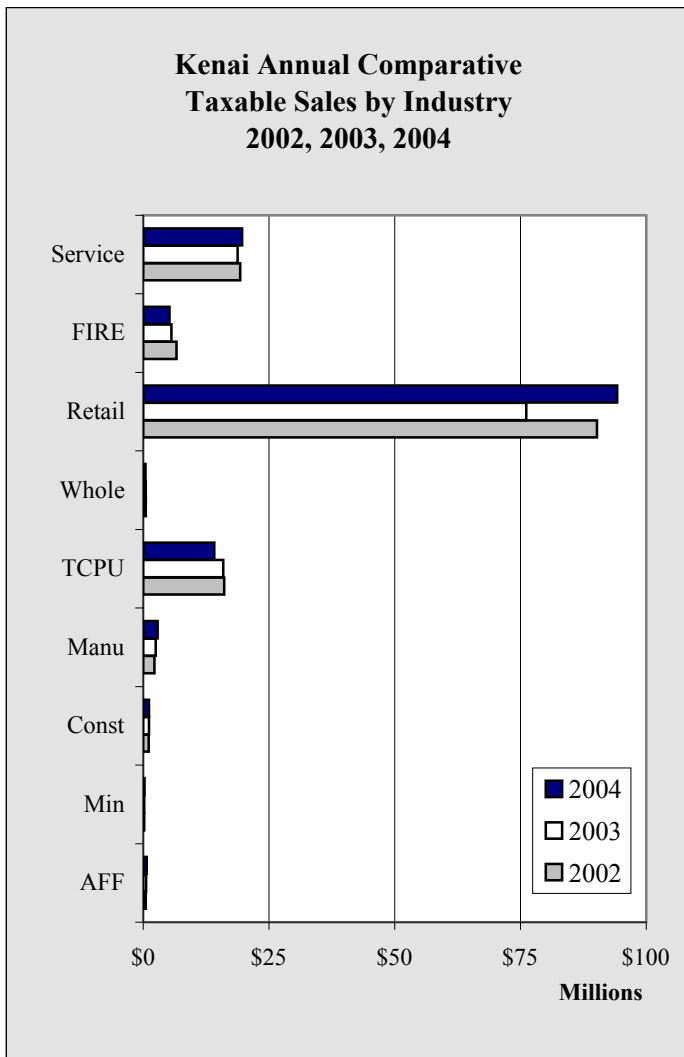


Chart 3.7

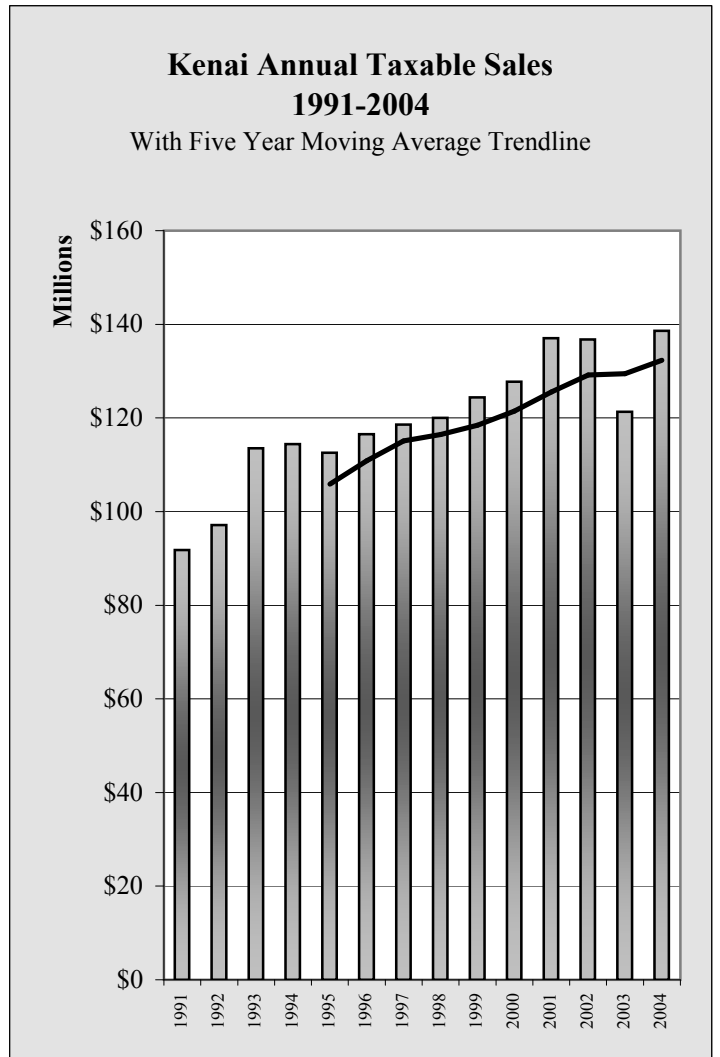


Chart 3.8

Kenai Sales

Kenai Gross Sales by Industry by Quarter - 2002-2005 - in \$					
	1st Quarter	2nd Quarter	3rd Quarter	4th Quarter	Total
2002					
AFF	1,170,314	810,865	7,279,641	227,354	9,488,174
Min	2,214,717	516,408	805,341	379,608	3,916,074
Const	3,777,071	4,295,333	4,991,407	5,458,971	18,522,782
Manu	2,256,153	3,007,187	3,464,827	3,767,980	12,496,147
TCPU	6,416,059	6,155,532	8,070,497	7,120,726	27,762,814
Whole	3,364,888	4,677,095	5,410,024	4,069,622	17,521,629
Retail	28,474,145	34,741,208	36,679,657	34,670,657	134,565,667
FIRE	3,439,155	3,667,615	3,373,799	3,049,232	13,529,801
Service	9,483,867	10,058,048	12,526,446	9,873,954	41,942,315
Govt	0	0	0	0	0
Total	60,596,369	67,929,291	82,601,639	68,618,104	279,745,403
2003					
AFF	1,002,650	838,734	10,272,676	470,121	12,584,181
Min	942,570	872,788	1,517,115	1,583,457	4,915,930
Const	4,115,296	6,454,835	7,865,523	12,200,692	30,636,346
Manu	2,997,006	4,210,293	5,529,544	2,258,019	14,994,862
TCPU	7,714,369	6,152,058	4,859,475	5,941,515	24,667,417
Whole	3,221,739	4,841,740	5,639,800	5,333,838	19,037,117
Retail	30,107,230	28,949,996	30,099,399	30,062,588	119,219,213
FIRE	3,050,602	3,256,374	3,127,817	3,350,119	12,784,912
Service	8,988,895	11,847,481	12,318,427	11,345,461	44,500,264
Govt	0	0	0	0	0
Total	62,140,357	67,424,299	81,229,776	72,545,810	283,340,242
2004					
AFF	1,061,786	1,296,885	12,241,519	1,749,704	16,349,894
Min	2,011,733	2,172,358	2,186,041	2,357,708	8,727,840
Const	2,314,222	2,769,875	3,622,703	4,195,545	12,902,345
Manu	1,610,022	3,062,848	2,757,875	2,075,696	9,506,441
TCPU	6,489,016	5,560,861	11,816,038	6,024,411	29,890,326
Whole	5,349,782	5,842,357	7,155,295	169,354,569	187,702,003
Retail	29,814,280	39,251,887	40,496,449	36,482,927	146,045,543
FIRE	2,864,673	3,219,231	3,430,855	3,400,334	12,915,093
Service	9,556,990	11,101,534	14,133,524	10,468,701	45,260,749
Govt	0	0	0	0	0
Total	61,072,504	74,277,836	97,840,299	236,109,595	469,300,234
2005					
					Year to Date
AFF	1,613,553				1,613,553
Min	2,243,621				2,243,621
Const	1,901,453				1,901,453
Manu	1,676,345				1,676,345
TCPU	20,301,148				20,301,148
Whole	4,968,831				4,968,831
Retail	30,440,005				30,440,005
FIRE	2,536,399				2,536,399
Service	8,905,923				8,905,923
Govt	0				0
Total	74,587,278				74,587,278

Table 3.5

Kenai Sales

Kenai Taxable Sales by Industry by Quarter - 2002-2005 - in \$					
	1st Quarter	2nd Quarter	3rd Quarter	4th Quarter	Total
2002					
AFF	90,609	128,556	200,238	86,211	505,614
Min	51,370	57,479	52,898	52,224	213,971
Const	248,573	273,401	292,612	296,515	1,111,101
Manu	349,360	622,875	754,966	491,314	2,218,515
TCPU	3,779,839	3,794,883	4,235,801	4,309,543	16,120,066
Whole	107,790	146,986	138,933	123,316	517,025
Retail	18,685,738	22,876,325	24,650,115	23,983,760	90,195,938
FIRE	1,645,401	1,684,226	1,706,454	1,564,165	6,600,246
Service	3,979,662	5,064,834	6,160,963	4,081,675	19,287,134
Govt	0	0	0	0	0
Total	28,938,342	34,649,565	38,192,980	34,988,723	136,769,610
2003					
AFF	87,894	134,783	237,344	99,292	559,313
Min	34,119	46,723	51,411	60,465	192,718
Const	242,193	295,969	316,506	317,640	1,172,308
Manu	441,292	687,335	816,883	506,419	2,451,929
TCPU	4,932,006	4,056,076	3,270,630	3,632,232	15,890,944
Whole	79,538	111,864	145,387	157,465	494,254
Retail	20,062,767	18,246,087	19,174,865	18,669,361	76,153,080
FIRE	1,480,683	1,494,804	1,373,022	1,252,833	5,601,342
Service	3,732,984	4,727,913	5,965,690	4,369,744	18,796,331
Govt	0	0	0	0	0
Total	31,093,476	29,801,554	31,351,738	29,065,451	121,312,219
2004					
AFF	97,275	159,363	351,638	110,139	718,415
Min	63,827	57,575	75,540	66,021	262,963
Const	270,414	294,583	308,561	272,607	1,146,165
Manu	508,762	803,910	1,023,087	517,323	2,853,082
TCPU	3,939,435	3,467,903	3,197,445	3,489,473	14,094,256
Whole	152,309	127,610	109,725	84,072	473,716
Retail	19,316,910	25,145,460	26,970,841	22,762,745	94,195,956
FIRE	1,256,343	1,345,408	1,362,338	1,245,035	5,209,124
Service	3,940,716	4,853,058	6,633,379	4,246,616	19,673,769
Govt	0	0	0	0	0
Total	29,545,991	36,254,870	40,032,554	32,794,031	138,627,446
2005					
	Year to Date				
AFF	141,622				141,622
Min	70,218				70,218
Const	192,533				192,533
Manu	434,079				434,079
TCPU	3,890,462				3,890,462
Whole	90,018				90,018
Retail	19,538,827				19,538,827
FIRE	1,107,224				1,107,224
Service	3,771,696				3,771,696
Govt	0				0
Total	29,236,679				29,236,679

Table 3.6