

KPB Employment

Employment data are acquired from the Alaska Department of Labor and Workforce Development (AK DOLWD) as reported by administrative personnel of each business. When administrative headquarters of a business is located in a specific area, all employees of that business are reported as being employed in that area, resulting in skewed employment data.

Government employees include federal, state, borough and local government as well as public school and state university employees. Employees of both Central Peninsula General Hospital in Soldotna and South Peninsula General Hospital in Homer are included in government data because they are managed by the KPB.

The AK DOLWD updates employment data regularly as information trickles in and adjustments are made. Data varies in quarterly reports as corrected reports are received or delinquent reports are filed and included in totals. Self-employed workers, fishers, domestics and unpaid family workers are excluded from these data due to exemption from certain reporting requirements.

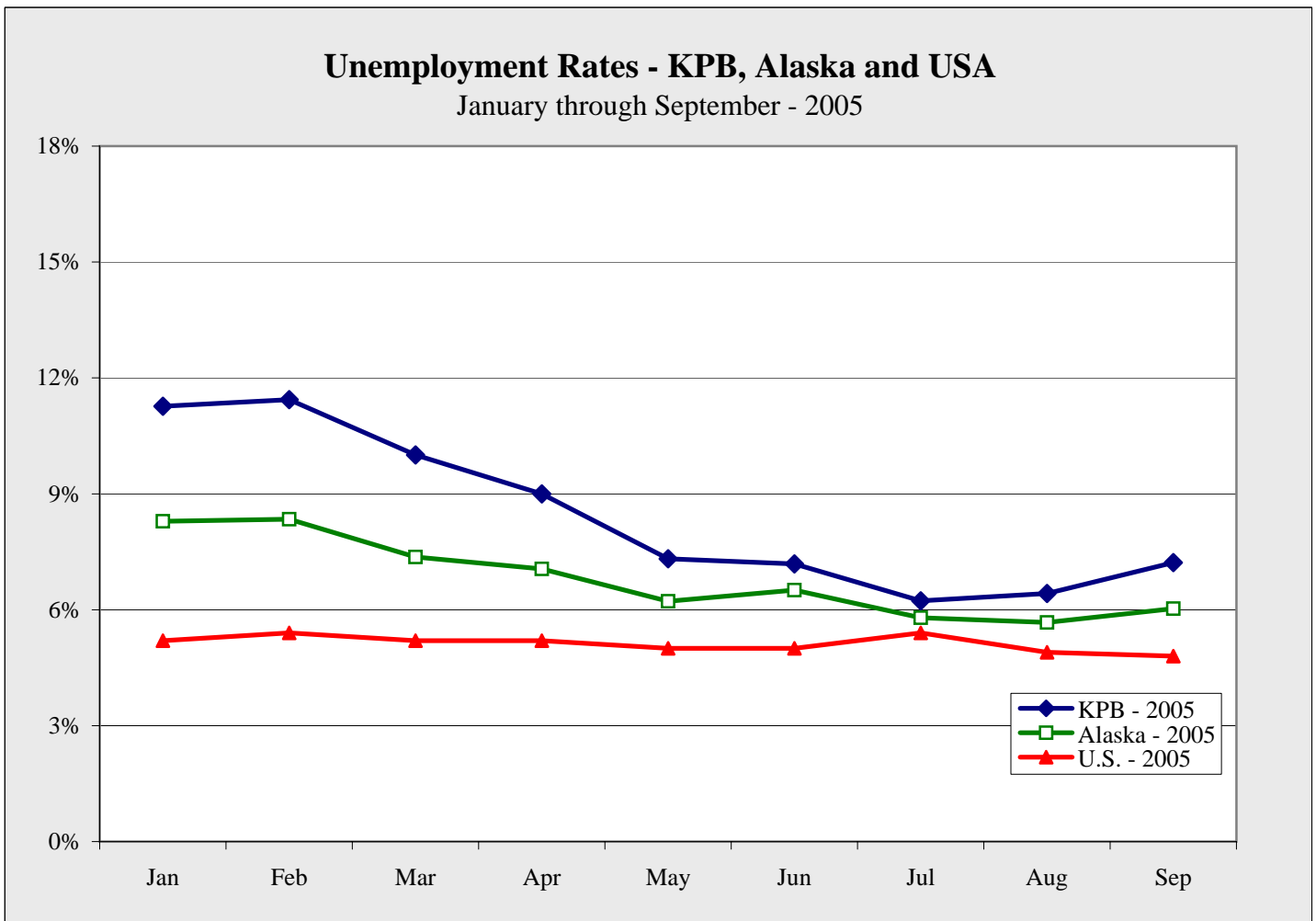


Chart 1.43

KPB Employment

KPB Labor Force by Month - 2003-2005

	Jan	Feb	Mar	Apr	May	Jun	Jul	Aug	Sep	Oct	Nov	Dec	Avg
2003	24,298	24,108	24,243	24,379	25,394	26,781	27,170	26,352	24,571	24,028	23,988	23,875	24,932
2004	23,874	24,000	24,130	24,130	25,302	27,119	27,599	26,342	24,958	24,334	24,116	23,981	24,990
2005	23,873	24,157	24,295	24,749	25,830	27,354	27,932	26,552	25,377				

Table 1.53

KPB Comparative Labor Force by Month - YTD 2003, 2004, 2005

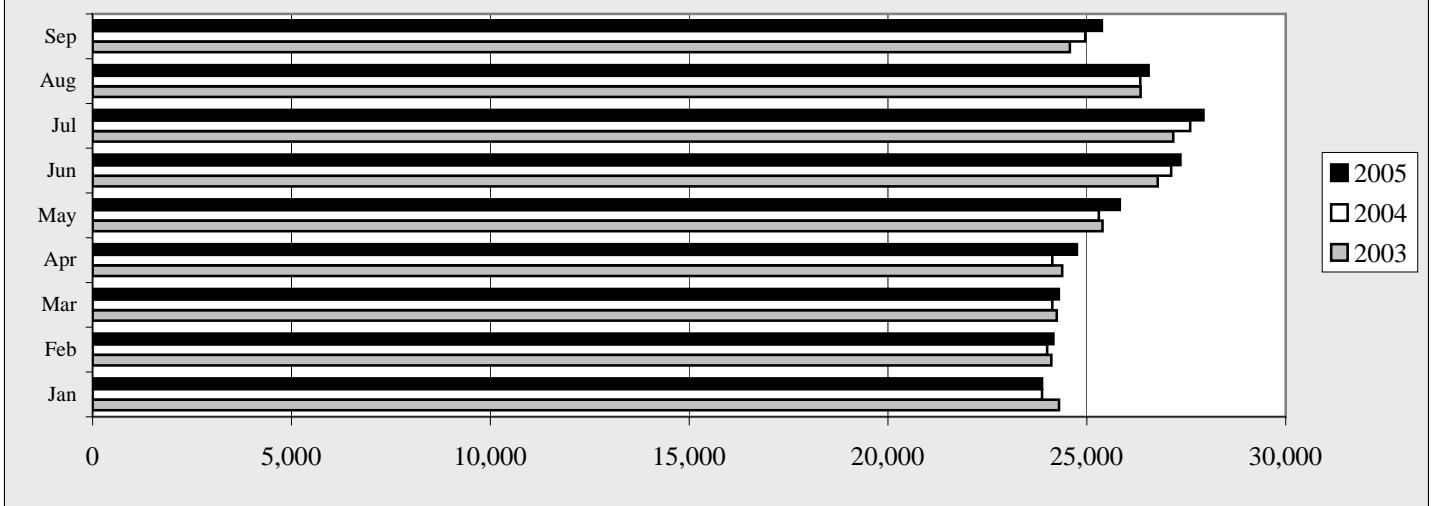


Chart 1.44

KPB Unemployment by Month - 2003-2005

	Jan	Feb	Mar	Apr	May	Jun	Jul	Aug	Sep	Oct	Nov	Dec	Avg
2003	2,935	3,048	2,795	2,564	2,345	2,542	2,169	2,122	2,126	2,301	2,508	2,636	2,508
2004	2,956	2,969	2,897	2,508	2,272	2,419	2,033	1,956	1,971	2,129	2,309	2,429	2,404
2005	2,690	2,763	2,431	2,227	1,891	1,966	1,740	1,705	1,832				

Table 1.54

KPB Comparative Unemployment by Month - YTD 2003, 2004, 2005

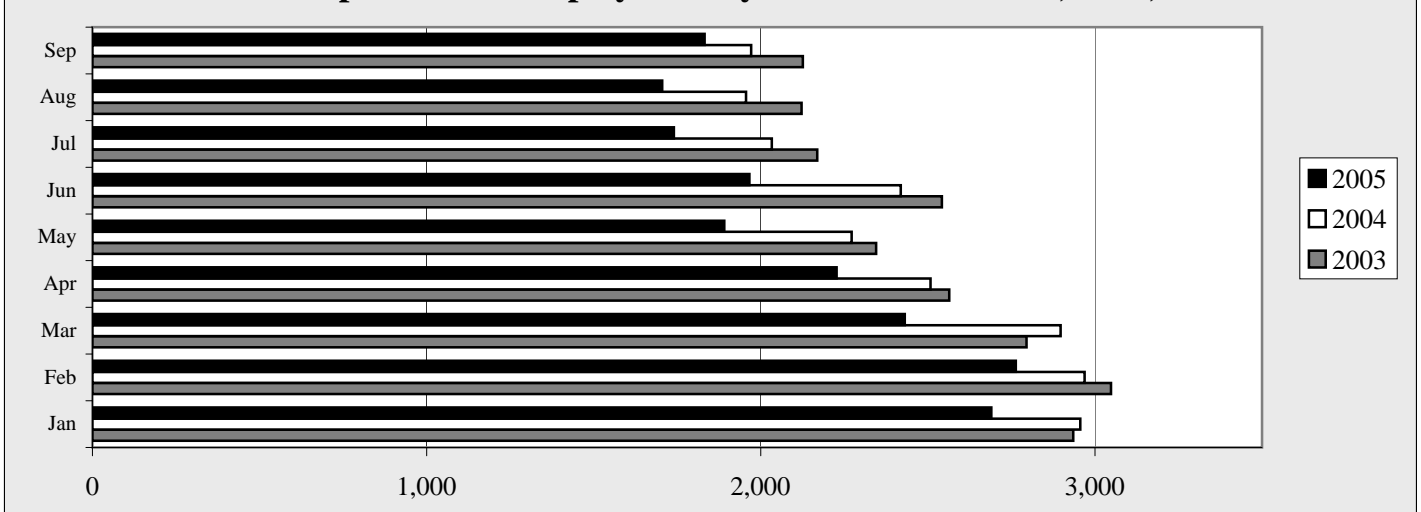


Chart 1.45

KPB Employment

Unemployment Rates by Month - 2003-2005

	Jan	Feb	Mar	Apr	May	Jun	Jul	Aug	Sep	Oct	Nov	Dec	Avg
2003	12.1%	12.6%	11.5%	10.5%	9.2%	9.5%	8.0%	8.1%	8.7%	9.6%	10.5%	11.0%	10.1%
2004	12.4%	12.4%	12.0%	10.4%	9.0%	8.9%	7.4%	7.4%	7.9%	8.7%	9.6%	10.1%	9.7%
2005	11.3%	11.4%	10.0%	9.0%	7.3%	7.2%	6.2%	6.4%	7.2%				

Table 1.55

KPB Comparative Unemployment Rates - 2003, 2004, 2005

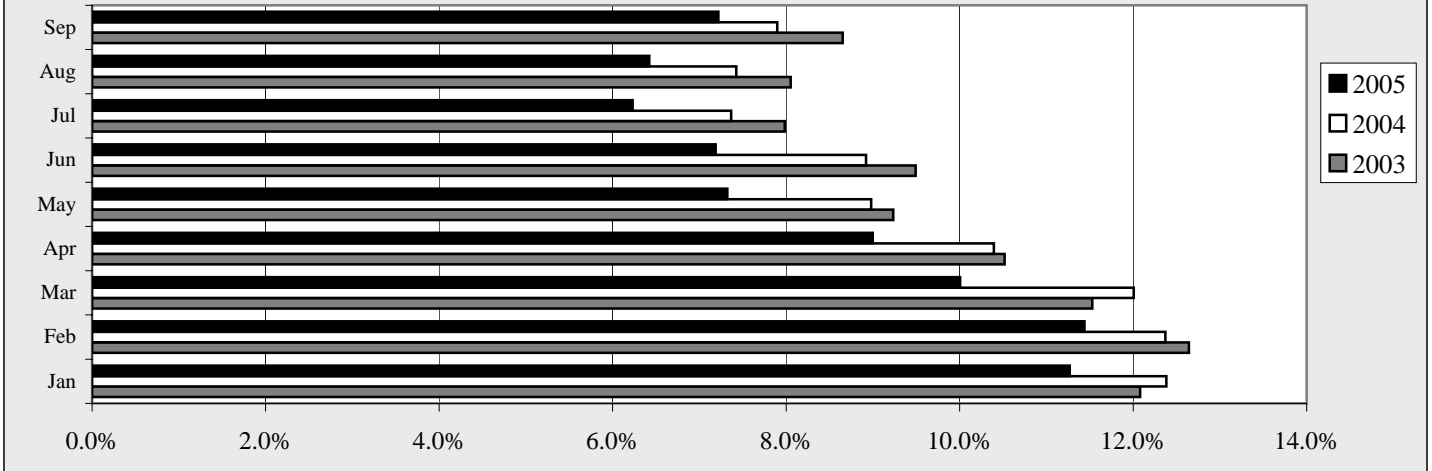


Chart 1.46

Employment by Month - 2003-2005

	Jan	Feb	Mar	Apr	May	Jun	Jul	Aug	Sep	Oct	Nov	Dec	Avg
2003	21,363	21,060	21,448	21,815	23,049	24,239	25,001	24,230	22,445	21,727	21,480	21,239	22,425
2004	20,918	21,031	21,233	21,622	23,030	24,700	25,566	24,386	22,987	22,205	21,807	21,552	22,586
2005	21,183	21,394	21,864	22,522	23,939	25,388	26,192	24,847	23,545				

Table 1.56

KPB Comparative Employment by Month - 2003, 2004, 2005

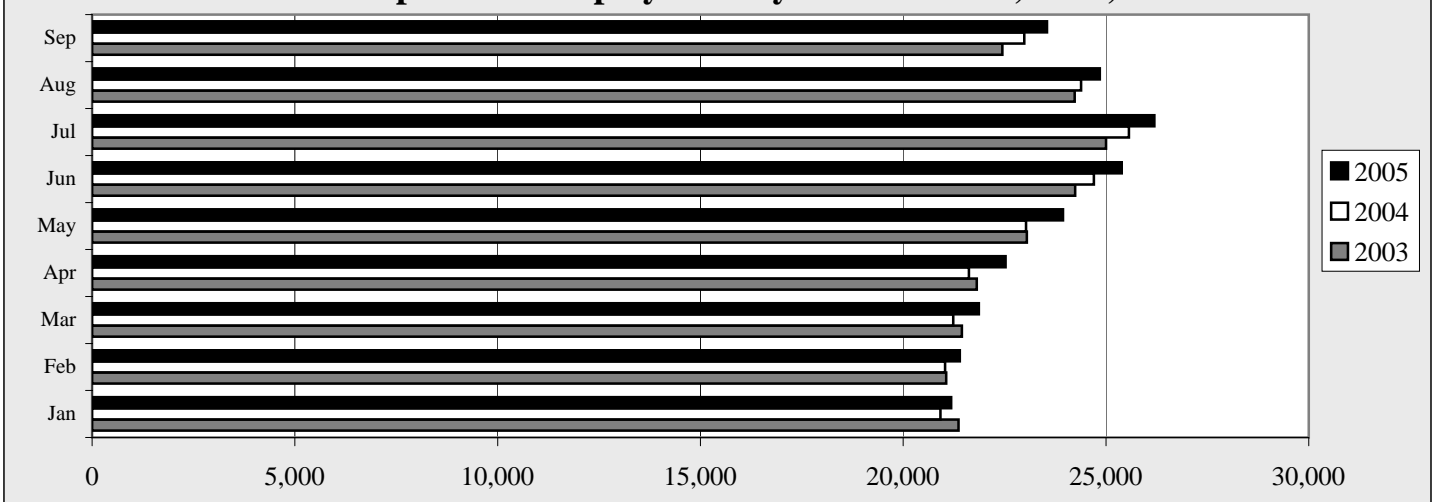


Chart 1.47