

Economy of the Kenai Peninsula Borough

with a focus on

The City of Soldotna

Presented to the

Soldotna Chamber of Commerce

February 12, 2008

by

Jeanne Camp
KPB Economic Analyst

John J. Williams
Kenai Peninsula Borough Mayor



Discussion Topics



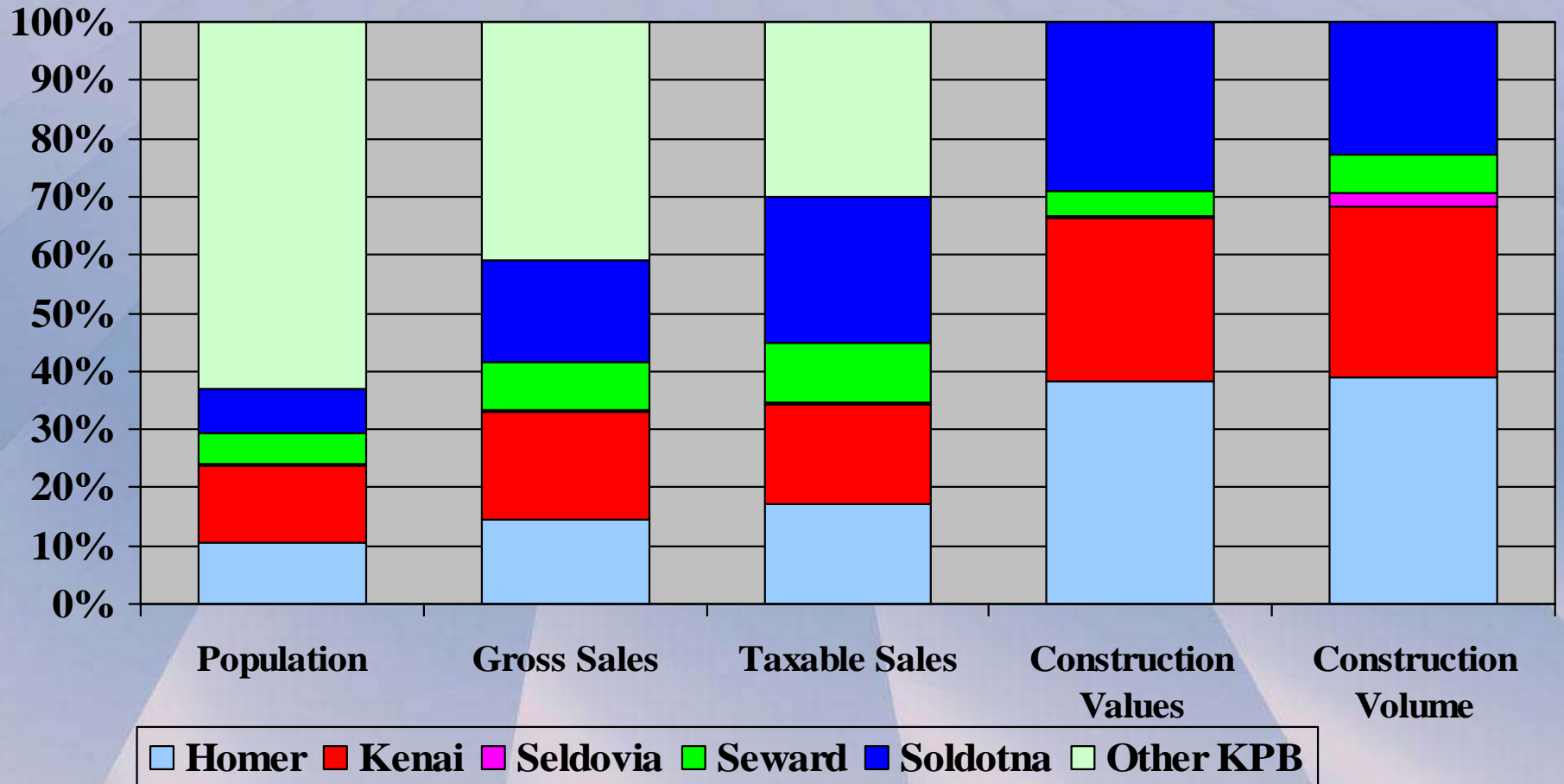
Demographics

Sales

Property Issues

Employment

Share of the 2006 Kenai Peninsula Borough Economy



Population/Demographics



Population of Economic Impact Areas - 2006

Greater Soldotna – 13,422

Clam Gulch.....	165
Cohoe.....	1,260
Funny River.....	729
Kalifornsky.....	6,914
Kasilof.....	547
Soldotna	3,807

Greater Kenai – 13,910

Kenai.....	6,864
Nikiski.....	4,179
Ridgeway.....	1,961
Salamatof.....	906

Treat separately – 6,177

Cooper Landing -	357
Ninilchik -	784
Sterling –	5,036

KPB Total 51,350

Greater Seward – 4,989

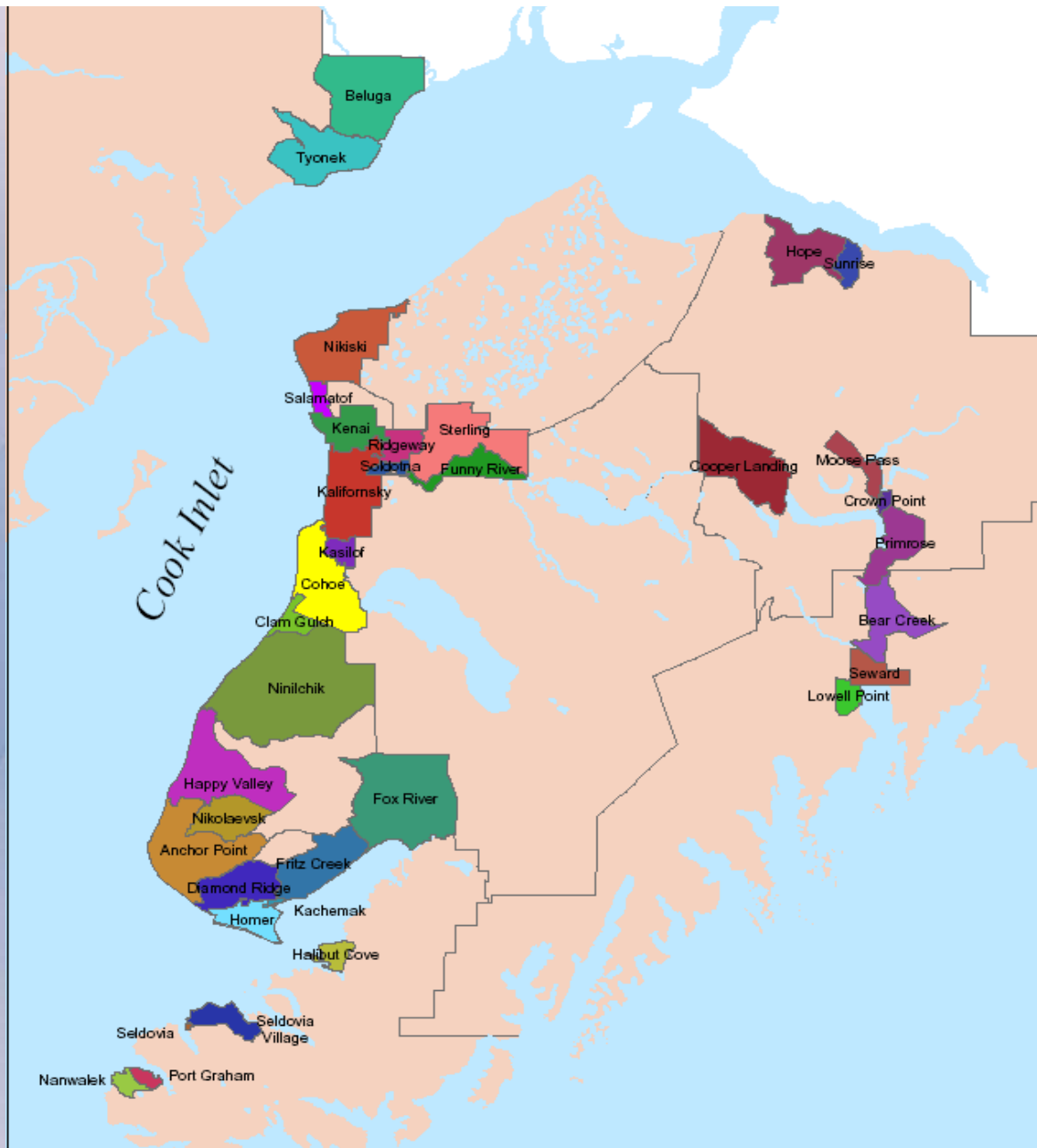
Bear Creek.....	1,922
Crown Point.....	81
Lowell Point.....	76
Moose Pass.....	204
Primrose.....	79
Seward.....	2,627

Greater Homer – 12,303

Anchor Point.....	1,803
Diamond Ridge.....	690
Fritz Creek.....	1,723
Fox River.....	639
Halibut Cove.....	24
Happy Valley.....	472
Homer.....	5,454
Kachemak City.....	458
Nanwalek.....	228
Nikolaevsk.....	297
Port Graham.....	136
Seldovia.....	379

Others - 549

Beluga -	21
Hope -	143
Sunrise -	22
Tyonek –	199
At Large -	164

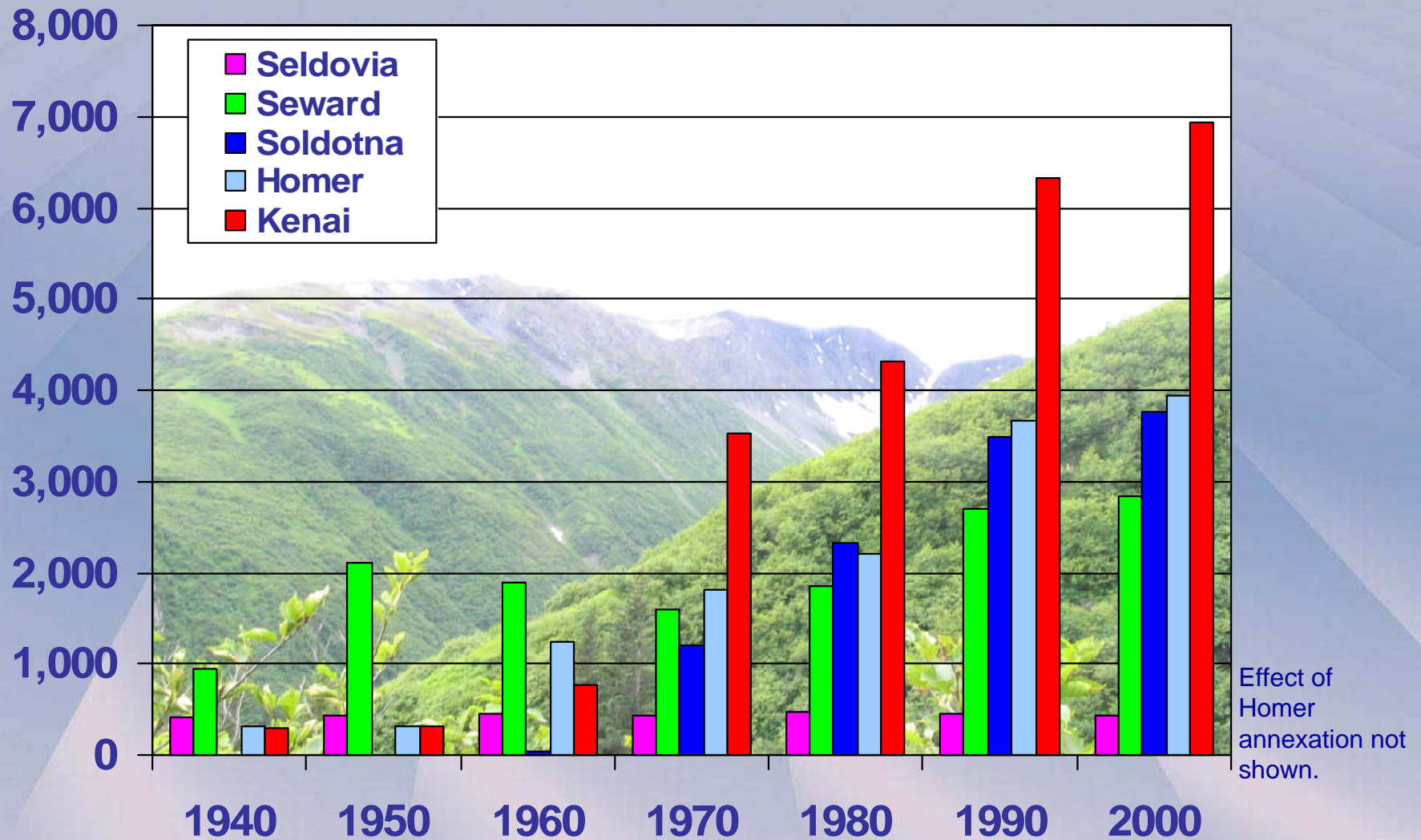


KENAI PENINSULA BOROUGH CENSUS DESIGNATED PLACES

Source – KPB
GIS Department

Population Growth by Census

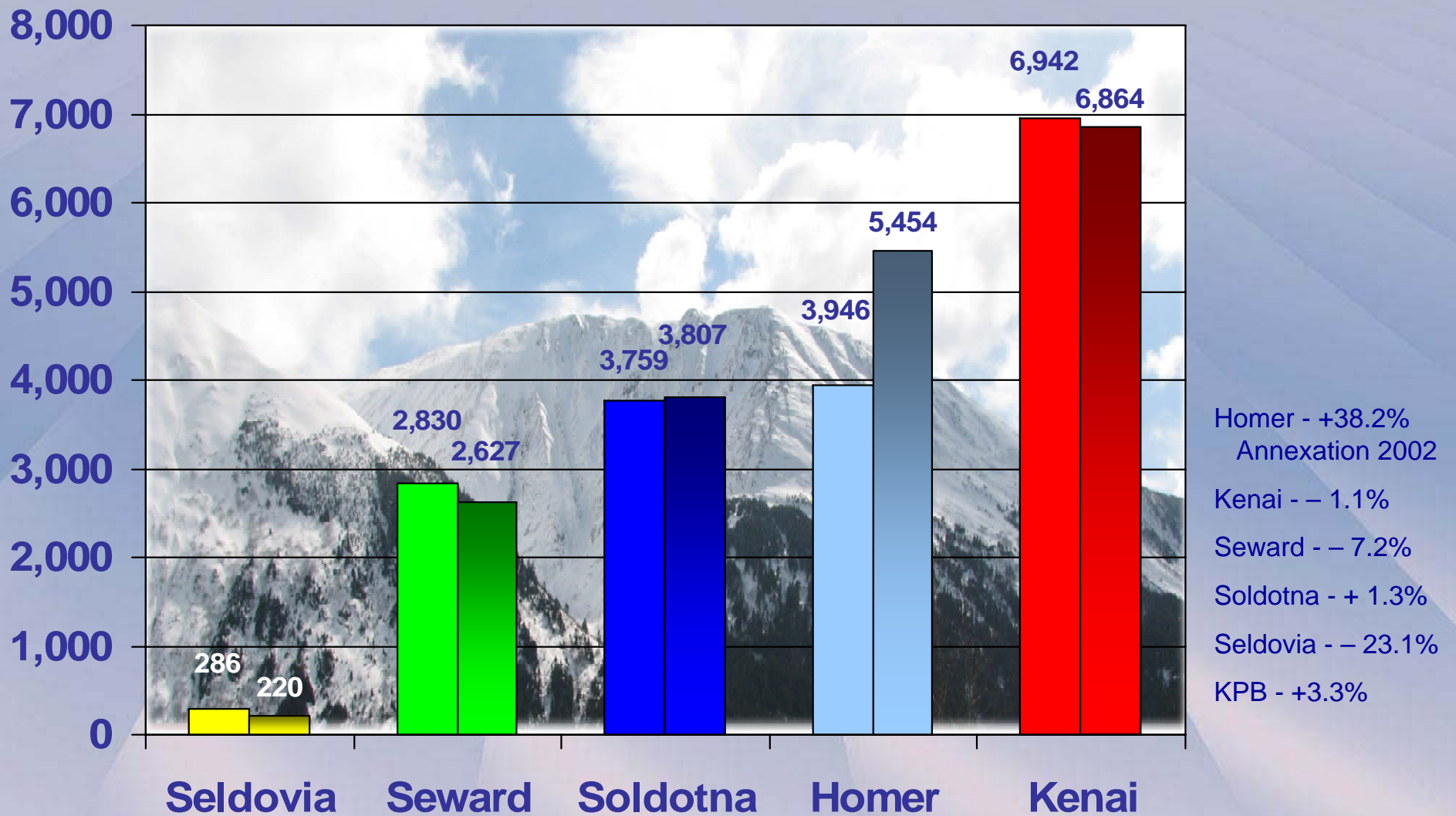
1990-2000 – Homer, Kenai, Seward, Soldotna



Source – United States Census Bureau

Population Change

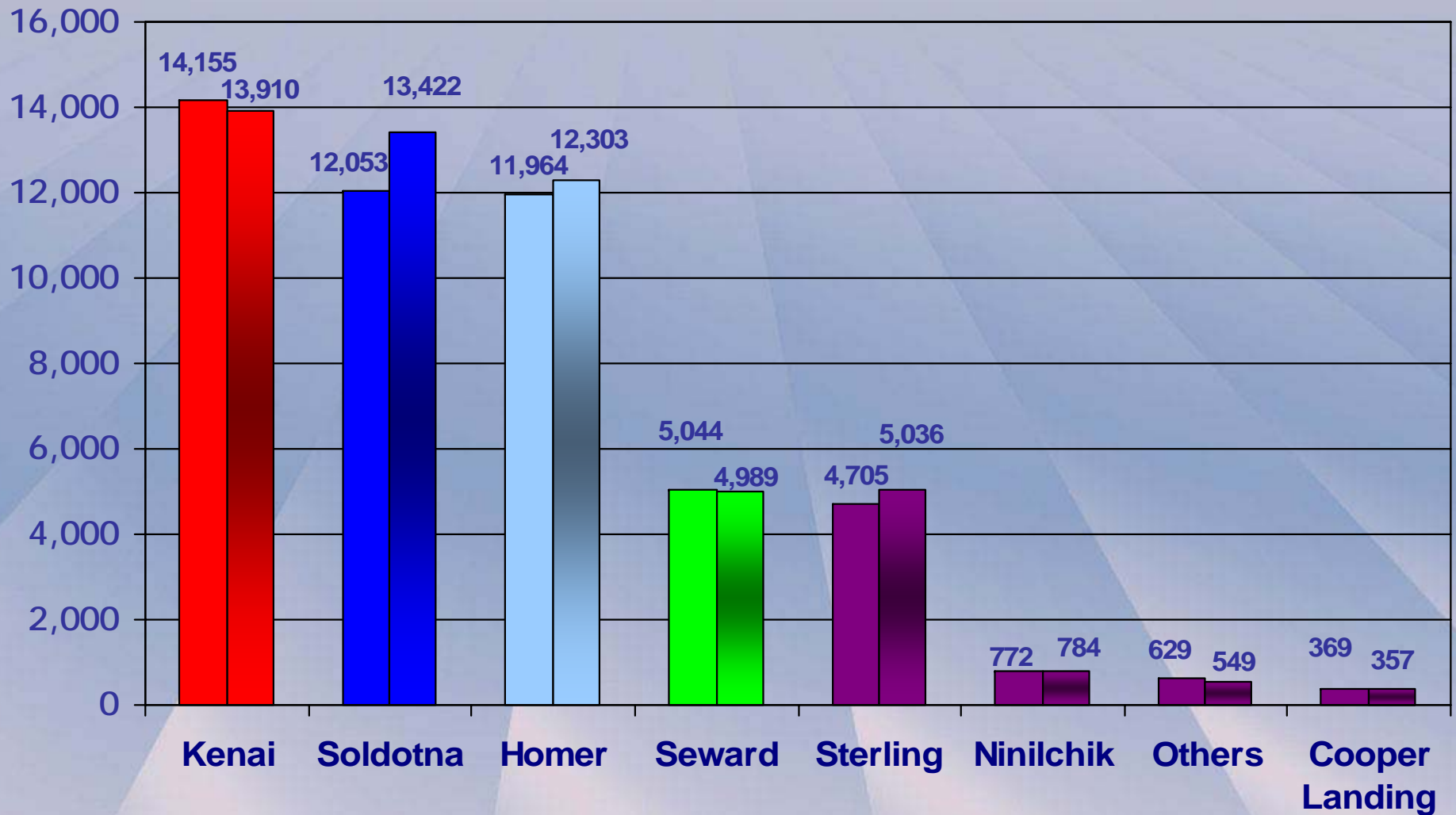
Census 2000 (Bold), Estimate 2006 (Shaded)



Source – United States Census Bureau, Alaska Department of Labor and Workforce Development

Population Estimates of Impact Area

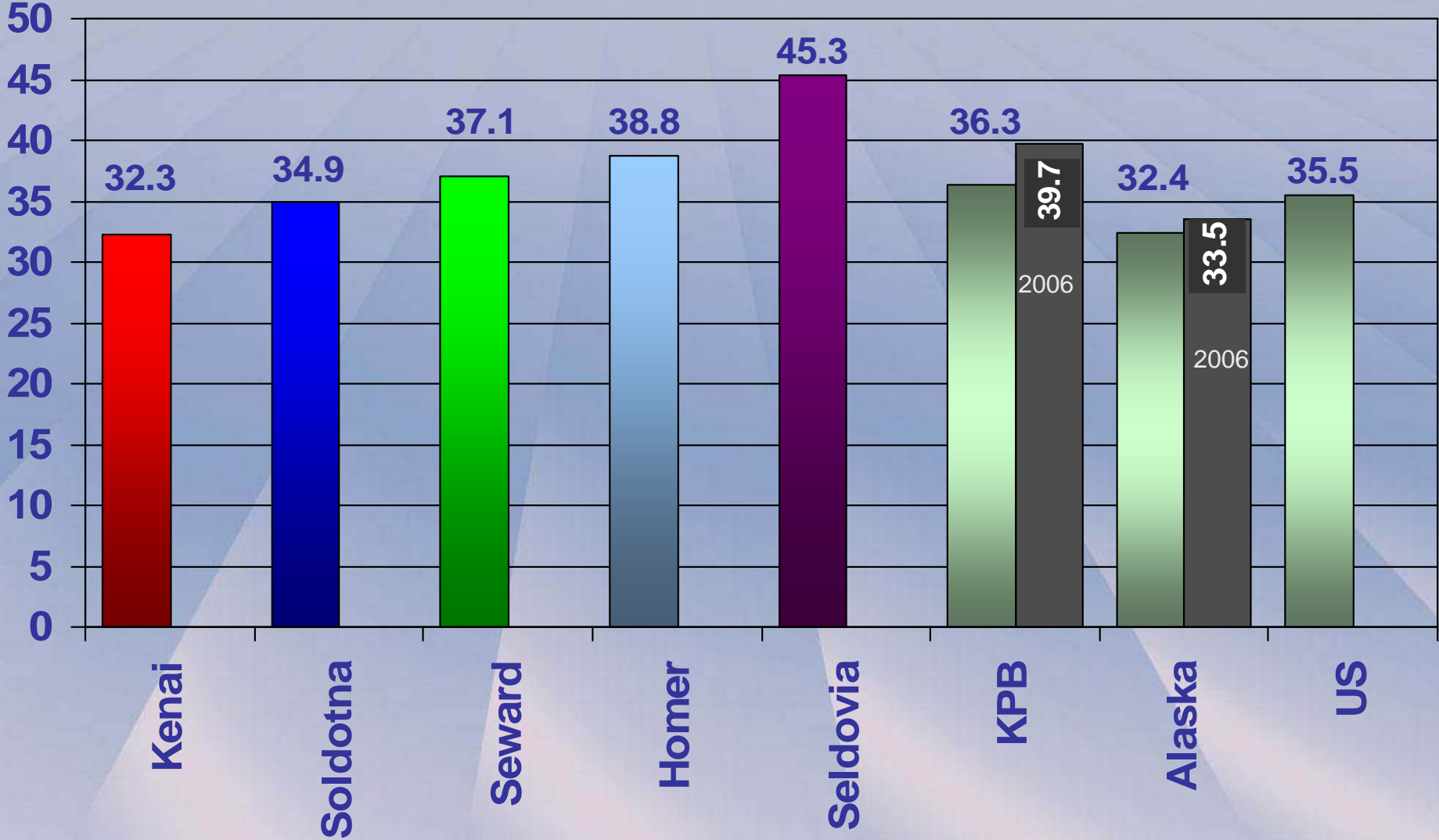
2000 (Bold) v 2006 (Shaded)



Source – United States Census Bureau, Alaska Department of Labor and Workforce Development

Median Age - Census 2000

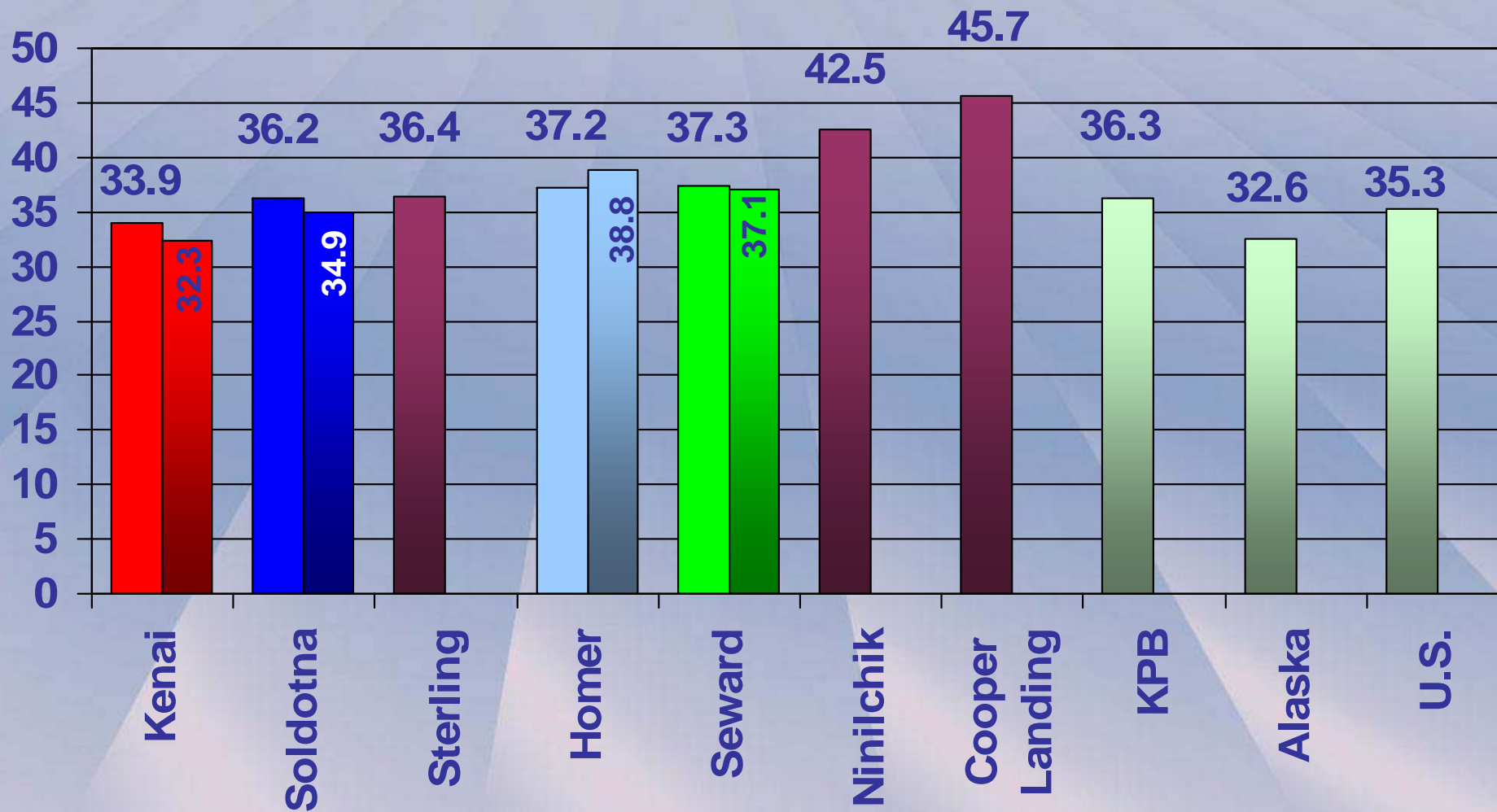
2006 – KPB, Alaska



Source – United States Census Bureau, Alaska Department of Labor and Workforce Development

Median Age of Economic Impact Area

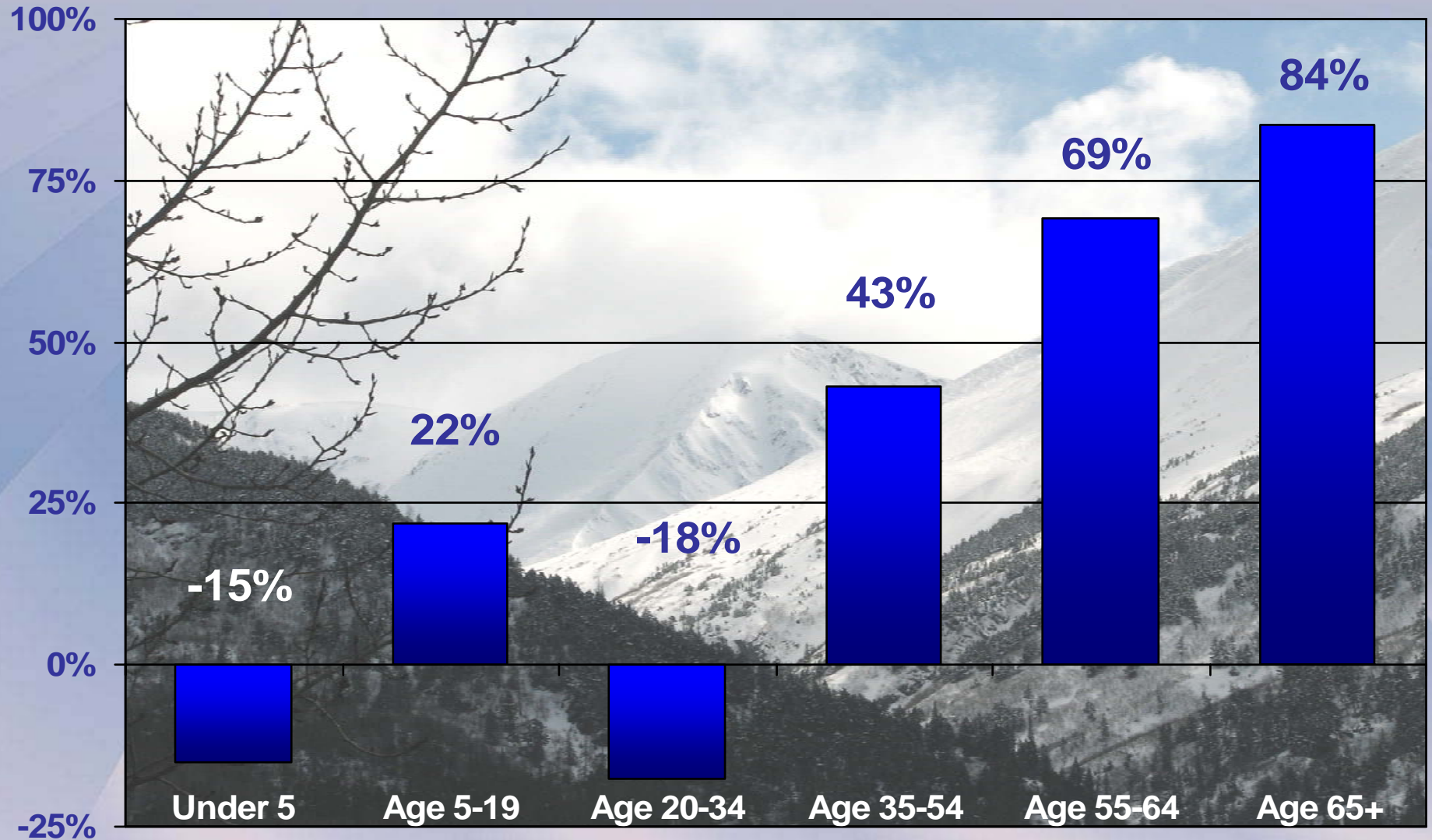
Compared to City Alone (Shaded) - Census 2000



Source – United States Census Bureau, Alaska Department of Labor and Workforce Development

KPB Population Change by Age Cohort

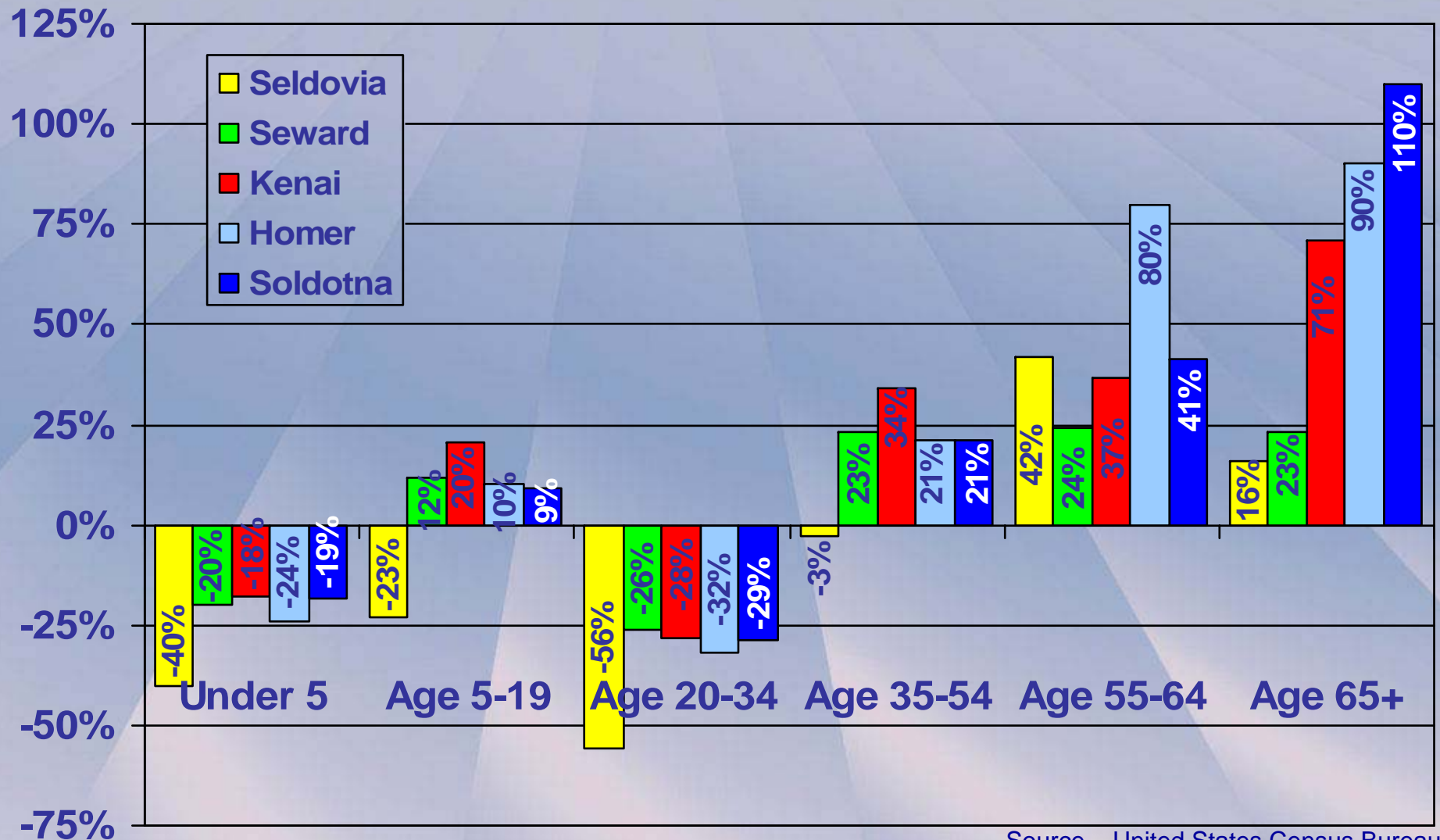
Census 1990 to Census 2000



Source – United States Census Bureau

Percentage Change by Age Cohort

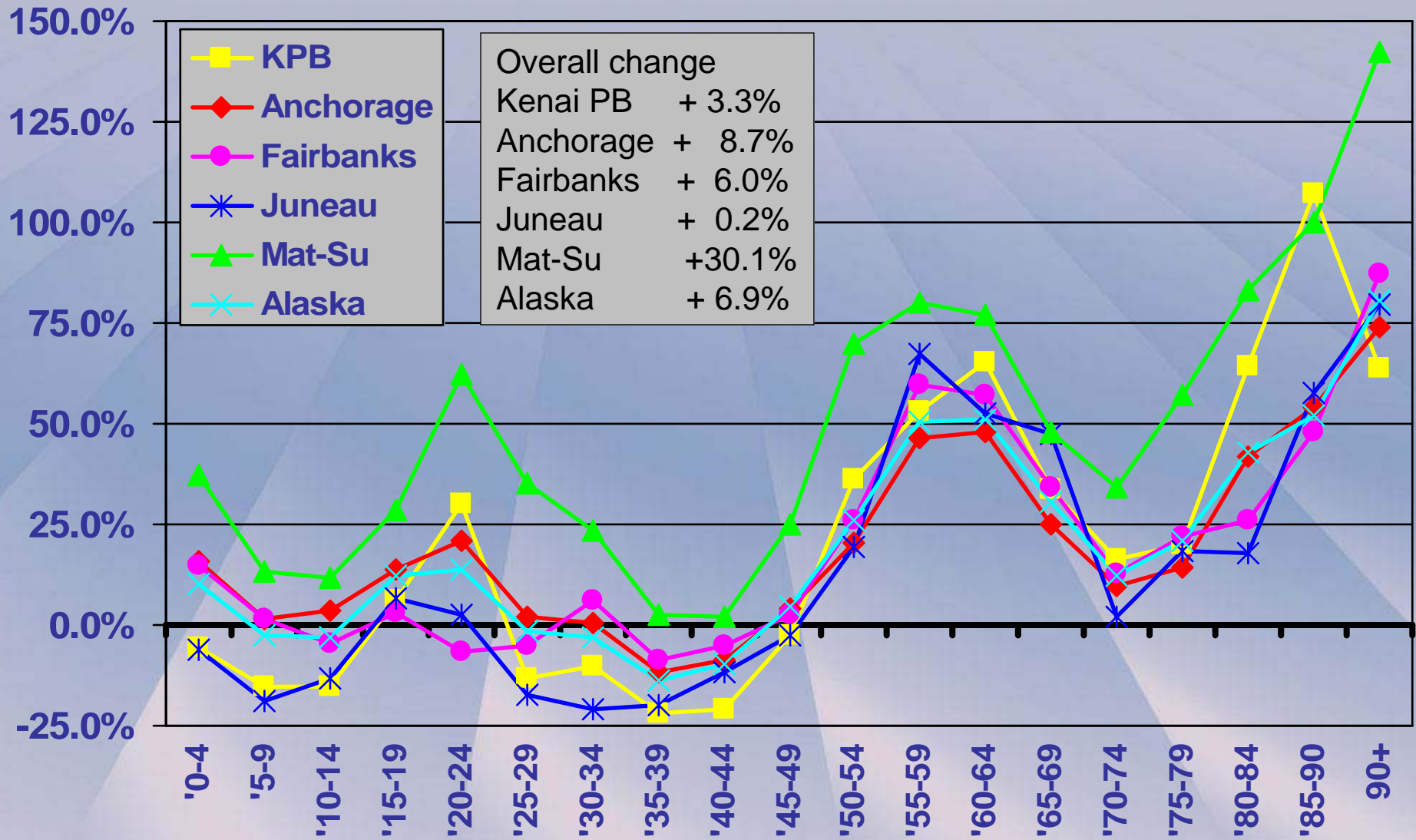
Cities - Census 1990 to Census 2000



Source – United States Census Bureau

Major Boroughs of Alaska

Percentage Change by Age Cohort – 2000-2006



Source – United States Census Bureau

Age, Education, Income, Poverty – by City

Census 2000

	Homer	Kenai	Seldovia	Seward	Soldotna	KPB
Total Population	3,946	<u>6,942</u>	<u>286</u>	2,830	3,759	49,691
Median Age	38.8	<u>32.3</u>	<u>45.3</u>	37.1	34.9	36.3
Bachelor's Degree + (over 25 years of age)	<u>18.5%</u>	16.0%	16.4%	<u>10.1%</u>	15.5%	20.3%
Individuals in Poverty	9.3%	9.8%	7.9%	<u>10.6%</u>	<u>6.6%</u>	10.0%
Median Family Income	\$53,571	\$56,856	<u>\$58,000</u>	\$54,904	<u>\$52,372</u>	\$54,106
Median Household Income	<u>\$42,821</u>	\$45,962	\$45,313	\$44,306	<u>\$48,420</u>	\$46,397
Per Capita Income	\$21,823	\$20,789	<u>\$23,669</u>	<u>\$20,360</u>	\$21,740	\$20,949

Source – United States Census Bureau

Income Source by City – Census 2000

	Homer	Kenai	Seldovia	Seward	Soldotna	KPB
Total Households in Area	1,581	<u>2,668</u>	<u>129</u>	914	1,409	18,438
Households With Earnings	84.9%	<u>86.9%</u>	<u>80.6%</u>	84.9%	85.3%	85.4%
Mean Earnings	\$49,127	\$50,527	<u>\$47,577</u>	\$49,842	<u>\$52,771</u>	\$51,932
Households w/ Soc Security Income	19.7%	18.0%	<u>25.6%</u>	<u>16.1%</u>	20.9%	18.3%
Households With Pub Assist Income	8.5%	<u>15.8%</u>	<u>5.4%</u>	11.4%	11.8%	10.2%
Households With Retirement Income	16.9%	<u>11.2%</u>	<u>18.6%</u>	15.9%	17.6%	15.5%
Mean Retirement Income	\$19,730	\$17,256	<u>\$23,763</u>	\$19,011	<u>\$16,151</u>	\$21,872
Median Income Male Full Time Year Around	\$38,062	<u>\$48,371</u>	\$41,250	<u>\$36,900</u>	\$43,162	\$44,106
Median Income Female Full Time Year Around	\$30,494	27,112	<u>\$33,750</u>	\$30,508	<u>\$24,598</u>	\$28,107

Source – United States Census Bureau

Sales

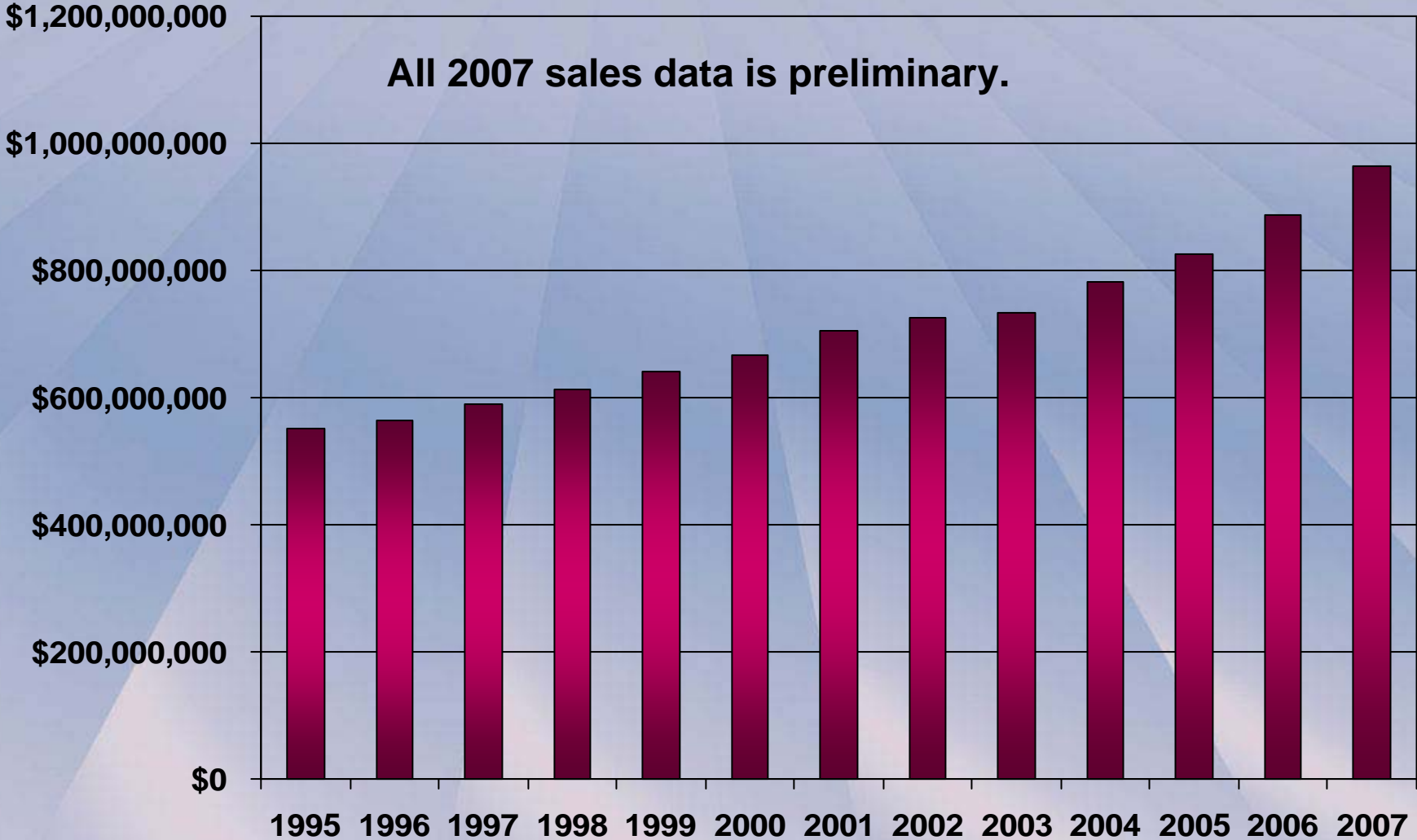


Taxable Sales

KPB Sales Exempt from Sales Tax Assessments:

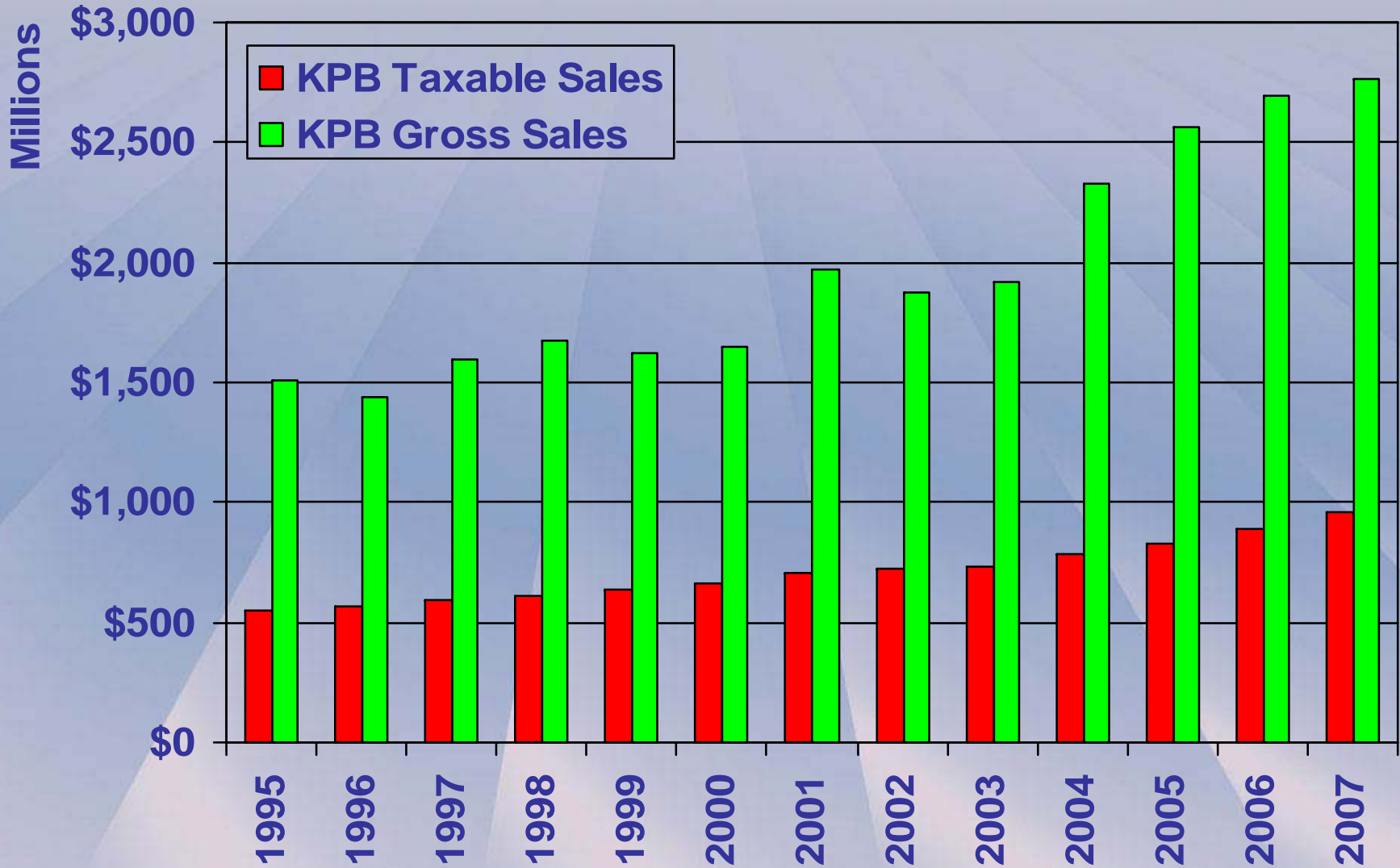
- Sales outside the borough;
- Sales for resale;
- Sales to government agencies;
- Sales to tax exempt organizations; and
- Sales in excess of \$500.

KPB Taxable Sales



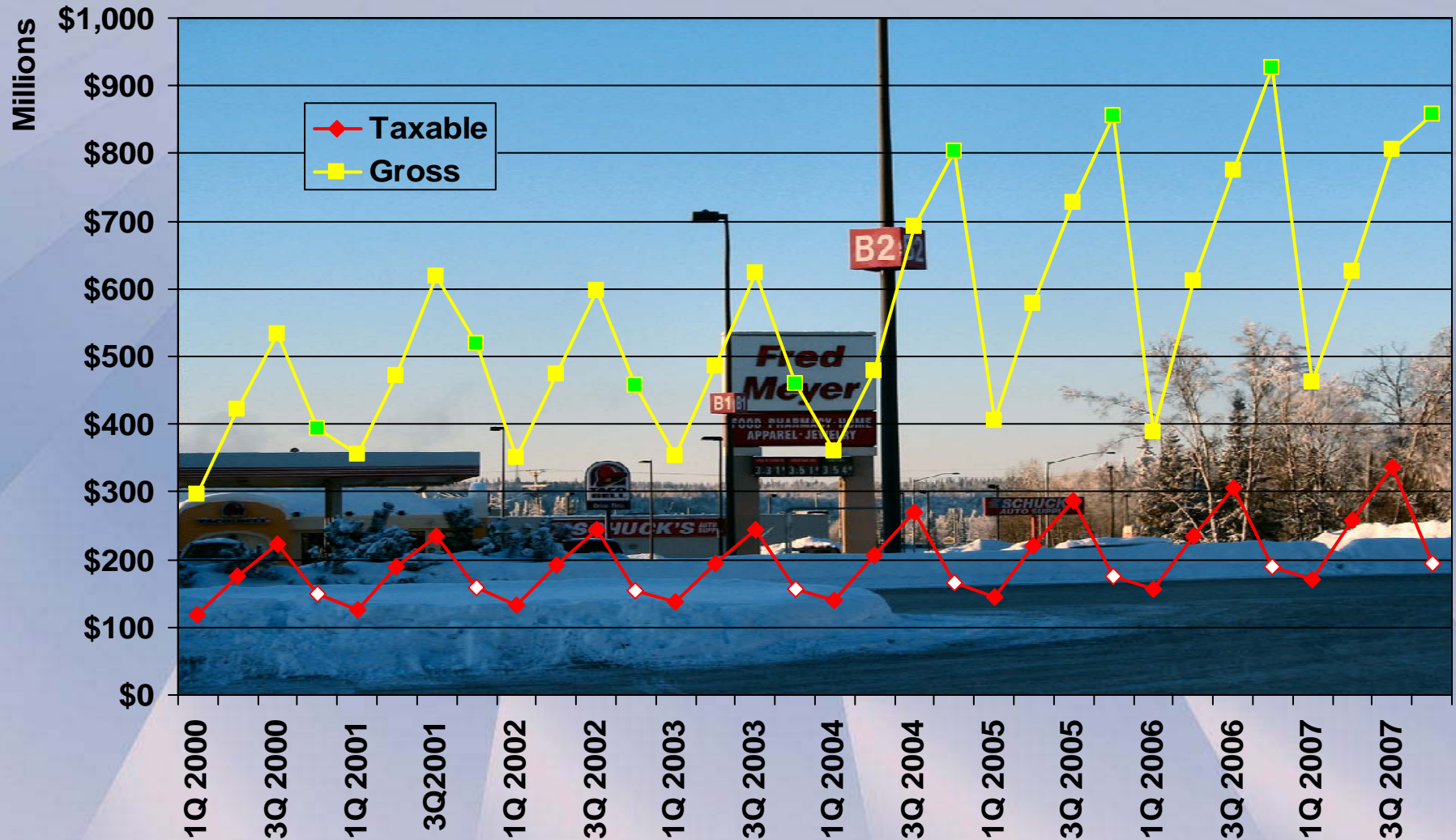
Source – KPB Finance Department, Sales Tax Division

KPB Sales



Source – KPB Finance Department, Sales Tax Division

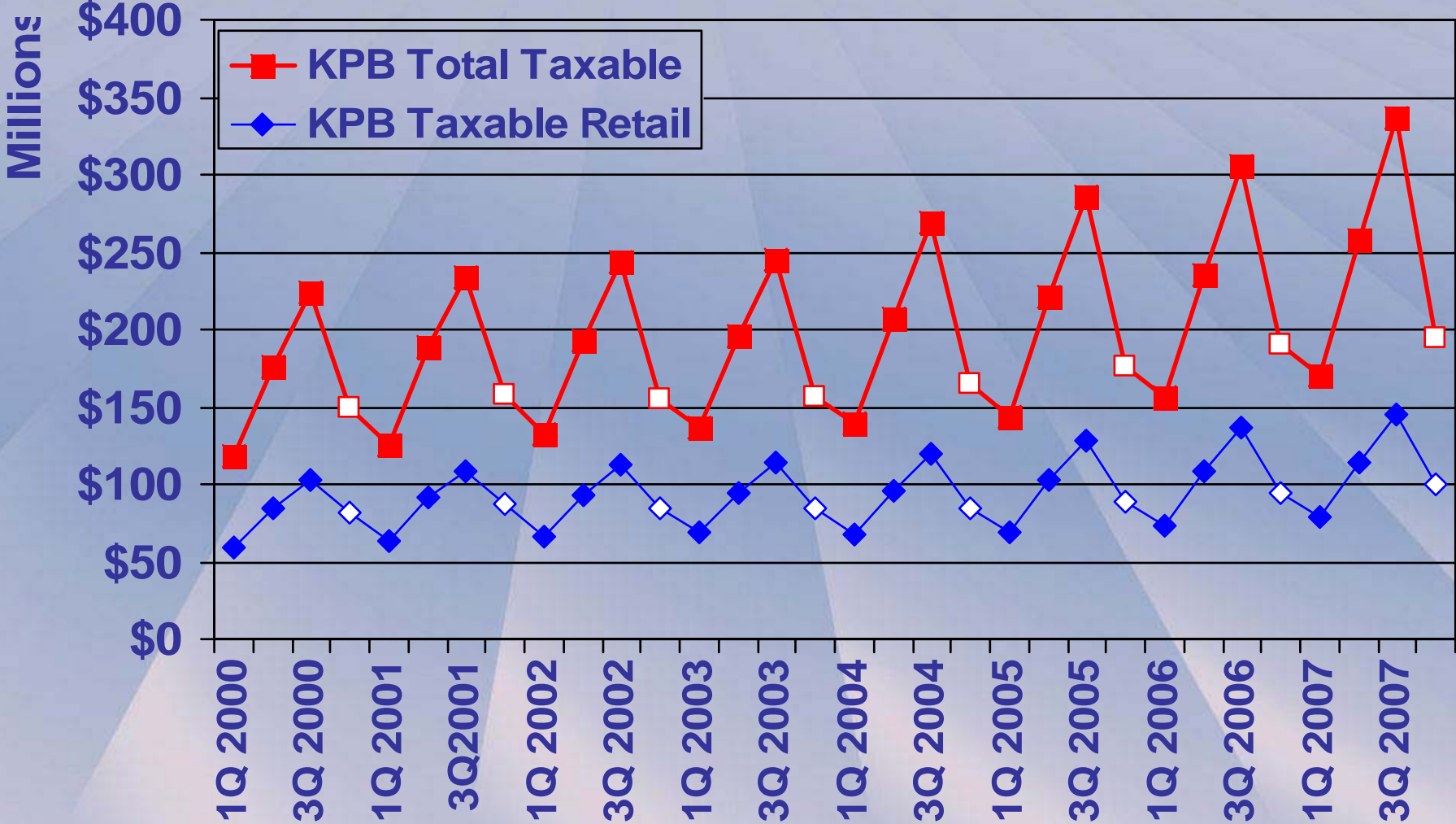
KPB Gross and Taxable Sales by Quarter



Source – KPB Finance Department, Sales Tax Division

KPB Taxable Sales – Retail as a Portion

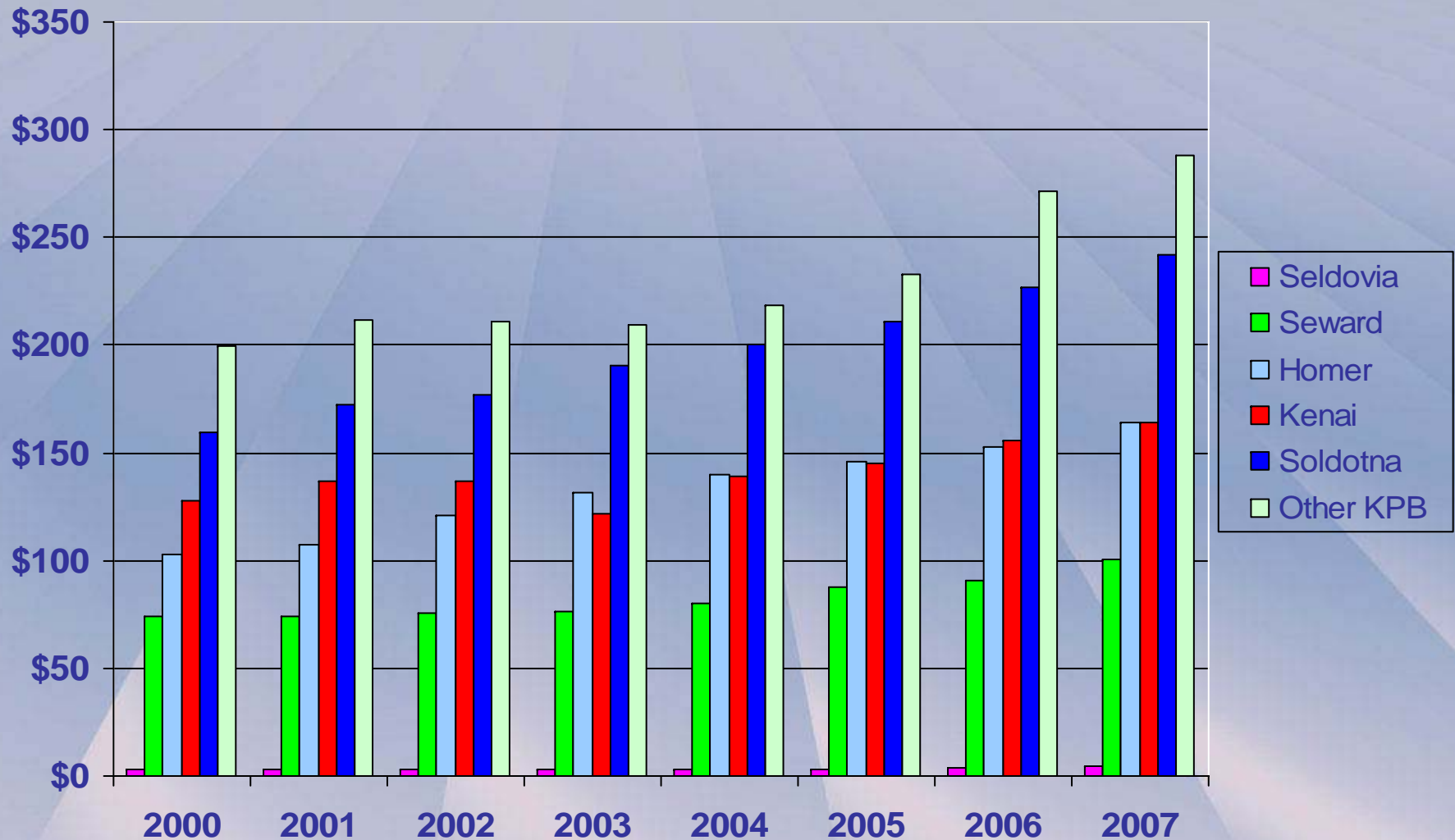
2000-2006 (2007 1Q) NAICS



Source – KPB Finance Department, Sales Tax Division

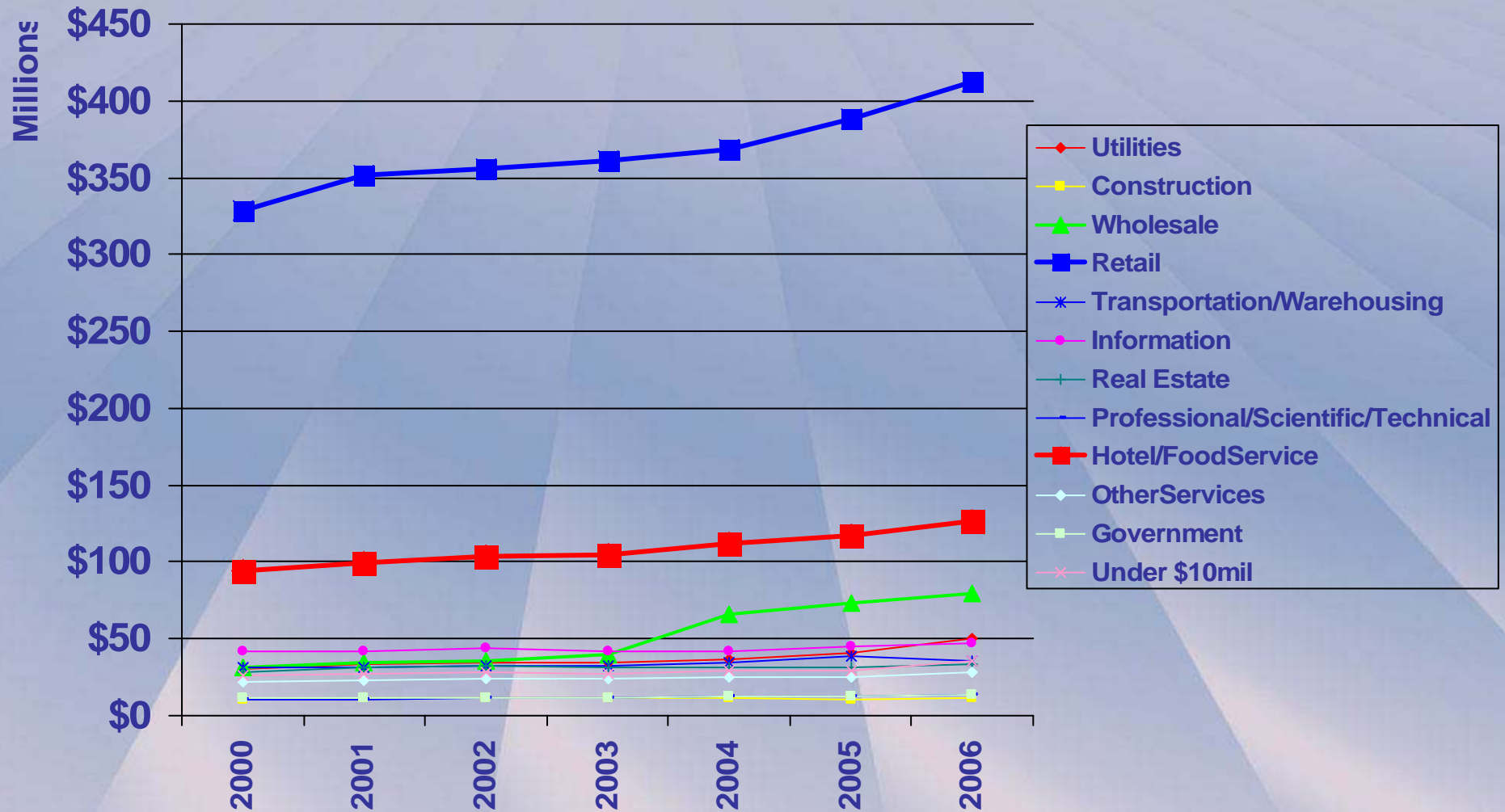
Taxable Sales by Area

in Millions \$



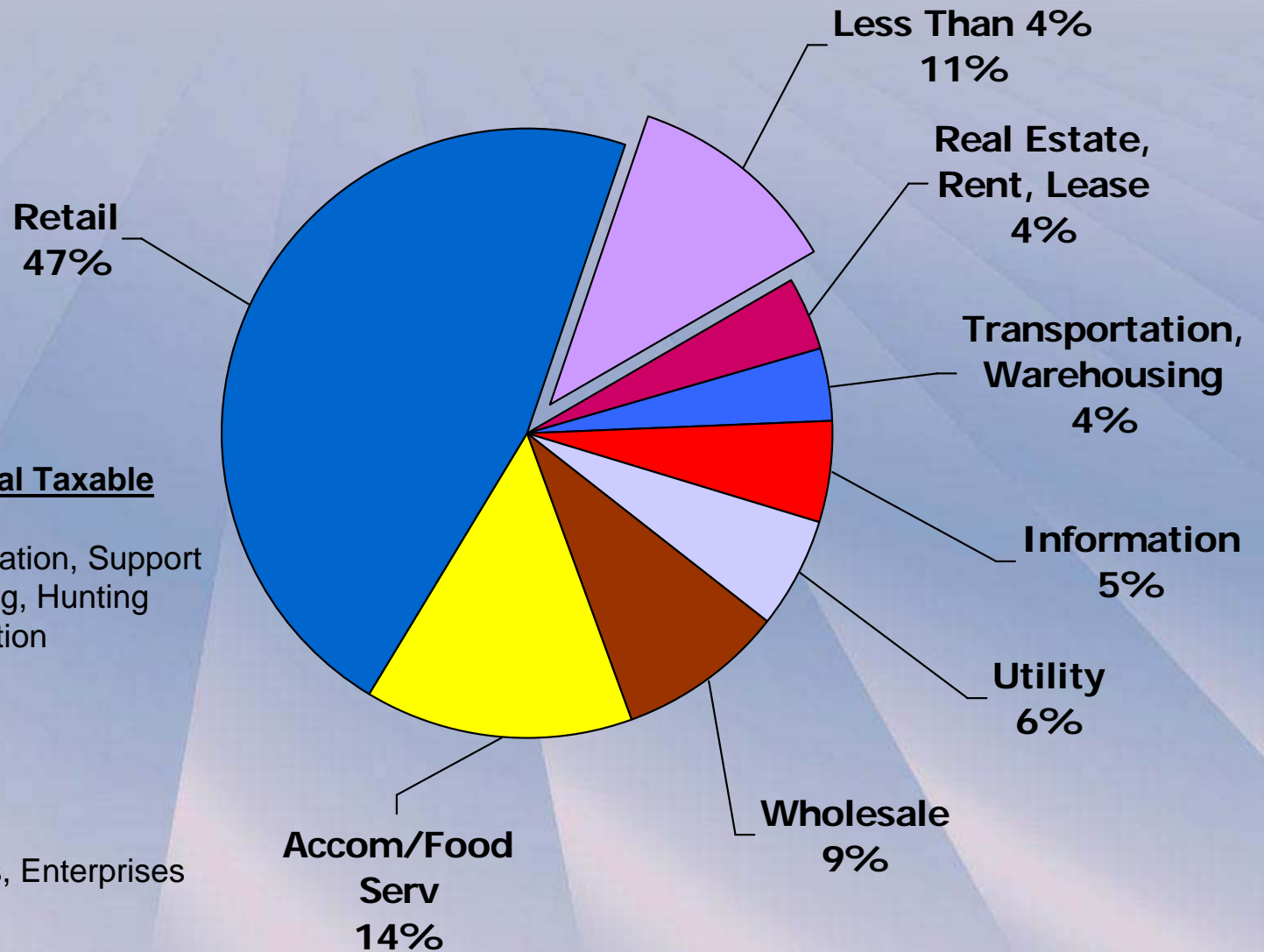
Source – KPB Finance Department, Sales Tax Division

KPB Line-of-Business TAXABLE Sales



Source – KPB Finance Department, Sales Tax Division

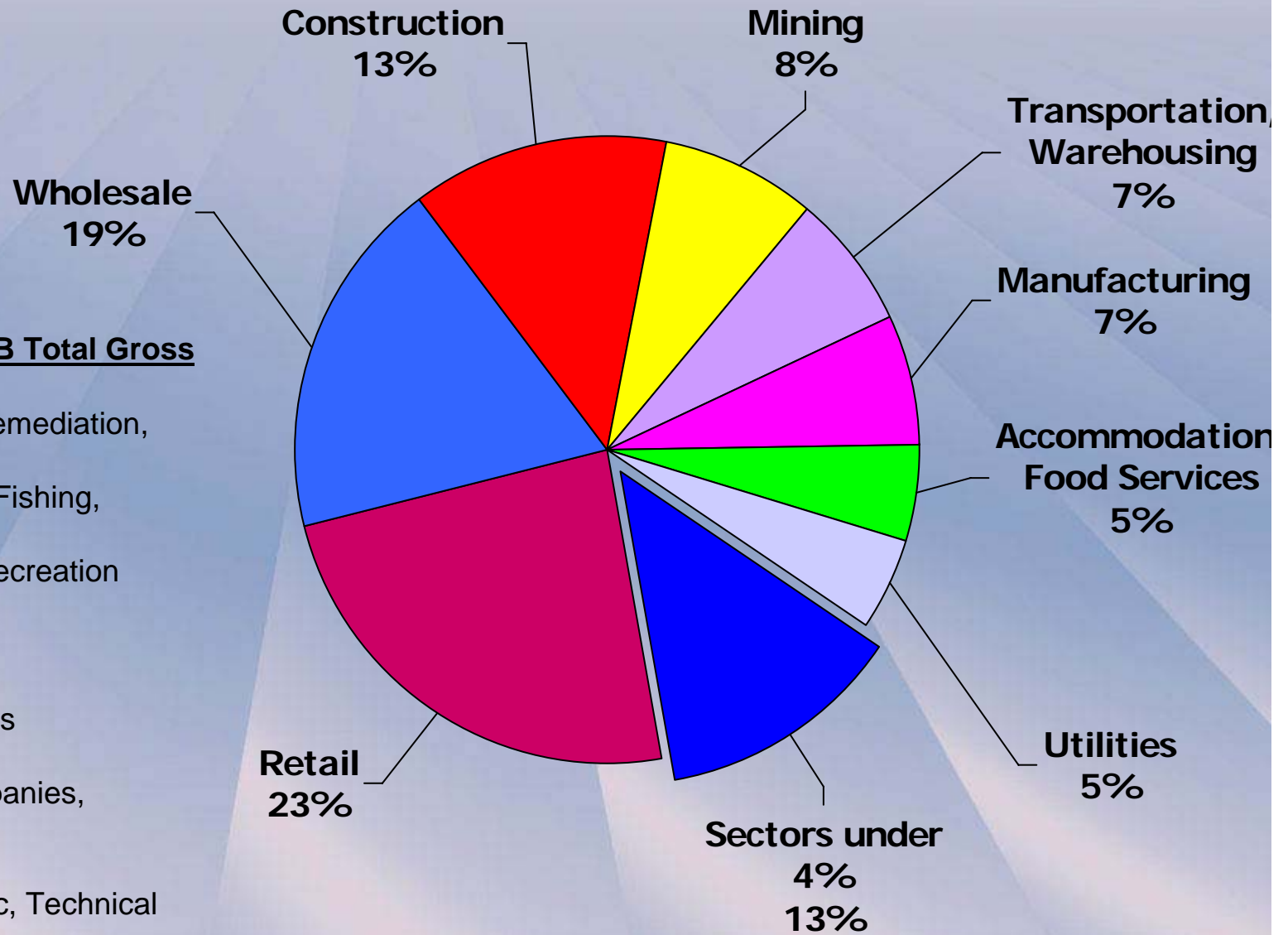
KPB Taxable Sales – 2006



Less Than 4% of KPB Total Taxable Sales

Admin, Waste Mgt, Remediation, Support
 Agriculture, Forestry, Fishing, Hunting
 Arts, Entertainment, Recreation
 Construction
 Education Services
 Finance, Insurance
 Health, Social Services
 Manufacturing
 Management of Companies, Enterprises
 Mining
 Other Services
 Professional, Scientific, Technical
 Public Administration

KPB Gross Sales - 2006

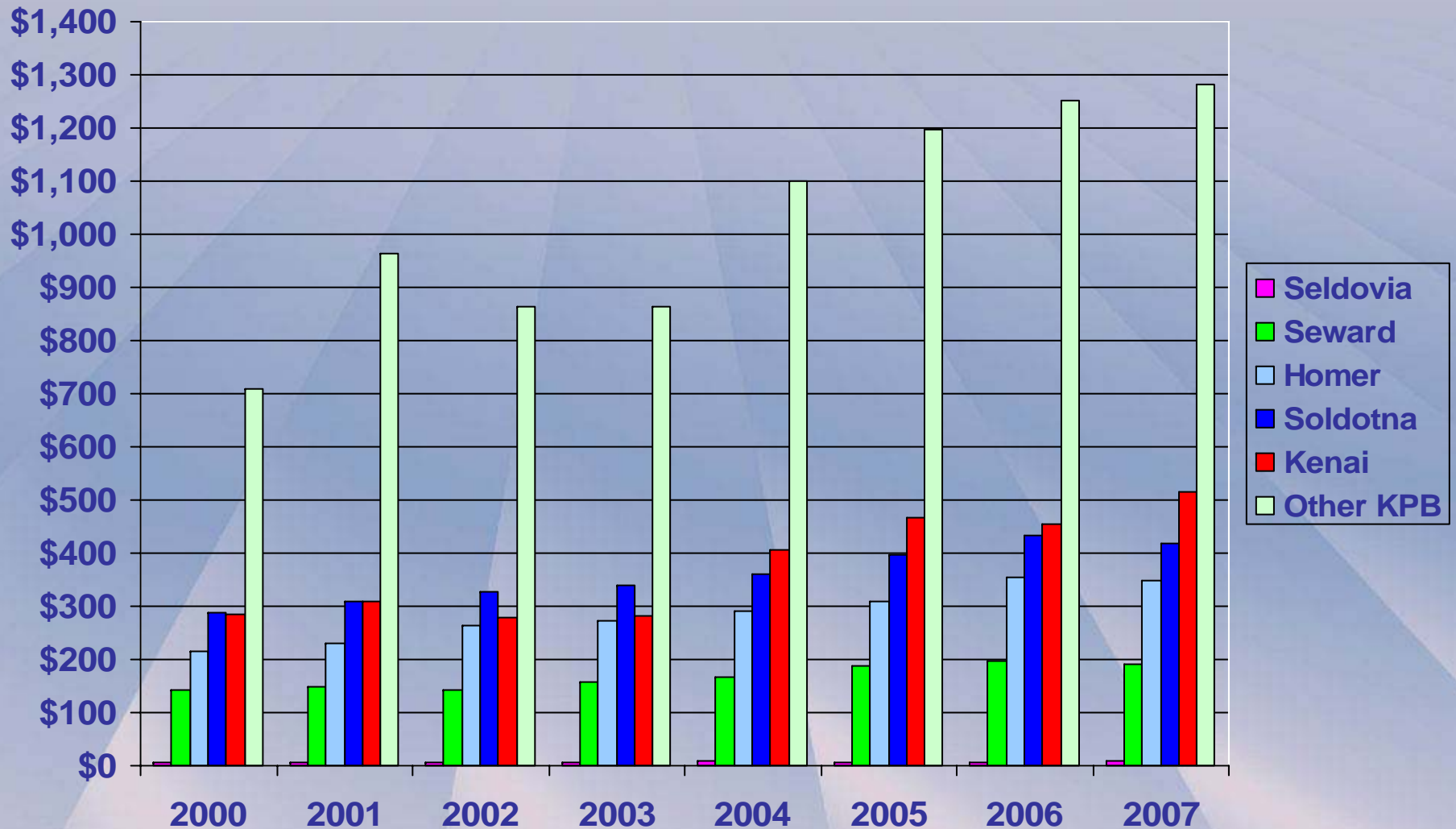


Less Than 4% of KPB Total Gross Sales

- Admin, Waste Mgt, Remediation, Support
- Agriculture, Forestry, Fishing, Hunting
- Arts, Entertainment, Recreation
- Construction
- Education Services
- Finance, Insurance
- Health, Social Services
- Information
- Management of Companies, Enterprises
- Other Services
- Professional, Scientific, Technical
- Public Administration
- Real Estate

KPB Gross Sales by Area

in Millions \$



Source – KPB Finance Department, Sales Tax Division

Tourism



Primary (90% Model) Tourism Activity SIC – A Subset of Service and TCPU

SIC Codes Selected as Primary Tourism Industry – requires that the business activity is tourist related and that 90% or more of annual sales occur between April 1 and September 30.



- **Transportation**

- 4141 - Local Bus Charter Service
- 4499 - Water Transportation Services NEC
- 4724 - Travel Agencies
- 4725 - Tour Operators

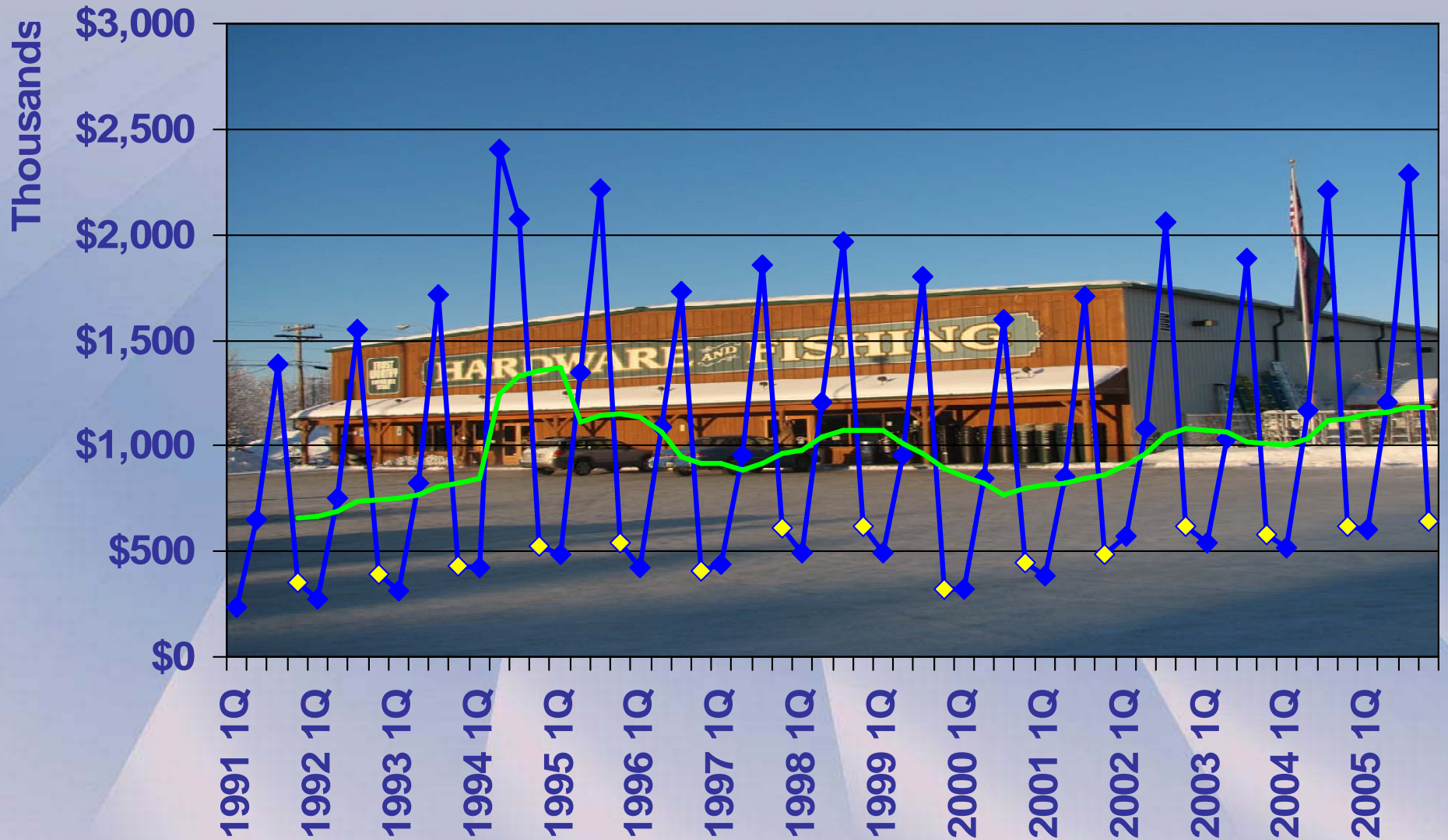
- **Services**

- 7000 - Hotels and Other Lodging Places
- 7011 - Hotels, Motels, Tourist Courts
- 7021 - Rooming & Boarding Houses
- 7032 - Sporting & Recreational Camps
- 7033 - RV Parks & Campsites
- 7041 - Hotels, Lodging House/Members
- 7519 - Utility Trailer and RV Rental
- 7999 - Amusement, Recreation Svc, NEC - **Includes Guides**



Soldotna Taxable Tourism Sales

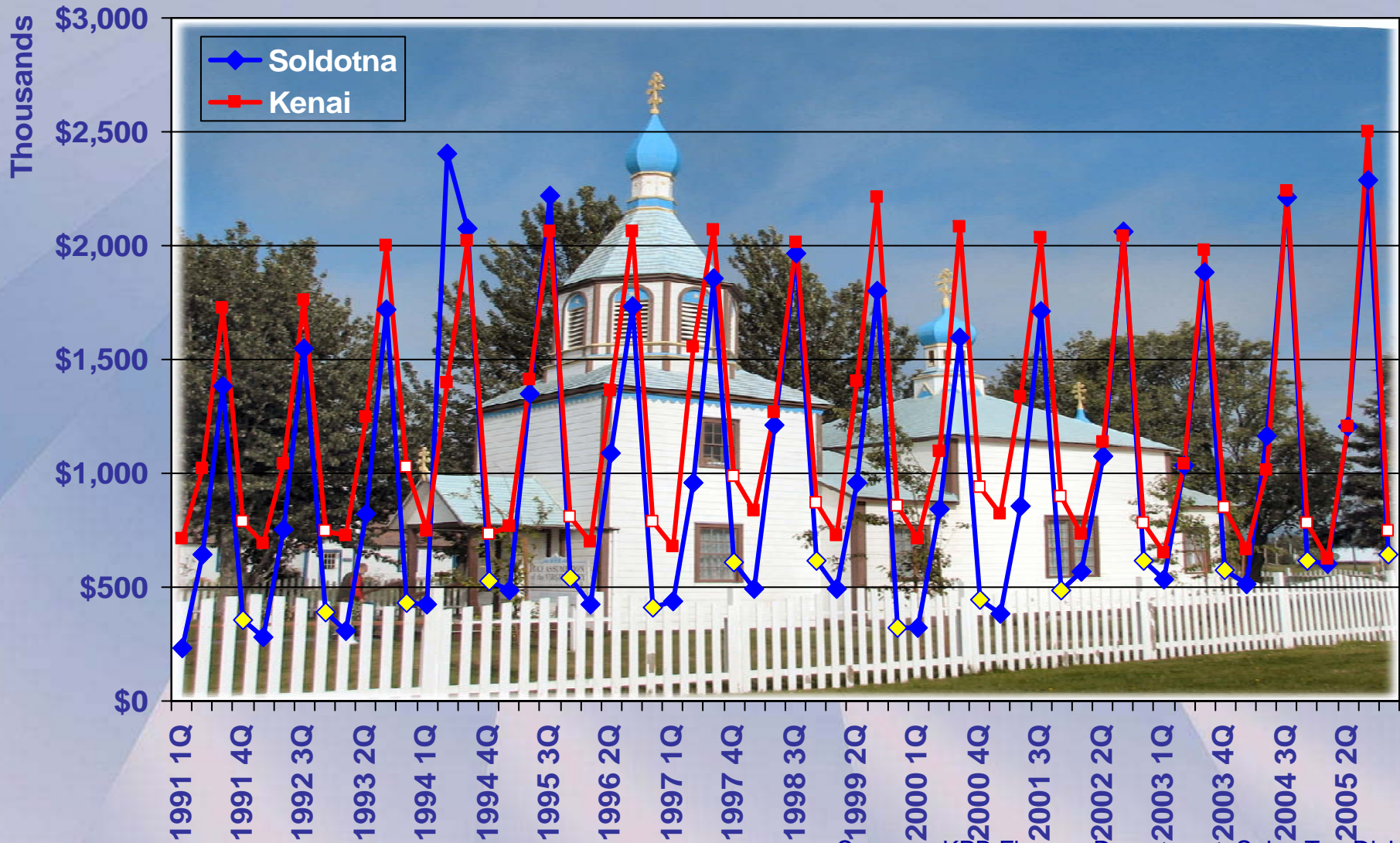
90% Model – SIC – Four quarter moving average trendline



Source – KPB Finance Department, Sales Tax Division

Soldotna v Kenai Taxable Tourism Sales

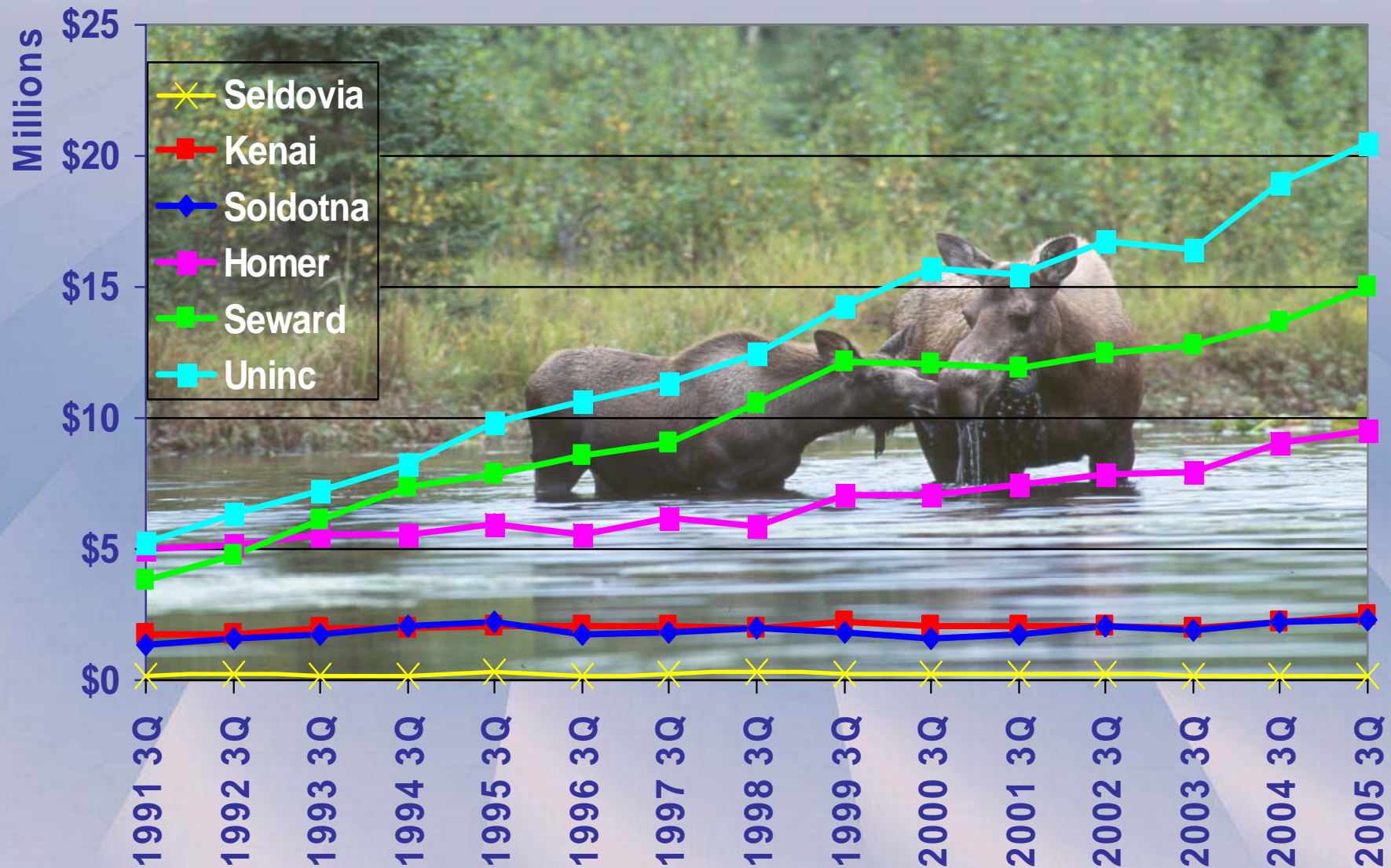
90% Model - SIC



Source - KPB Finance Department, Sales Tax Division

3rd Quarter Tourism Sales - SIC - 90% Model

(Third Quarter Provides KPB Peak Tourism Activity)



Source – KPB Finance Department, Sales Tax Division

KPB Expanded (60% Model) Tourism Sales

A More Realistic Measure

-Additional SIC Code Data – now includes some retail sales

SIC Codes that could be impacted by tourism and 60% or more of annual sales occur during the April thru September main tourist season.

TRANSPORTATION SALES

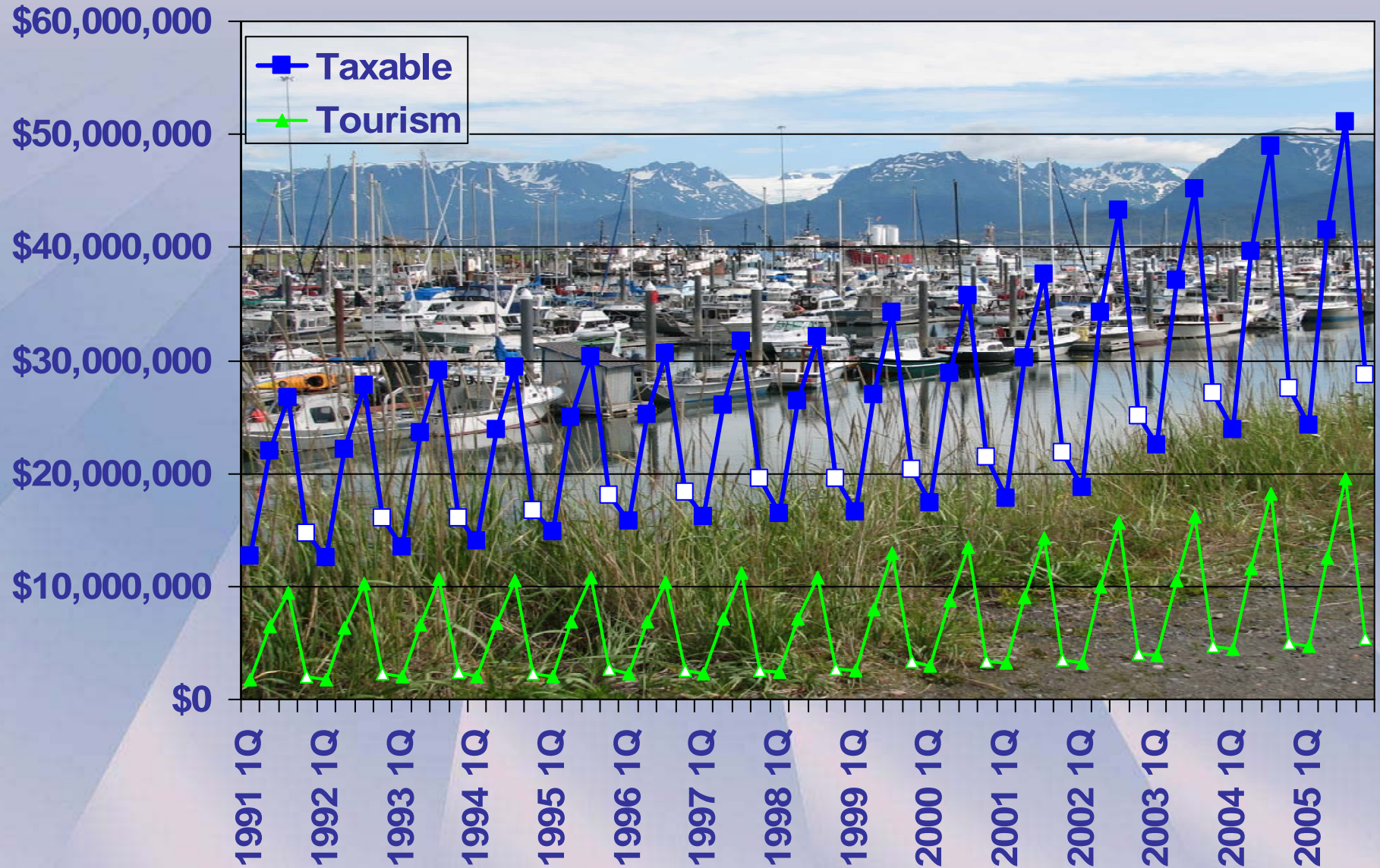
- 4130 – Intercity Bus Transport**
- 4493 – Marinas**
- 4500 – Air Transportation**
- 4512 – Air Transportation – Scheduled**
- 4522 – Nonscheduled Air Transportation**
- 7211 – Power Laundries**
- 7214 – Passenger Car Rental**
- 7215 – Coin Op Laundry & Dry Cleaning**
- 8400 – Museums, Art Galleries & Zoos**

RETAIL SALES

- 5421 – Seafood Markets**
- 5461 – Retail Bakeries**
- 5541 – Gas Service Stations & Repairs**
- 5800 – Eating and Drinking Places**
- 5812 – Eating Places**
- 5813 – Drinking Places**
- 5947 – Gift/Novelty/Souvenir Shops**

Homer Taxable Sales - Tourism v Total

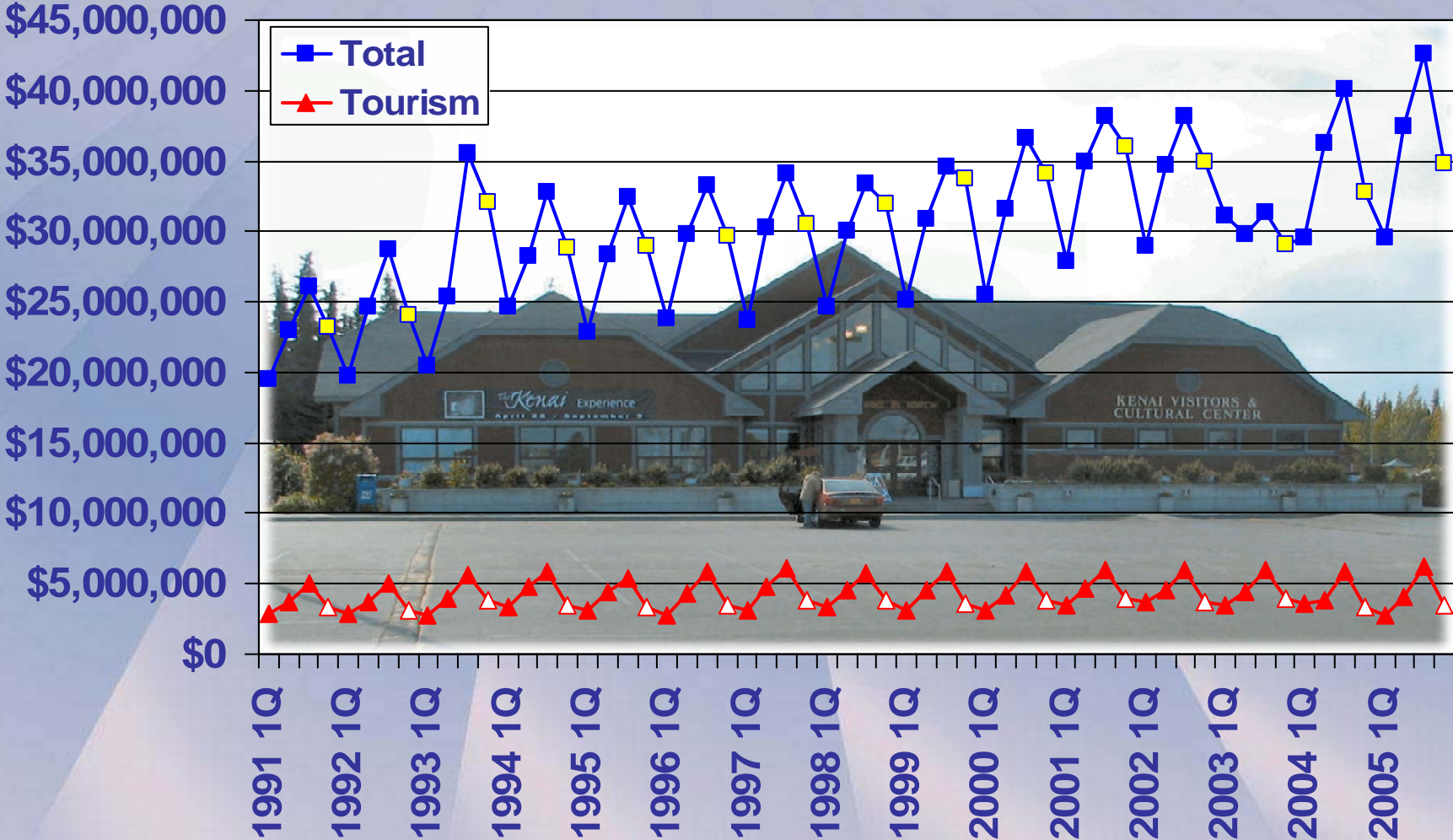
60% Model - SIC



Source – KPB Finance Department, Sales Tax Division

Kenai Taxable Sales - Tourism v Total

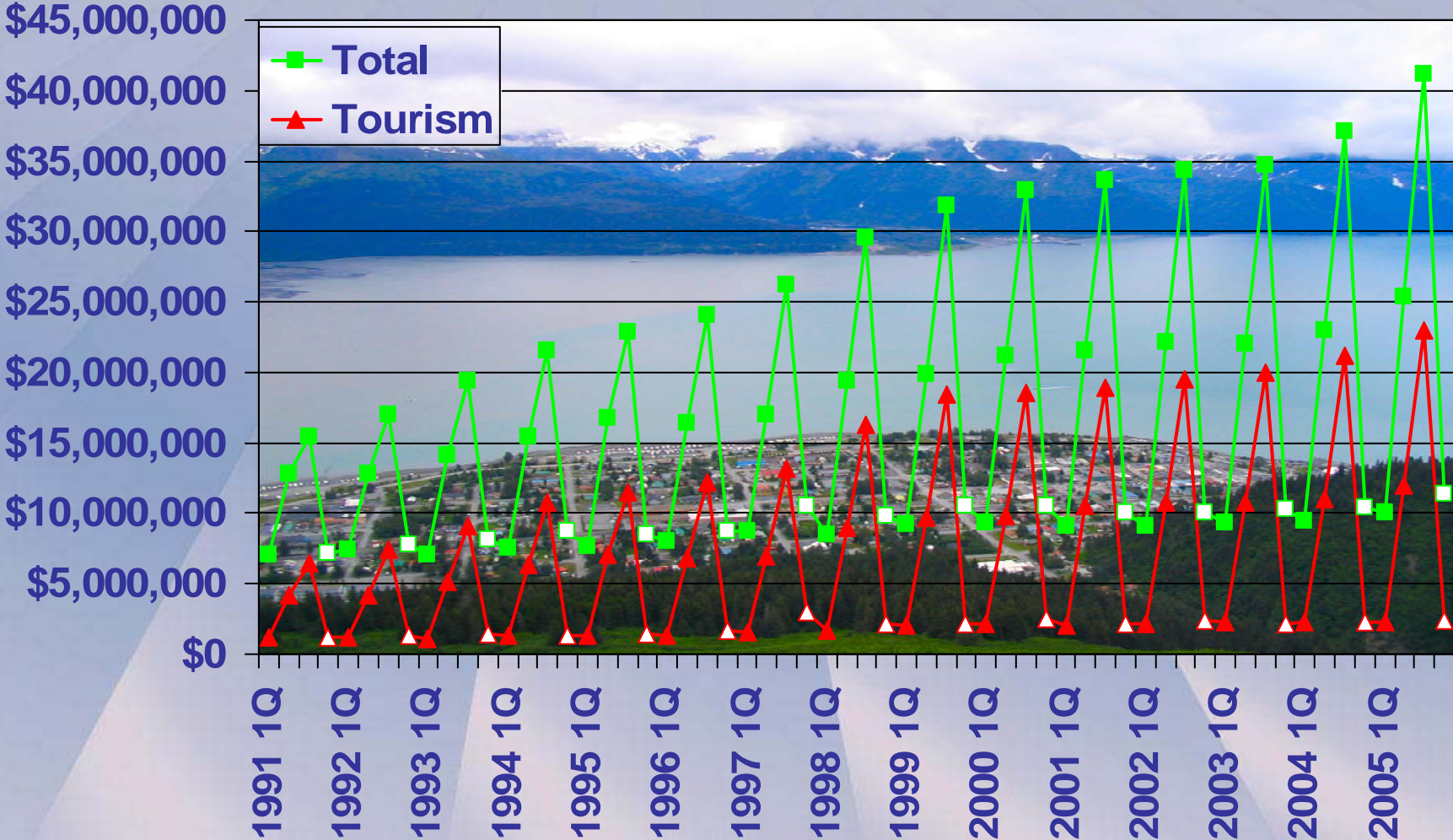
60% Model - SIC



Source – KPB Finance Department, Sales Tax Division

Seward Taxable Sales - Tourism v Total

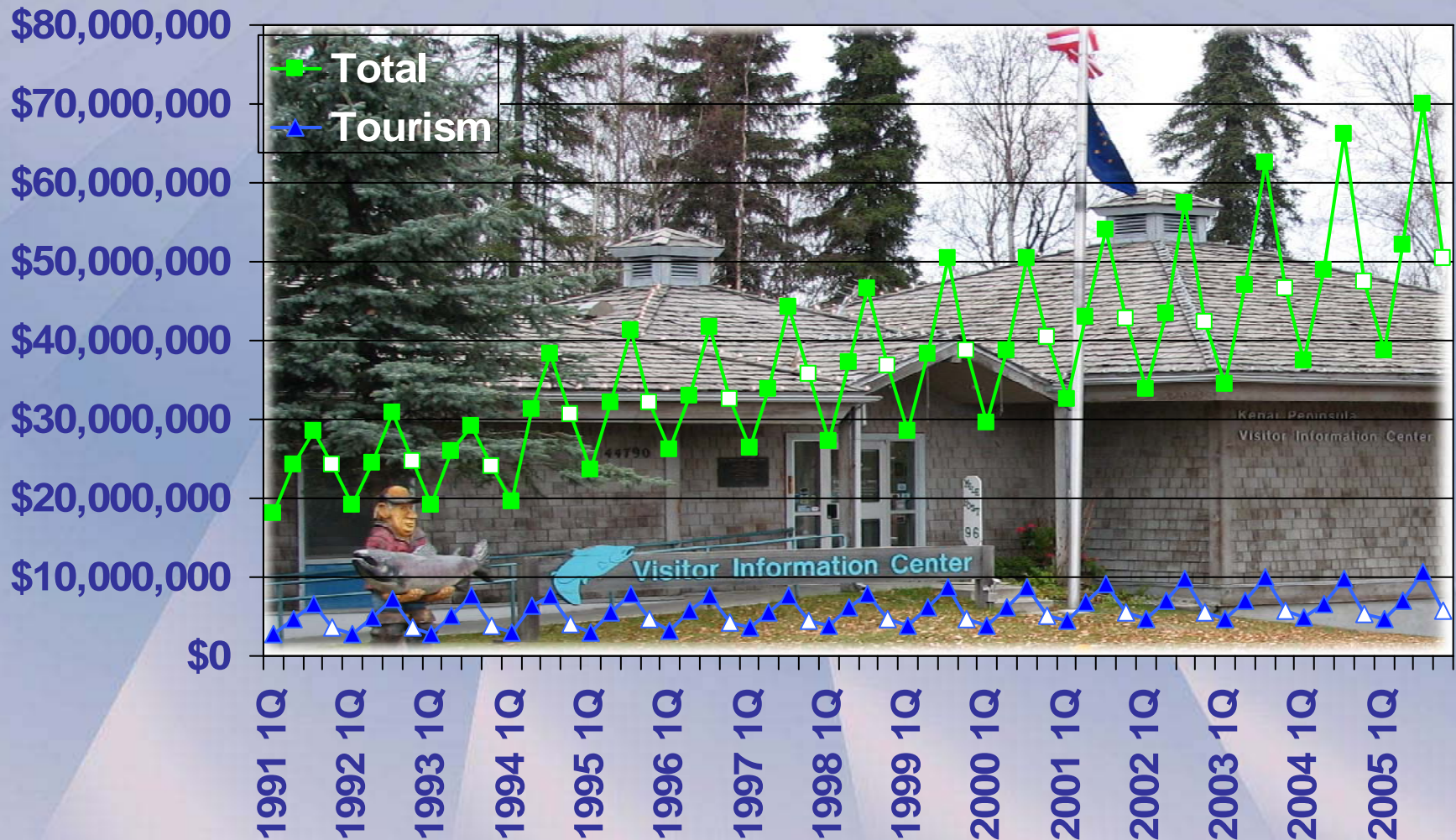
60% Model - SIC



Source - KPB Finance Department, Sales Tax Division

Soldotna Taxable Sales - Tourism v Total

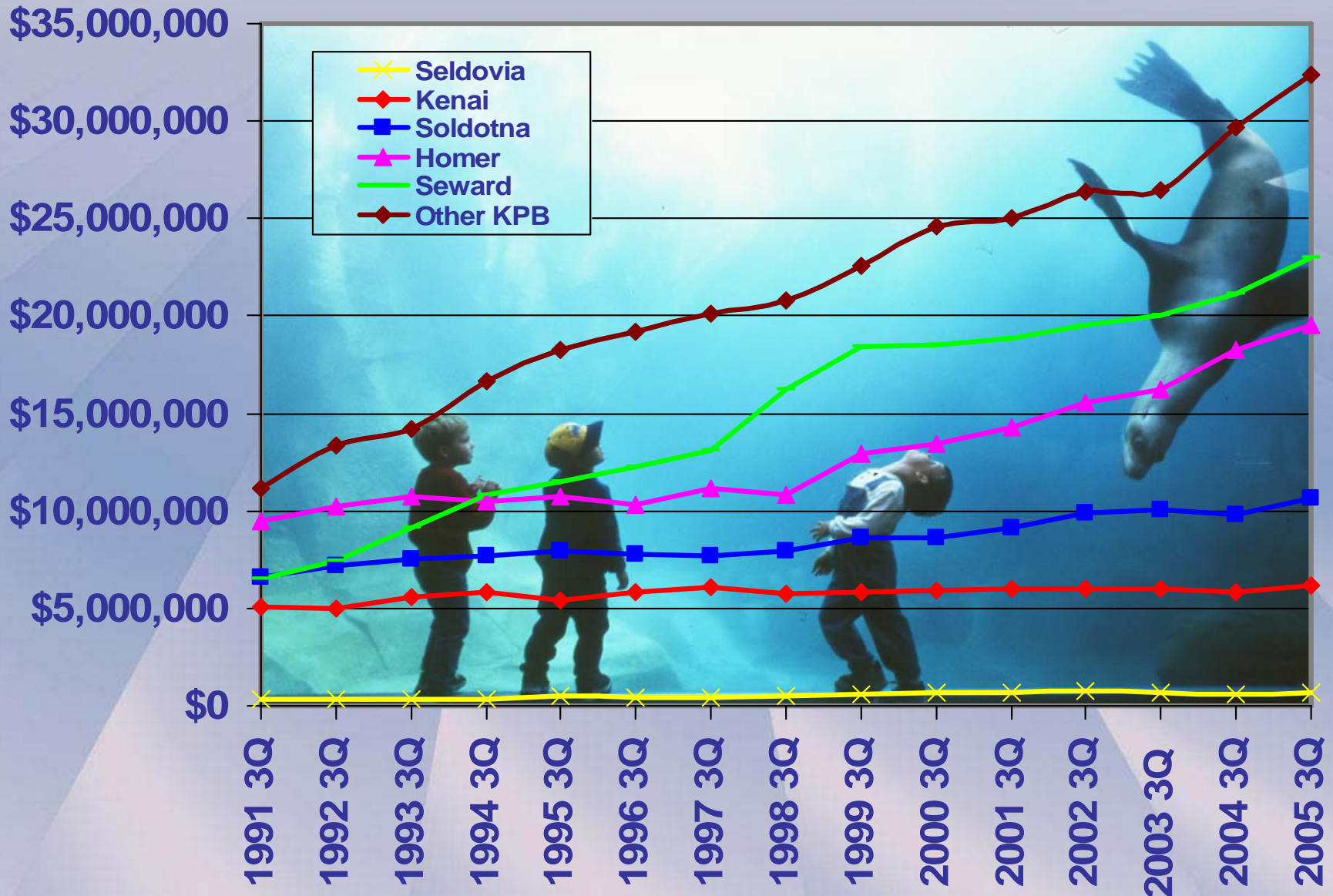
60% Model - SIC



Source - KPB Finance Department, Sales Tax Division

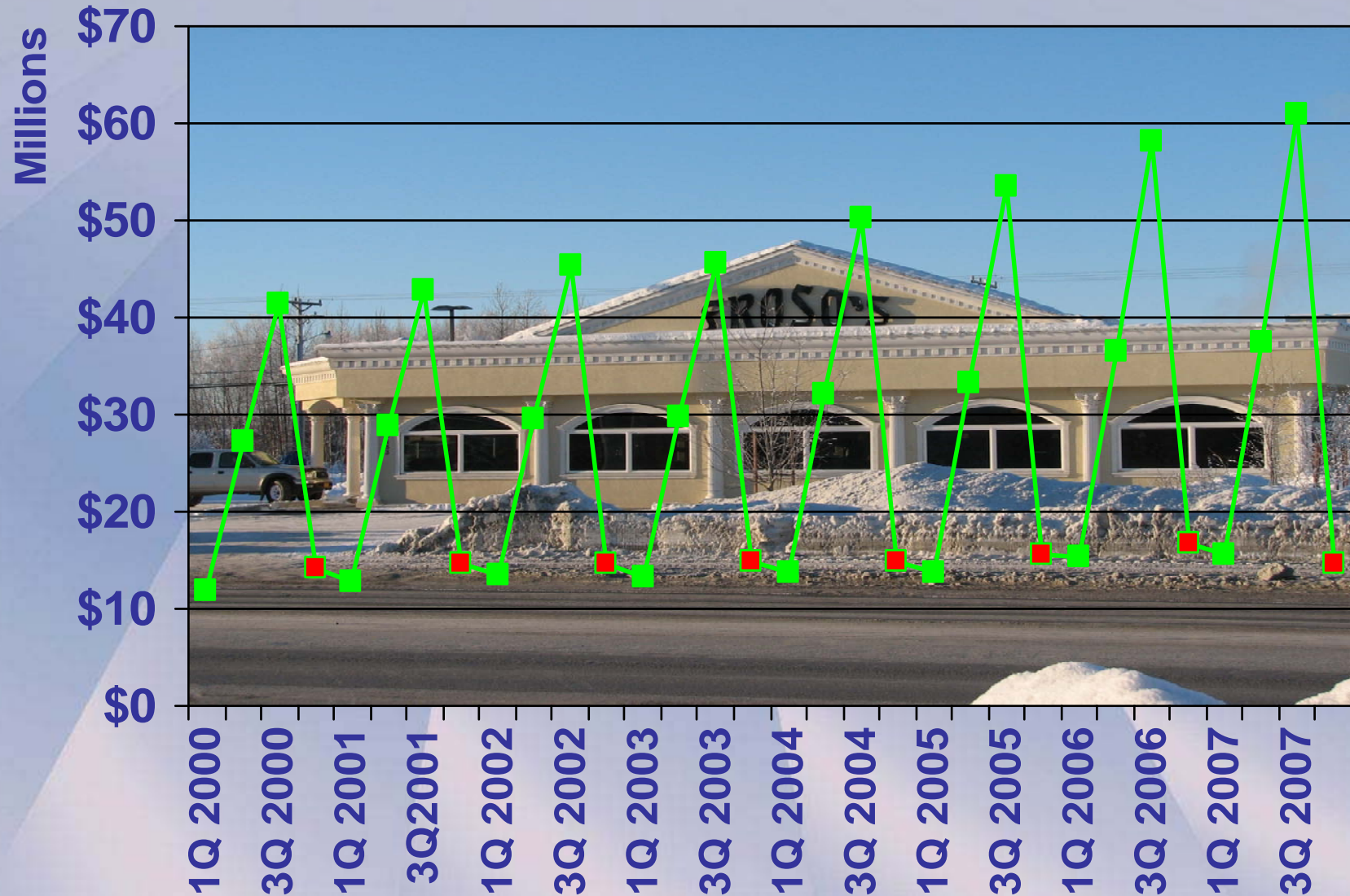
3rd Qtr Tourism Sales by City

60% Model - SIC



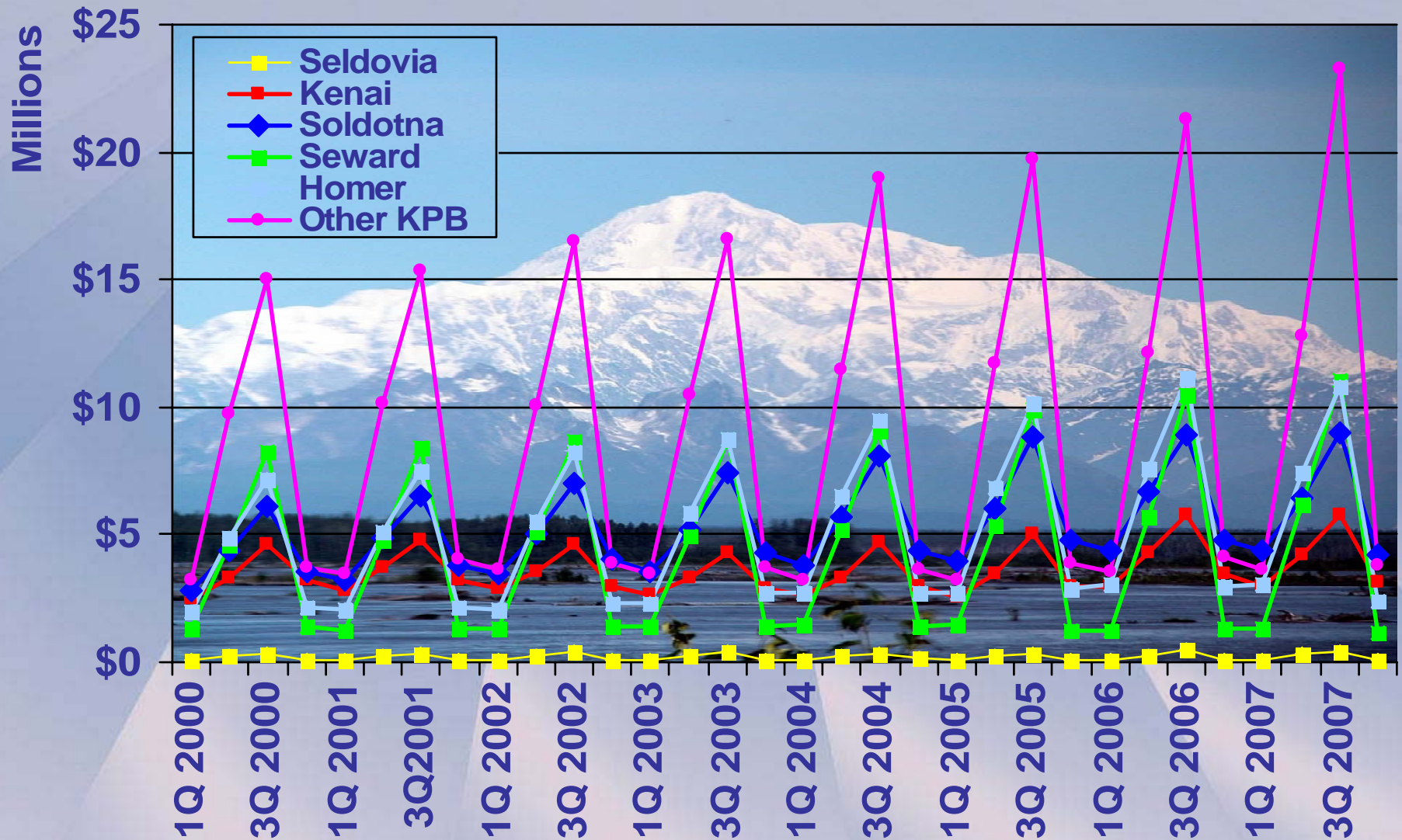
Source – KPB Finance Department, Sales Tax Division

KPB Taxable Accommodation & Food Service Sales (NAICS)



Source – KPB Finance Department, Sales Tax Division

Taxable Accommodation & Food Service Sales by City (NAICS)

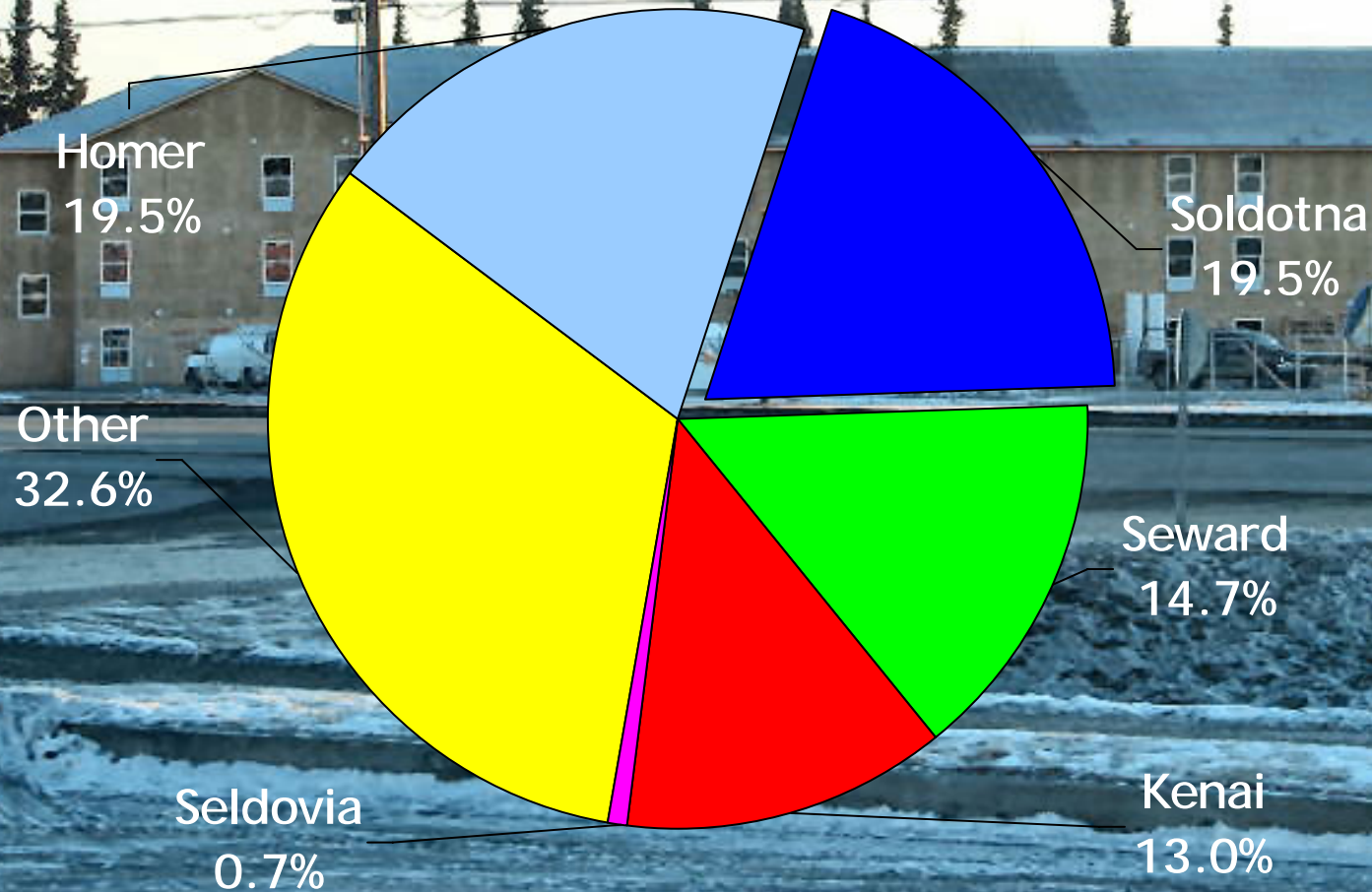


Source – KPB Finance Department, Sales Tax Division

Nontaxable Accommodations 2006 through Third Quarter 2007

Nontaxable Accommodations Sales – in \$				
	2006	Nontaxable	2007	Nontaxable
1st Qtr	Gr- 16,202,460 Tx- 15,238,026	\$964,434 6.0%	Gr- 17,932,090 Tx- 15,522,613	\$2,409,477 13.4%
2nd Qtr	Gr- 39,946,666 Tx- 36,953,818	\$3,352,848 8.4%	Gr- 39,677,428 Tx- 37,436,353	\$2,241,075 5.6%
3rd Qtr	Gr- 65,309,904 Tx- 58,167,189	\$7,142,715 10.9%	Gr- 65,150,949 Tx- 60,263,352	\$4,887,597 7.5%
4th Qtr	Gr- 18,107,341 Tx- 17,019,089	\$1,088,252 6.0%		
Total	Gr- 139,566,371 Tx- 127,018,122	\$12,548,249 9.0%		

2006 Accommodations & Food Services Taxable Sales by Area



Source – KPB Finance Department, Sales Tax Division

Economic Census - Accommodations - 2002

\$ Rounded to 1,000

	# Establishments	Receipts	Annual Payroll	# Paid Employees
Homer	16	\$6,563,000	\$1,990,000	92
Kenai	9	\$8,662,000	\$2,412,000	<u>137</u>
Seward	13	\$9,414,000	\$2,657,000	81
Soldotna	18	\$5,384,000	\$1,551,000	127
Other	<u>29</u>	<u>\$12,969,000</u>	<u>\$3,465,000</u>	96
KPB Total	85	\$42,992,000	\$12,075,000	533

Percent of KPB Total				
	Establishments	Receipts	Annual Payroll	Paid Employees
Homer	18.8%	15.3%	16.5%	17.3%
Kenai	10.6%	20.2%	20.0%	<u>25.7%</u>
Seward	15.3%	21.9%	22.0%	15.2%
Soldotna	21.2%	12.5%	12.8%	23.8%
Other	<u>34.1%</u>	<u>30.2%</u>	<u>28.7%</u>	18.0%

Source – U.S. Census Bureau, 2002 Economic Census

Economic Census - Food Services - 2002

Rounded to 1,000

	# Establishments	Receipts	Annual Payroll	# Paid Employees
Homer	33	\$9,048,000	\$2,453,000	206
Kenai	26	\$10,148,000	\$2,633,000	272
Seward	25	\$9,175,000	\$2,387,000	113
Soldotna	<u>42</u>	<u>\$17,368,000</u>	<u>\$4,207,000</u>	<u>346</u>
Other KPB	38	9,259,000	\$2,481,000	166
KPB Total	164	\$54,998,000	\$14,161,000	1,103

	Establishments	Receipts	Annual Payroll	Paid Employees
Homer	20.0%	16.5%	17.3%	18.7%
Kenai	15.9%	18.5%	18.6%	24.7%
Seward	<u>15.2%</u>	16.7%	16.9%	10.2%
Soldotna	<u>25.6%</u>	<u>31.6%</u>	<u>29.7%</u>	<u>31.4%</u>
Other KPB	23.2%	16.8%	17.5%	15.1%

Source – U.S. Census Bureau, 2002 Economic Census

2006 GROSS Sales in Goods, Services, Government

	Goods Producing	Service Providing	Government	Total
Homer	74,935,174	276,593,370	3,997,559	355,526,103
Kenai	<u>130,676,357</u>	321,640,004	3,494,476	<u>455,810,837</u>
Seldovia	2,368,051	4,775,641	402,424	7,546,116
Seward	58,693,277	133,468,474	<u>6,159,339</u>	198,321,090
Soldotna	102,731,833	<u>328,125,598</u>	1,119,273	431,976,704
Other KPB	478,897,603	524,235,287	512,629	1,003,645,519
KPB Total	848,302,295	1,588,838,374	15,685,700	2,452,826,369

Source – KPB Finance Department, Sales Tax Division

2006 GROSS Sales in \$

Select Lines of Business

	Construction	Manufacturing	Wholesale	Transportation & Warehousing	Information & Communication	Real Estate, Rentals, and Leasing
Homer	55,713,200	5,169,339	41,874,329	18,900,444	8,573,767	13,678,079
Kenai	40,422,731	<u>29,222,261</u>	<u>53,888,047</u>	<u>75,968,120</u>	<u>11,880,836</u>	17,752,116
Seldovia	1,030,135	12,259	1,590,217	358,162	306,055	1,325,657
Seward	38,326,342	10,410,509	27,657,623	21,632,880	4,159,799	9,274,861
Soldotna	<u>73,283,710</u>	10,856,645	15,456,999	7,644,833	10,918,974	<u>18,354,949</u>
Other KPB	153,003,076	121,508,634	124,093,998	62,539,002	23,818,108	27,749,004
KPB Total	361,779,194	177,179,647	264,561,213	187,043,441	59,657,539	88,134,666

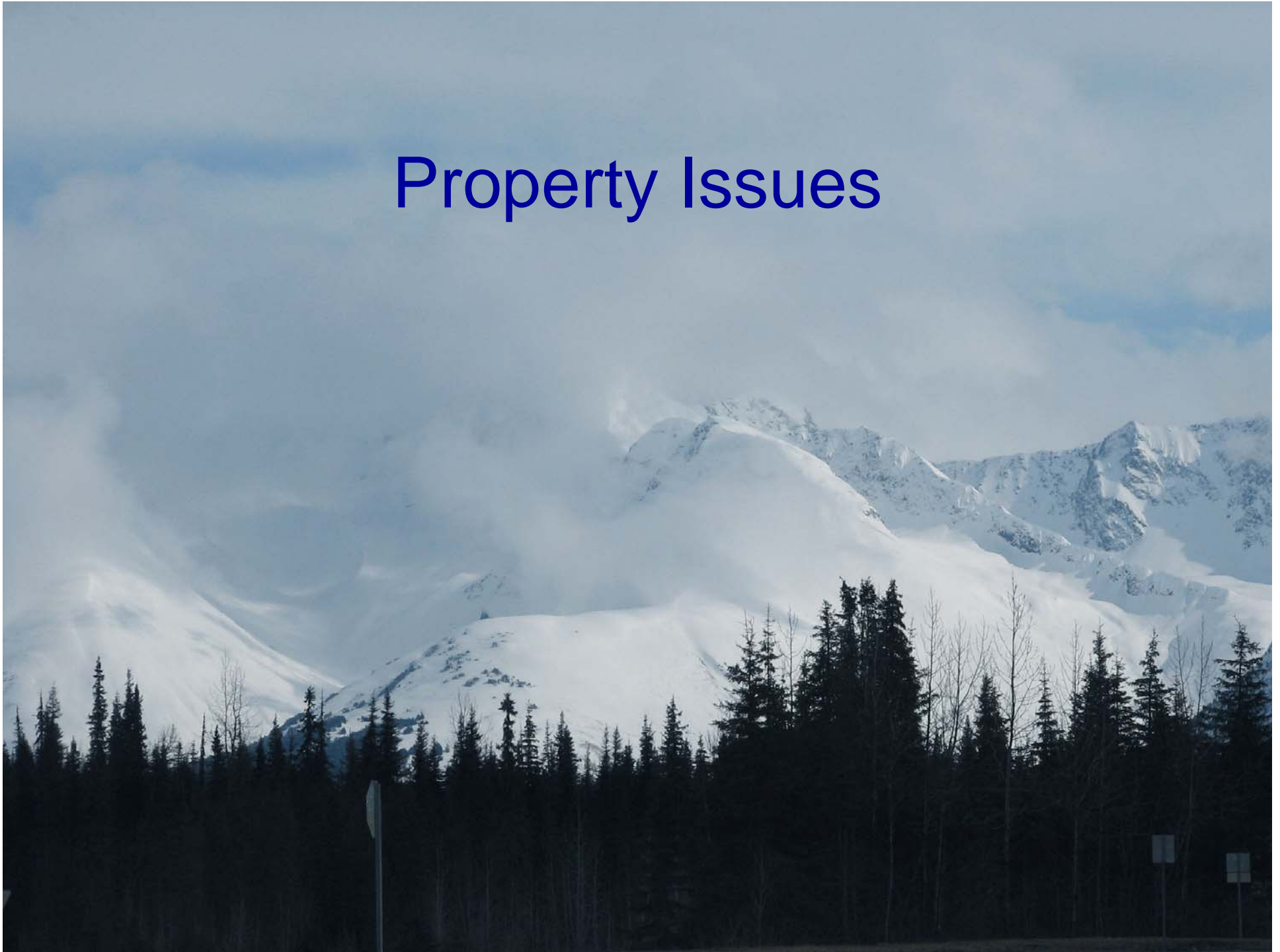
Source – KPB Finance Department, Sales Tax Division

2006 TAXABLE Sales in Goods, Services, Government

	Goods Producing	Service Providing	Government	Total
Homer	8,214,995	140,757,266	3,939,804	152,912,065
Kenai	10,423,085	143,108,269	2,160,749	155,692,103
Seldovia	105,293	3,273,828	272,173	3,651,294
Seward	3,679,326	81,139,276	<u>6,087,059</u>	90,905,661
Soldotna	<u>11,103,325</u>	<u>215,026,532</u>	958,451	<u>227,088,308</u>
Other KPB	26,030,732	230,531,270	15,303	256,577,305
KPB Total	59,556,756	813,836,441	13,433,539	886,826,736

Source – KPB Finance Department, Sales Tax Division

Property Issues



Real Property Exemptions

Properties Exempt from Taxation - Mandated by State Law.

Fire System Prevention

Mental Health Trust

Native Allotment

Electric Cooperative

Conservation Easements

State Educational

ANCSA Native

Government

Farm Deferment

Religious

Disabled Veteran

Charitable

Cemetery

Armed Forces

Senior Citizen

Hospital

KPB Exemptions Include:

Homeowner's Exemption

Disabled Veteran Exemption

Disabled Resident Tax Credit

River Restoration Exemption

Timber Harvest Exemption

Senior Citizen Exemption

Volunteer Firefighter/EMS Exemption

River Habitat Tax Credit

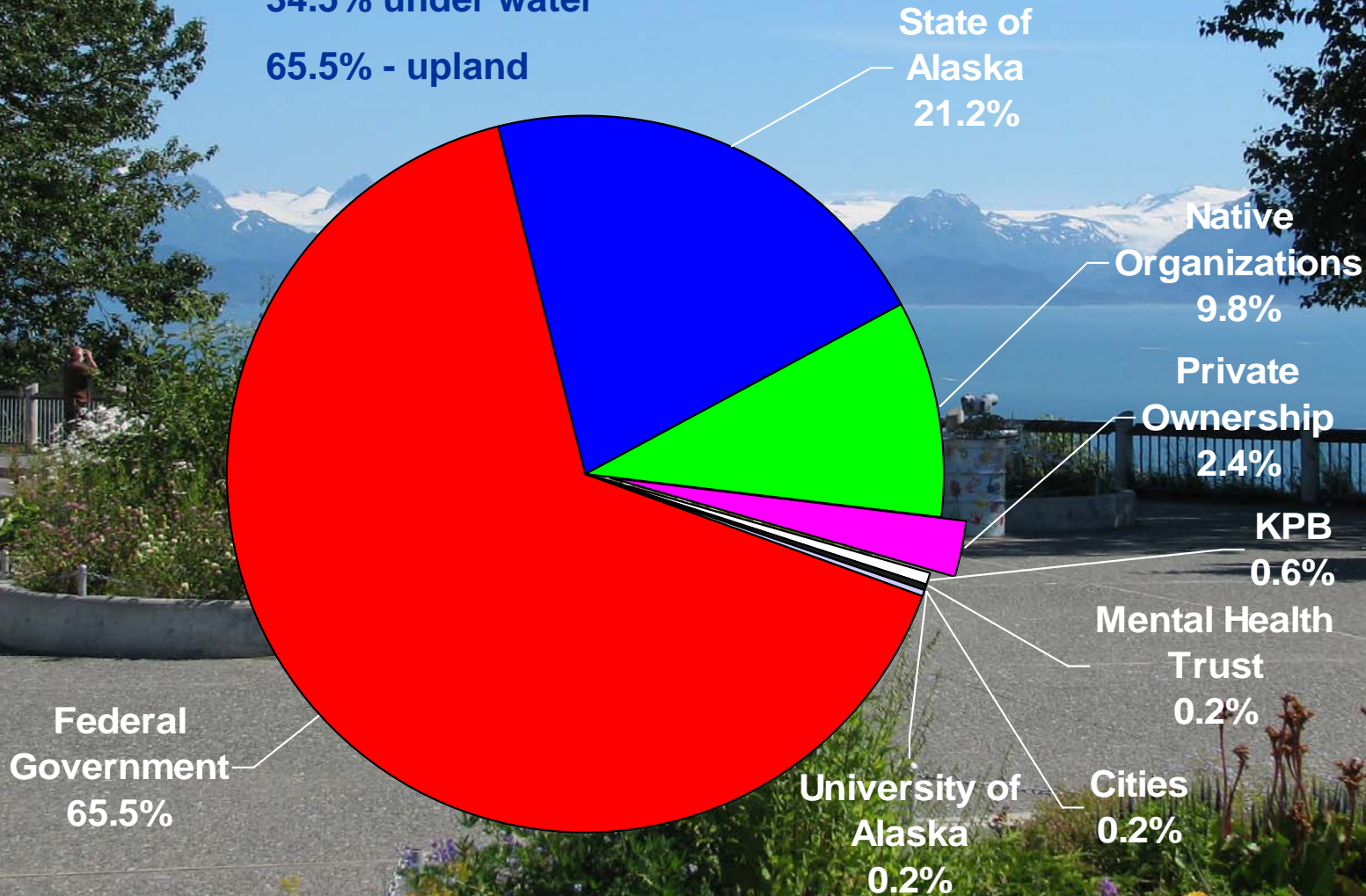
Disaster Tax Reduction

Land Ownership

KPB – 24,737 mi²

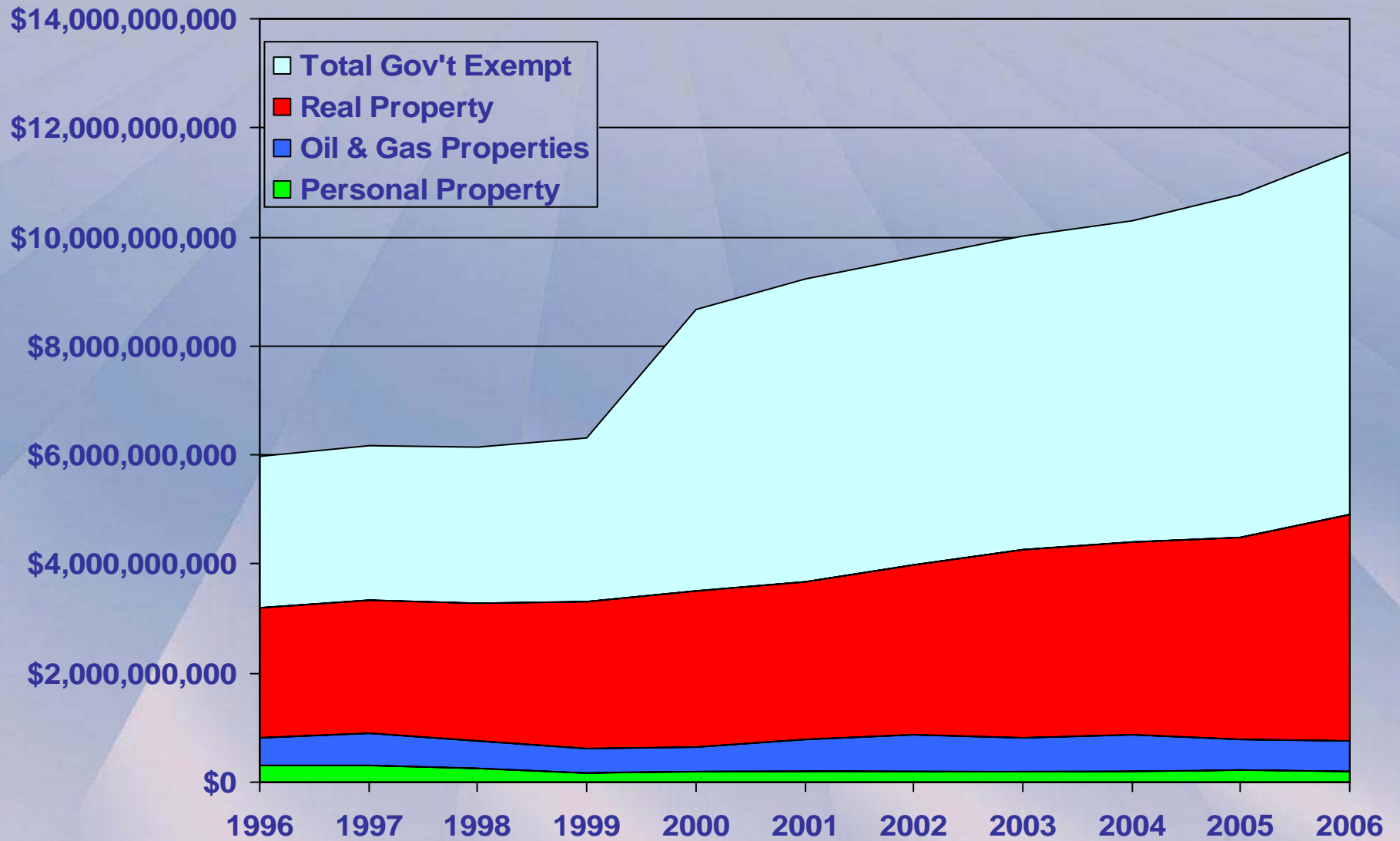
34.5% under water

65.5% - upland



Source - KPB Assessing Department

KPB Assessed Property Values Over Time



Source - KPB Assessing Department

Full and Assessed Real Property Values

Annual Change of Full and True Value			
	2004	2005	2006
Homer	12.6%	19.2%	14.0%
Kenai	3.4%	3.4%	-0.1%
Seward	8.7%	3.7%	11.4%
Soldotna	3.1%	7.2%	13.1%
KPB	5.2%	5.9%	11.6%

Annual Change of Assessed Value			
	2004	2005	2006
Homer	6.8%	19.8%	15.3%
Kenai	3.2%	2.3%	0.0%
Seward	2.1%	7.5%	5.9%
Soldotna	4.1%	6.2%	8.0%
KPB	3.4%	4.7%	12.1%

Source - KPB Assessing Department

Housing



Average Assessed Value of New Homes Permitted - 2007, 2006

	Total Value 2007	Total Volume 2007	Average Value 2007	Average Value 2006
Homer	\$7,650,100	<u>41</u>	\$186,587	\$205,220
Kenai	\$5,708,500	33	\$172,985	\$200,527
Seldovia	\$252,000	4	\$63,000	\$28,333
Seward	\$252,354	2	\$126,177	\$139,750
Soldotna	<u>\$8,749,413</u>	30	<u>\$291,647</u>	<u>\$262,050</u>
Total KPB Cities	22,612,367	110	\$205,567	\$208,553

Source – Homer, Kenai, Seldovia, Seward, Soldotna

Value of New Homes Permitted Average 1998-2007, Annual 2007

	Ten Year Annual Average Total Value	Ten Year Annual Average Total Volume	Ten Year Average Value	Average Value 2007
Homer	<u>\$5,711,405</u>	<u>39</u>	\$146,446	\$186,588
Kenai	\$4,823,450	31	\$155,595	\$172,985
Seldovia	\$161,400	3	\$55,955	\$63,000
Seward	\$1,090,575	7	\$149,476	\$126,177
Soldotna	\$4,256,256	23	<u>\$185,055</u>	<u>\$291,647</u>
Total KPB Cities	\$16,034,785	99	\$161,968	\$205,567

Source – Homer, Kenai, Seldovia, Seward, Soldotna

Construction Costs



Average Price of Materials for a New Home

Fixed basket of Goods

	2003	2004	2005	2006	2007
<u>Kenai</u> - total with concrete, rebar	\$21,611	\$24,244	\$24,393	\$24,216	\$26,580
Plus windows and doors	\$2,843	\$3,413	\$3,095	\$3,667	\$3,632
 					
<u>Anchorage</u> - total with concrete, rebar	\$19,475	\$20,757	\$23,802	\$24,983	\$26,875
Plus windows and doors	\$3,382	\$3,169	\$2,524	\$2,976	\$3,259
 					
<u>Wasilla</u> - total with concrete, rebar	\$19,576	\$22,405	\$24,043	\$25,836	\$25,202
Plus windows and doors	\$2,516	\$3,201	\$3,459	\$3,643	\$3,449
 					
<u>Fairbanks</u> - total with concrete, rebar	\$22,999	\$23,381	\$25,584	\$25,986	\$26,875
Plus windows and doors	\$3,851	\$4,189	\$3,503	\$3,471	\$3,709

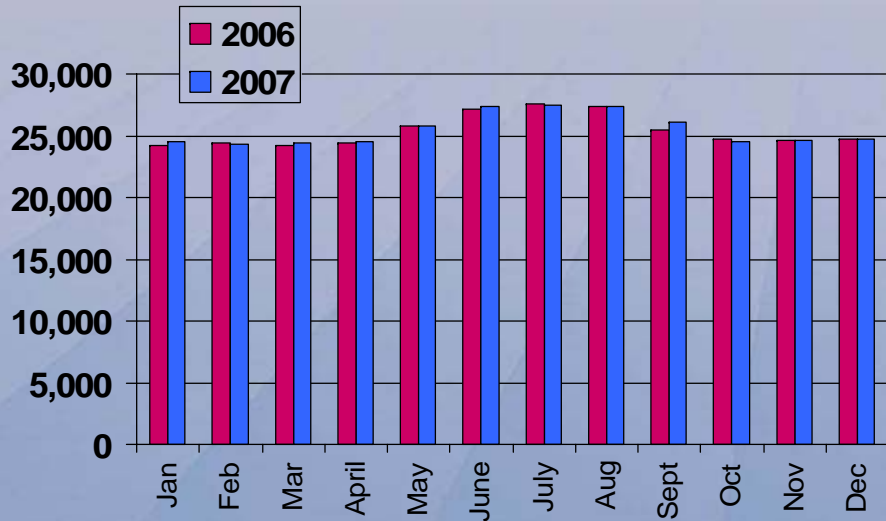
Source – Alaska Department of Labor & Workforce Development

Employment

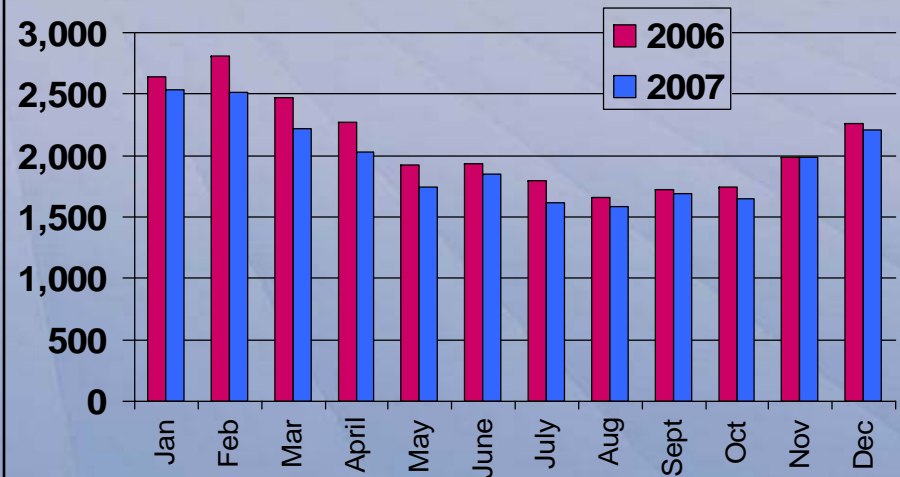


KPB Labor Statistics – 2006, 2007

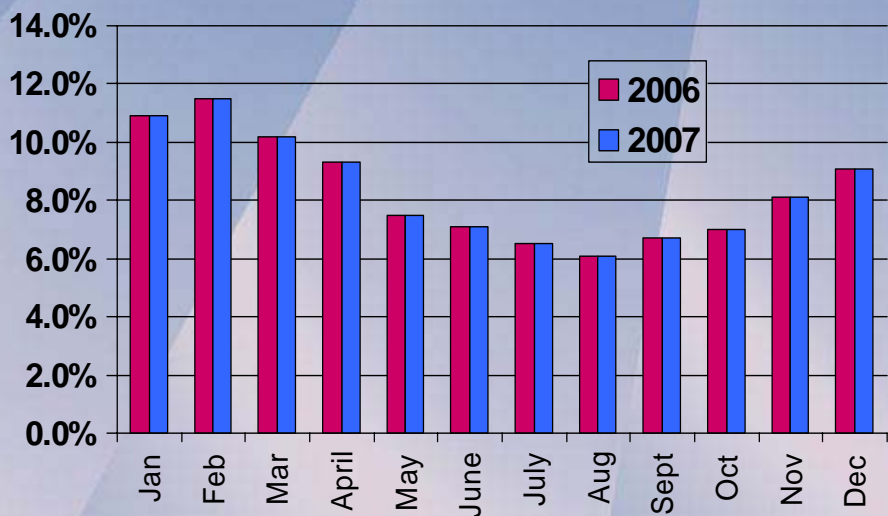
Labor Force



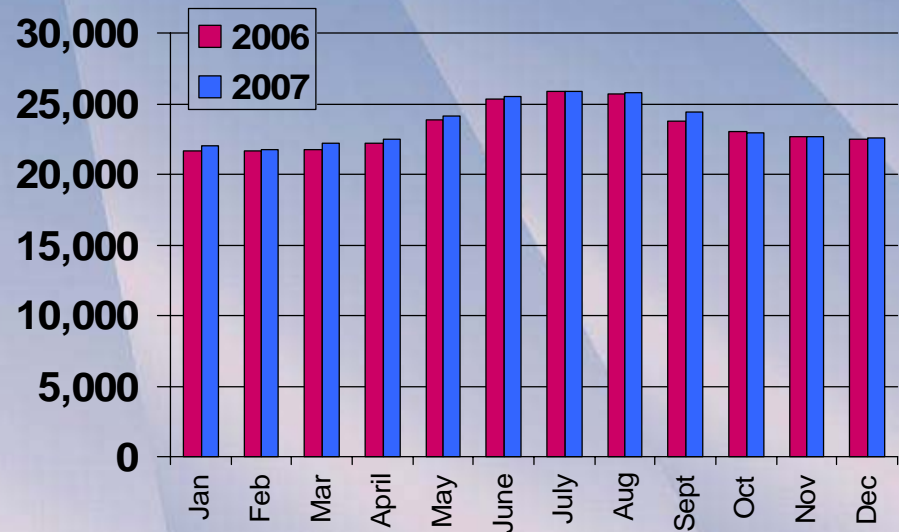
Unemployment



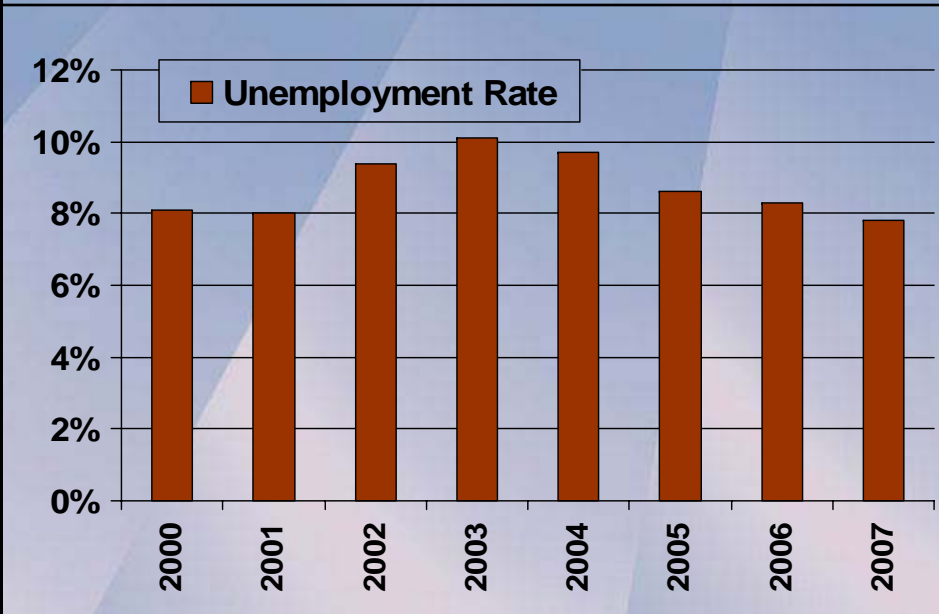
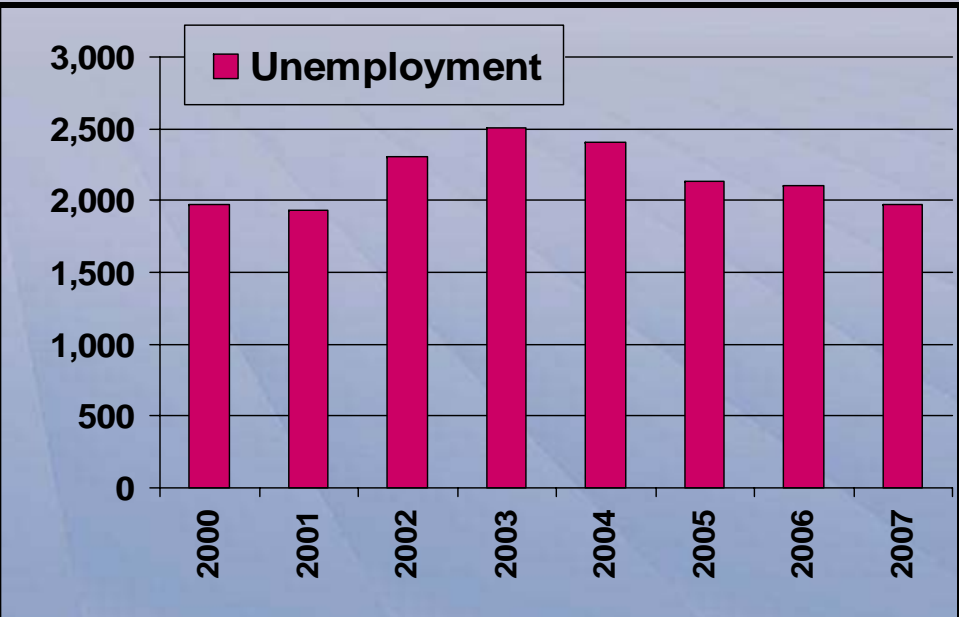
Unemployment Rate



Employment



Annual Monthly Average Unemployment Statistics



Who Works, and Where?

Commute to Work - Census 2000

	Homer	Kenai	Seldovia	Seward	Soldotna	KPB
Labor Force (% of Over 16)	67.3	66.0	61.8	53.6	<u>69.3</u>	62.8
Work at Home - %	8.7	1.9	<u>15.8</u>	5.9	4.6	5.5
Average Time to Work (minutes)	17.9	<u>21.1</u>	15.5	9.9	18.8	25.6

Work Activity

Occupation

Percent of Employed Persons – Census 2000

	Homer	Kenai	Seldovia	Seward	Soldotna	KPB
Management Occupations	<u>33.2</u>	24.1	<u>35.7</u>	<u>28.0</u>	24.9	<u>27.4</u>
Service Occupations	18.6	18.9	14.7	<u>28.0</u>	19.7	17.0
Sales/Office Occupations	22.2	<u>26.0</u>	20.2	25.1	<u>28.3</u>	23.3
Farming, Fishing & Forestry	3.1	0.2	10.9	2.8	0.6	2.4
Construction, Extraction & Maintenance	9.6	14.2	8.5	8.2	15.6	16.7
Production and Transportation	13.3	16.7	10.1	8.0	10.9	13.2

Employment by Line of Business

Census 2000 – by Percent of Total Labor Force

	Homer	Kenai	Seldovia	Seward	Soldotna	KPB
Agriculture/Forestry/Hunting/Fishing	6.5	11.4	<u>14.0</u>	5.4	7.6	10.6
Construction	6.6	7.9	11.6	3.5	4.9	9.3
Manufacturing	3.1	5.6	6.2	3.2	3.4	5.1
Wholesale	1.6	2.2	0	2.5	1.7	1.9
Retail	11.2	<u>16.1</u>	10.9	11.0	17.5	12.6
Transportation/Warehousing/ Utility	9.7	6.2	10.1	6.6	5.9	6.5
Information	2.0	2.2	0	2.1	0.7	1.4
Finance/Ins/Real Estate	5.4	2.4	3.9	3.0	5.0	3.1
Professional/Scientific/Management/ Administration/Waste Management	4.7	4.8	5.4	5.6	3.4	5.1
Education/Health & Social Services	<u>23.3</u>	16.0	11.6	<u>20.7</u>	<u>20.4</u>	<u>19.6</u>
Arts/Entertainment/Recreation/ Accommodation & Food Services	14.5	9.7	10.1	17.2	15.9	10.8
Other Services	6.2	5.5	7.8	4.6	6.7	6.3
Public Administration	5.1	10.1	8.5	14.4	6.9	7.5

Source – U.S. Census Bureau

KPB Top Employers - 2006

Rank	Name of Business, Organization	Location	Business Activity	# Employees
1	<u>Kenai Pen Borough School District</u>	Soldotna	Public education	1,307
2	<u>State of Alaska, excludes University</u>	KPB	State government	948
3	<u>Central Peninsula General Hospital</u>	Soldotna	Local government, hospital	474
4	<u>U.S. Government</u>	KPB	Federal government	428
5	Safeway/Eagle Stores	KPB	Grocery	401
6	<u>Kenai Peninsula Borough</u>	Soldotna	Local government	387
7	Frontier Community Services	Soldotna	Janitorial services	304
8	<u>South Peninsula Hospital</u>	<u>Homer</u>	Local government, hospital	261
9	Alaska Petroleum Contractors	North Kenai	Oilfield services	255
10	Fred Meyer	Soldotna	Gen Merchandise	236
11	Peak Oilfield Services	North Kenai	Oilfield services	228
12	<u>University of Alaska</u> _– includes student employment	KPB	State government, university	210
13	Tesoro Alaska Petroleum Company	North Kenai	Refinery	181
14	Agrium U.S., Inc	North Kenai	Petrochemical manufacturing	162
15	Union of California	Kenai	Oil/gas extract	156

Source – Alaska Department of Labor & Workforce Development

Top Employers by City – Homer - 2006

Rank	Name of Business/Agency	# Employees
1	<u>KPB School District</u>	313
2	<u>South Peninsula Hospital</u>	261
3	South Peninsula Behavioral Health Services	148
4	<u>City of Homer</u>	118
5	Safeway/Eagle Stores	98
6	<u>State of AK, excludes University</u>	97
7	Land End Resort	85
8	<u>Federal Government</u>	69
9	Homer Electric Association	66
10	Chugach Electric	64

Top Employers by City – Kenai - 2006

Rank	Name of Business/Agency	# Employees
1	<u>State of AK, excludes University</u>	291
2	<u>Kenai Peninsula Borough School District</u>	236
3	Peak Oilfield Services	228
4	<u>Federal Government</u>	222
5	Tesoro Alaska Petroleum Company	181
6	Agrium	162
7	Union Oil Company of California	134
8	Home Depot	122
9	<u>City of Kenai</u>	118
10	Safeway	110

Top Employers by City – Seldovia - 2006

Rank	Name of Business/Agency	# Employees
1	<u>Seldovia Village Tribe</u>	58
2	<u>Kenai Peninsula Borough School District</u>	16
3	<u>City of Seldovia</u>	14
4	Main Street Market	10
5	Miller and Linwood	6
6	Hopkins Brothers Construction	6
7	<u>Seldovia Native Association</u>	6
8	Kenai Peninsula Boys and Girls Club	5
9	Seldovia Fuel and Lube	5
10	Tidepool Cafe	4

Top Employers by City – Seward - 2006

Rank	Name of Business/Agency	# Employees
1	<u>State of AK, excludes University</u>	339
2	Seward Assoc for Advance Mariners (SeaLife)	143
3	<u>City of Seward</u>	112
4	Providence Alaska	112
5	Icicle Seafoods	103
6	Safeway	85
7	<u>Kenai Peninsula Borough School District</u>	96
8	CIRI Alaska Tourism	94
9	Ocean Beauty	89
10	<u>Federal Government</u>	58

Top Employers by City – Soldotna - 2006

Rank	Name of Business/Agency	# Employees
1	<u>Kenai Peninsula Borough School District</u>	607
2	<u>Central Peninsula General Hospital</u>	474
3	<u>Kenai Peninsula Borough</u>	387
4	Frontier Community Services	304
5	Alaska Petroleum Contractors	255
6	Fred Meyer	236
7	<u>State of AK, excludes University</u>	195
8	<u>University of Alaska – includes students</u>	128
9	Laidlaw Education Services	116
10	Safeway	108

All data presented here is the most recent data available.
Variation from previous reports may be due to updates
as data are constantly being adjusted due to late or
corrected reports, auditing changes, and such.



Contact Information

Jeanne Camp
KPB Economic Analyst
144 North Binkley Street
Soldotna, AK 99669

Phone - 907-714-2336

Fax - 907-714-2386

Email-jcamp@borough.kenai.ak.us

Kenai Peninsula Borough
John J. Williams, Mayor

